



Tools	Notation Key
Scissors	——— Scissors line
Paste, or woodwork glue Mountain fold
Stencil pen, or bodkin	- - - - - Valley fold
Ruler	+ Glue spot
	⊙ Glue the back
	A1, B1 Parts No.

◆ The Assembly instructions are divided into three blocks: A (box mechanism) ,B (kissing dolls' bodies) and C (kissing dolls' heads). Follow the instructions for each block to assemble your kissing dolls.

◆ ★ marks a basic assembly technique that remains the same regardless of the part. Instructions are printed only for the first instance.

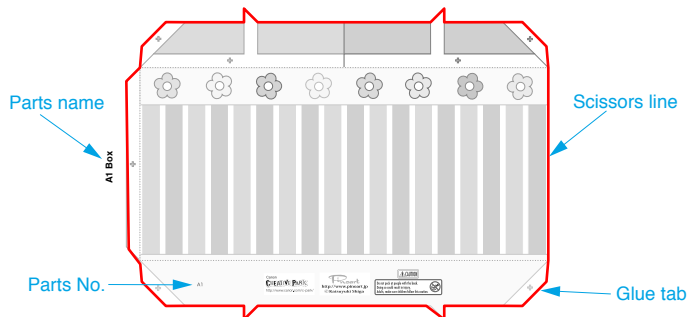
<Caution>

- ※ Keep scissors and glue away from small children.
- ※ Be careful not to cut your fingers when using scissors.

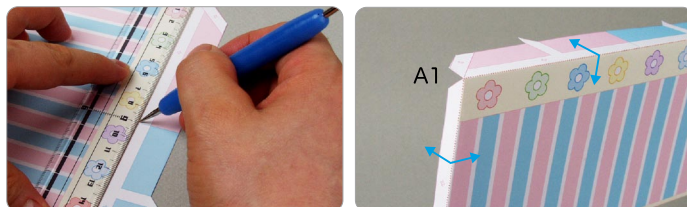
A Assemble the box mechanism

Use pattern: Page2 to Page7.

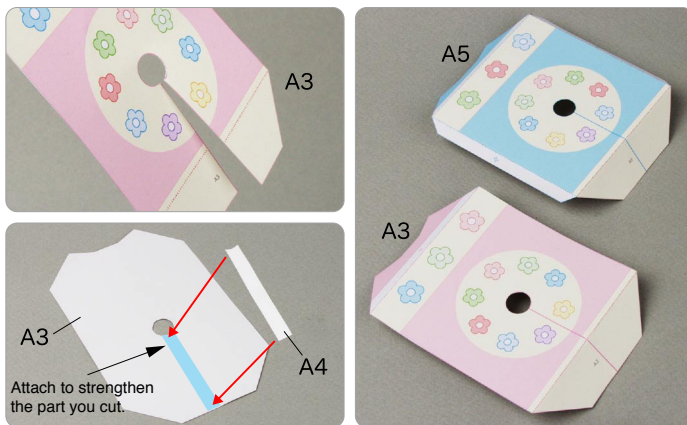
- ① Cut out A1 by cutting along the lines.
- ★ Cut along the line marked ———.



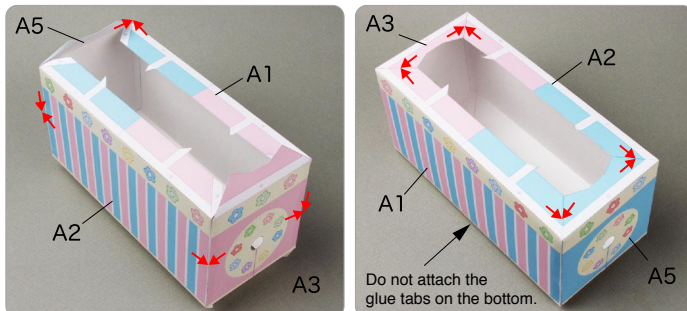
- ② Make a mountain fold on A1.
- ★ Trace along the mountain fold line with a pencil, scoring it to make it easier to fold.



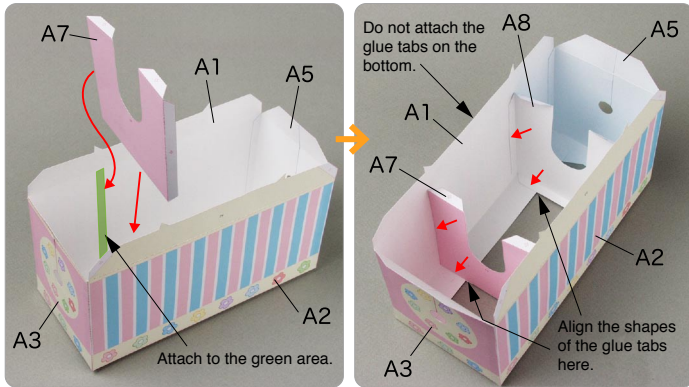
- ③ Cut out the hole in A3, and attach A4. In the same way, attach A5 and A6.
- ★ Using the photo as a guide, attach in the direction of the arrow.



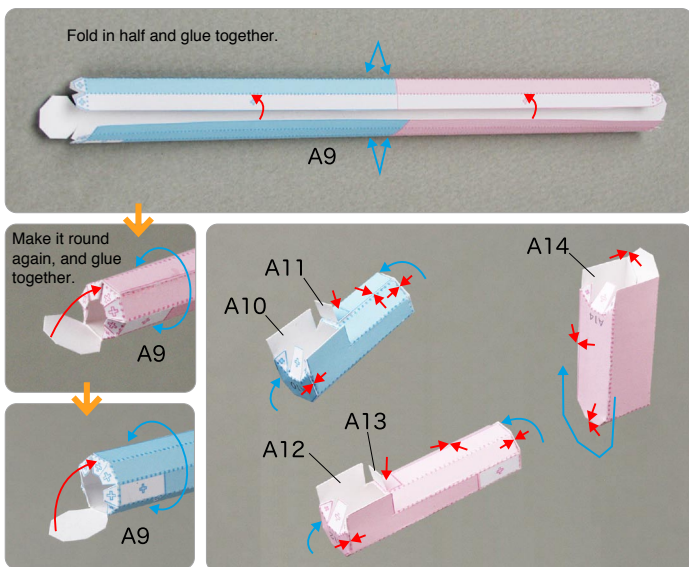
- ④ Attach A1, A2, A3 and A5 together, but do not glue the glue tabs on the bottom yet.



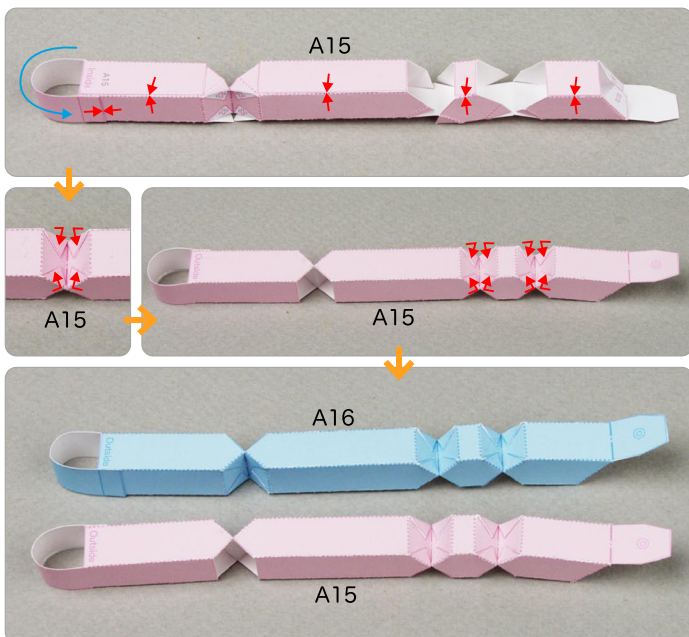
⑤ Attach A7 and A8 to the box.



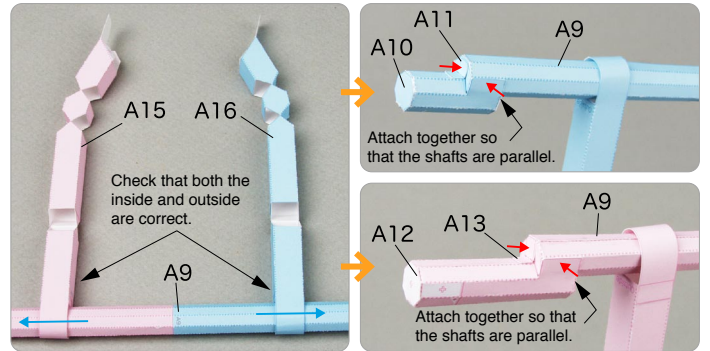
⑥ Assemble A9 to A14.



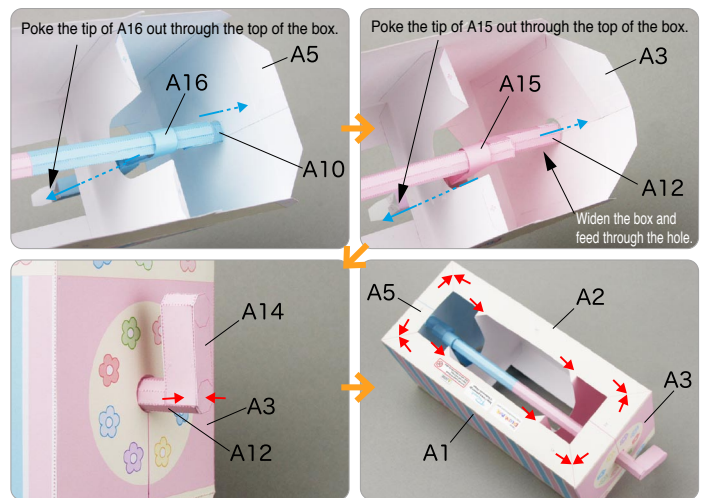
⑦ Assemble A15 and A16.



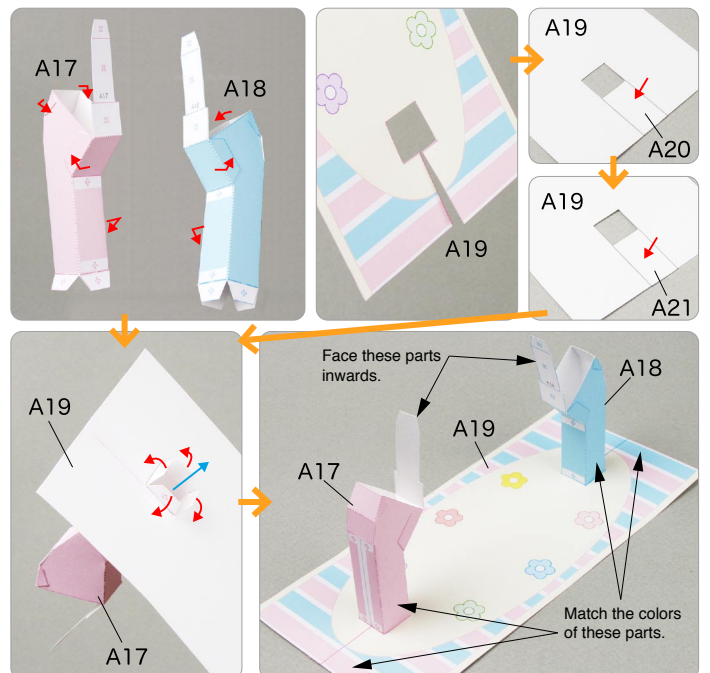
⑧ Insert A9 through A15 and A16, and assemble A10 ~ A13.



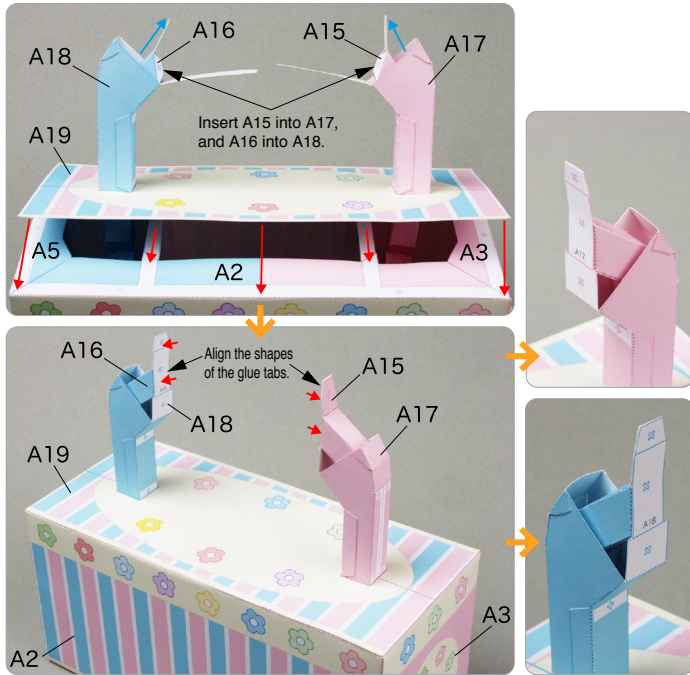
⑨ Insert A9 through the box, and assemble A14. Attach the parts for the bottom of the box.



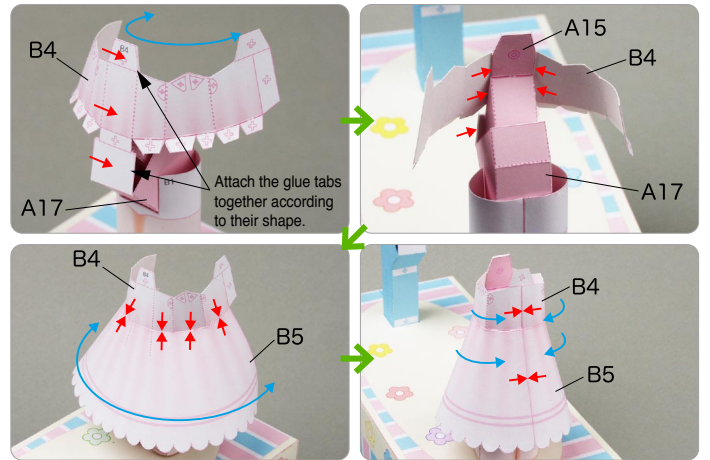
⑩ Assemble A17 and A18, cut out the hole on A19, and attach A20 and A21. Then, attach A17 and A18 to that.



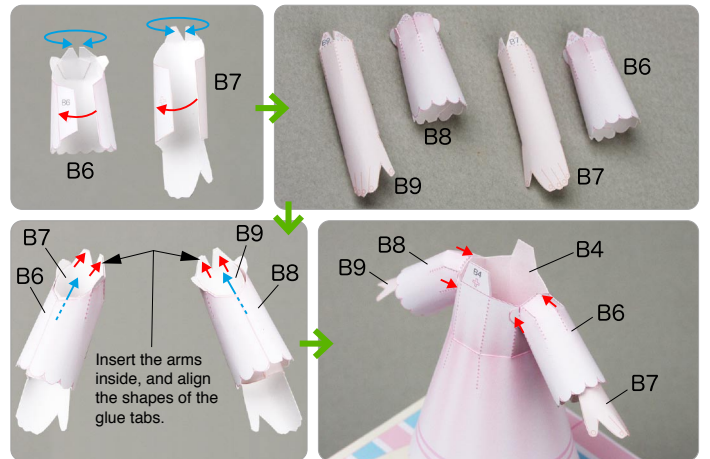
① Attach A19 to the box, and the box mechanism is complete.



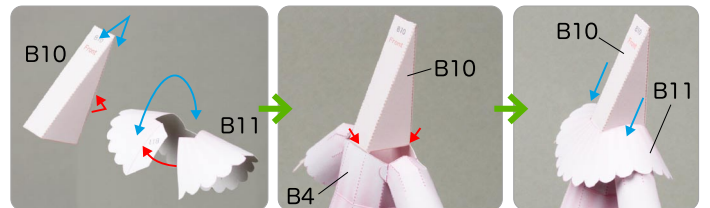
② Attach B4 to A17, and attach B5 to that. Next, assemble B4 and B5.



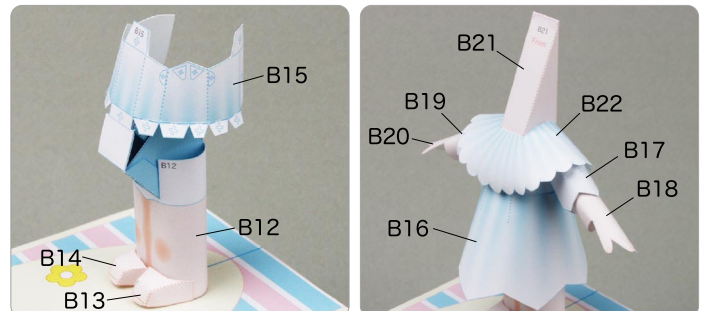
③ Assemble B6 and B7, and attach them together. In the same way, assemble B8 and B9. Next, attach B6 and B8 to B4.



④ Assemble B10 and B11, and attach them to B4.



⑤ In the same way, assemble the body parts B12 ~ B22.



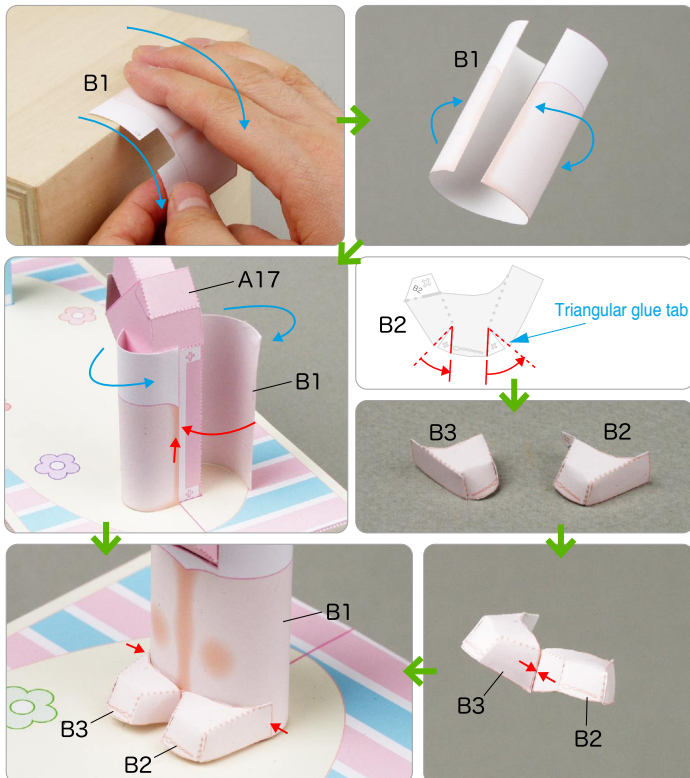
B Make the kissing dolls' bodies

Use pattern: Page 8 / Page 9.

① Attach B1 to A17. Then, attach B2 and B3 to that.

★ Using the photo as a guide, move your fingers in the direction of the arrow, adjusting the pressure to curl the paper.

★ Attach the triangular glue tabs so that the front side becomes convex.

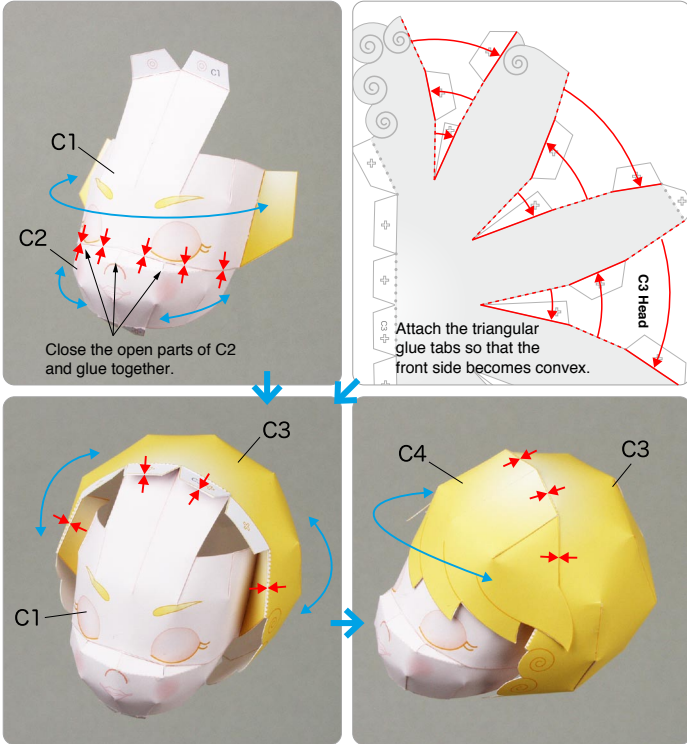


C Make the kissing dolls' heads

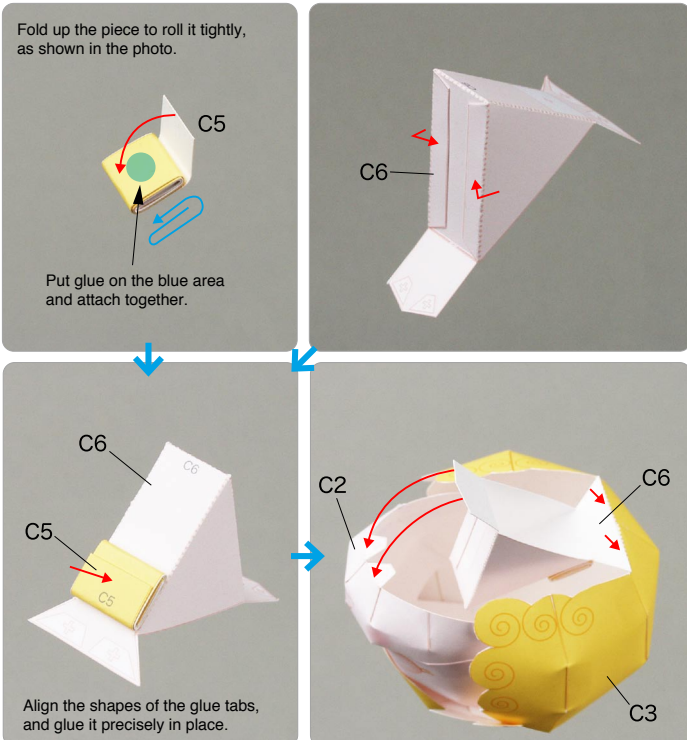
Use pattern: Page10 / Page11.

☆ To prevent the heads from overbalancing, use only a thin layer of glue when assembling.

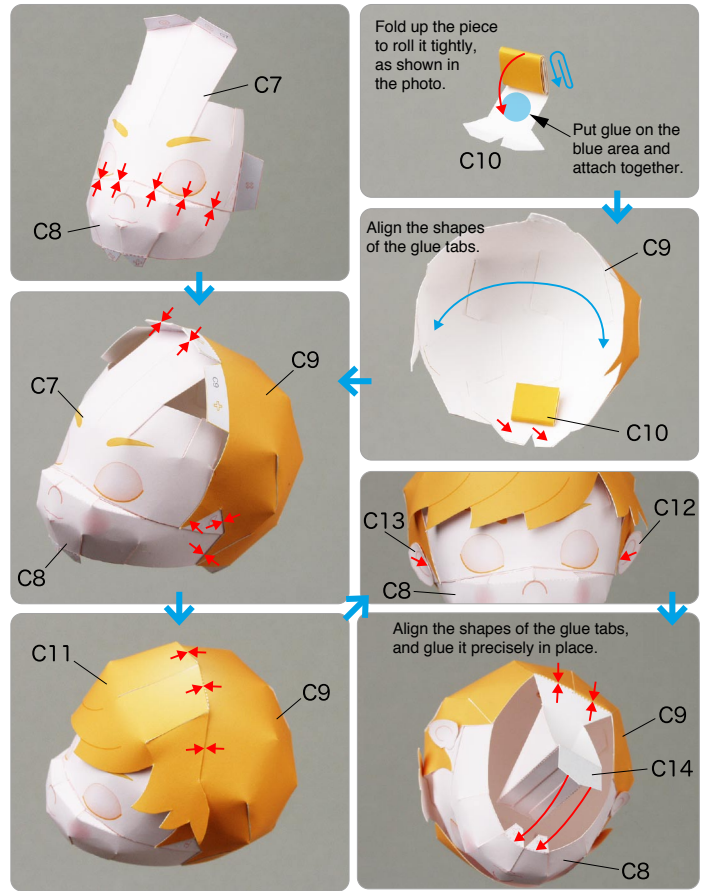
① Attach parts C1 ~ C4.



② Attach C5 to C6, and attach that to the head.



③ In the same way, assemble the parts C7 ~ C13. Next, attach C14 to the head.



④ Place the dolls' heads on their bodies, and your kissing dolls are complete!

