

OTTOBRE design

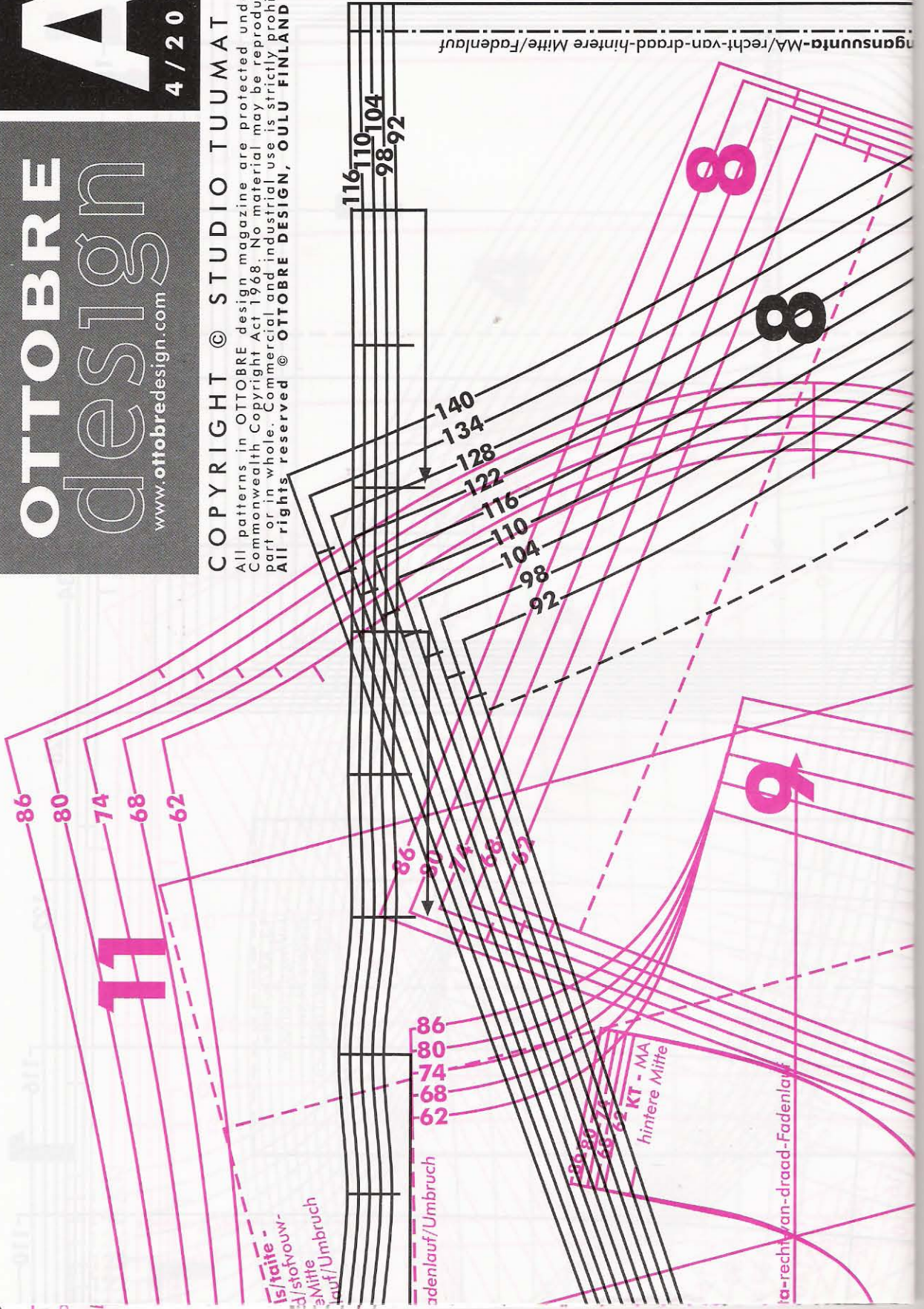
www.ottobredesign.com

A

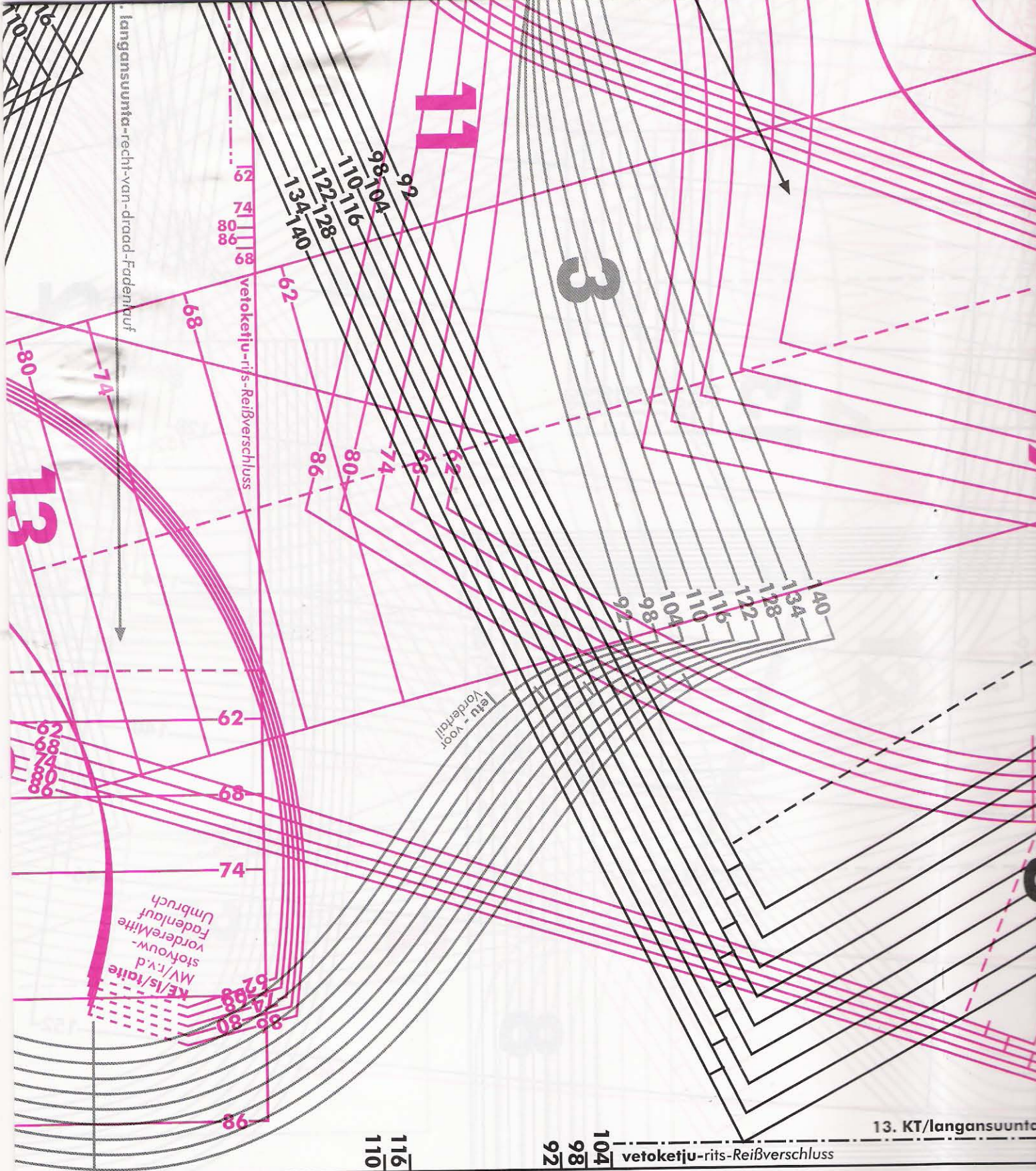
4 / 2000

COPYRIGHT © STUDIO TUUMAT OY

All patterns in OTTOBRE design magazine are protected under the
Commonwealth Copyright Act 1968. No material may be reproduced in
part or in whole. Commercial and industrial use is strictly prohibited.
All rights reserved © OTTOBRE DESIGN, OULU FINLAND 2000



ngansuunta-MA/recht-van-draad-hintere Mitte/Fadenlauf



13. KT/langansuunta

vetoketju-rits-Reißverschluss

116
110

104
98
92

13

4

16

8

12

3

9

9

KT - MA
Innere Mitte

142.68.74.81.80

8. Ier gansuunt
recht-van-draan-Foden auf

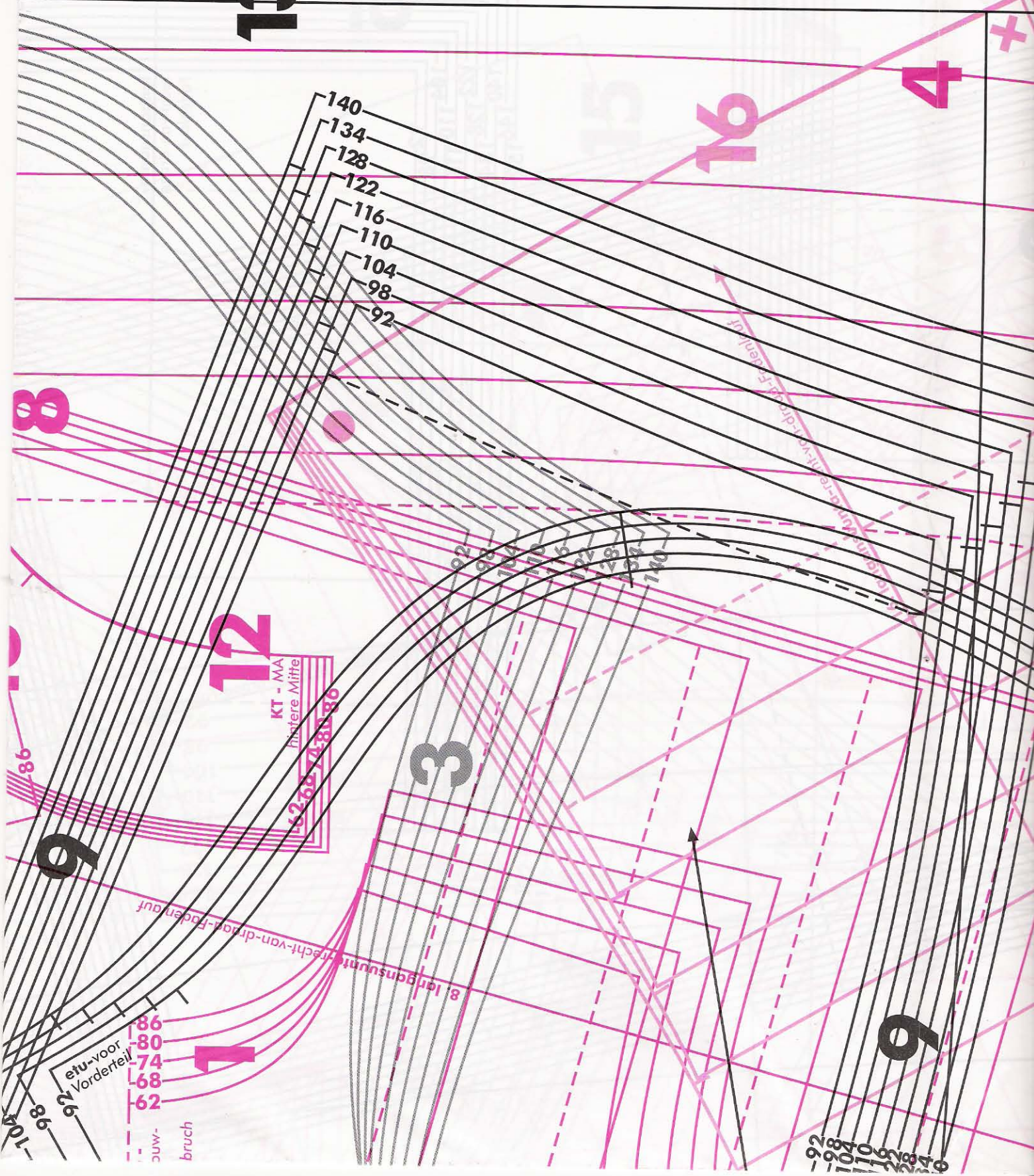
etu-voor
Vorderteil

86
80
74
68
62

uw-
bruch

104
98
92

92
86
80
74
68
62



904
906
908
910
912
914
916
918
920

9

8

14

92
98
104
110
116

86

80

74

68

62

4

+

13

8 11 9

12 13

13 16

uch
140
134
128
122
116
110
104
98
92

116-110-104-98-92
KE/ls/taite
MV/r.v.d/
stofvouw
vordere Mitte
Fadenlauf/
Umbruch

116-110-104-98-92
KT-MA
hintere Mitte

tikkausviiva-stiklijn-stepplinie

13. KE
MV/r.v.
worder
taite

9. KE/langansuunta/taite-M/rech-van-draad/stofvouw-vordere Mitte/F

11. langansuun

15

9

6

86
80
74
68
62

62
68
74
80

92
98
104
110
116
122
128
134
140

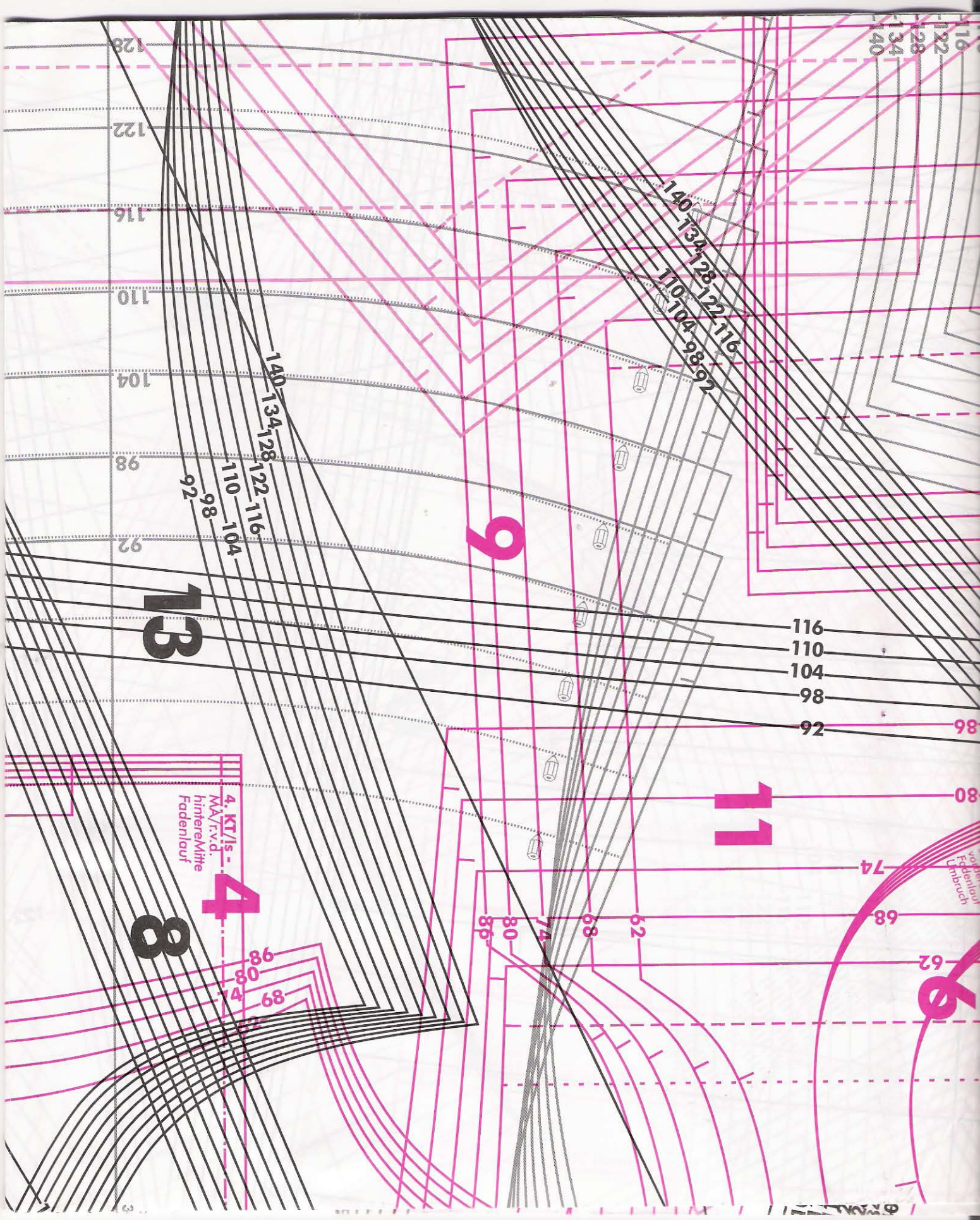
86-80-74
88-82
KE/ls/taite-
MV/r.v.d
stofvouw
vordere Mitte
Fadenlauf
Umbruch

92
98
104
110
116

62
68
74
80
86

11

92



116
122
128
134
140

140-134-128-122-116
110-104-98-92

128
122
116
110
104
98
92
140-134-128-122-116
110-104-98-92

116
110
104
98
92

80
74
68
62

vorheriger Fadenlauf
Umbuch

9

13

11

4

8

6

4. KT/s -
M/v.r.v.d.
hinterer Mitte
Fadenlauf

98
90
84
88
89

86
80
74
68
62

1. r.v.d./ls/taite
vordere Mif
Fadenlauf/Um

14

8

1

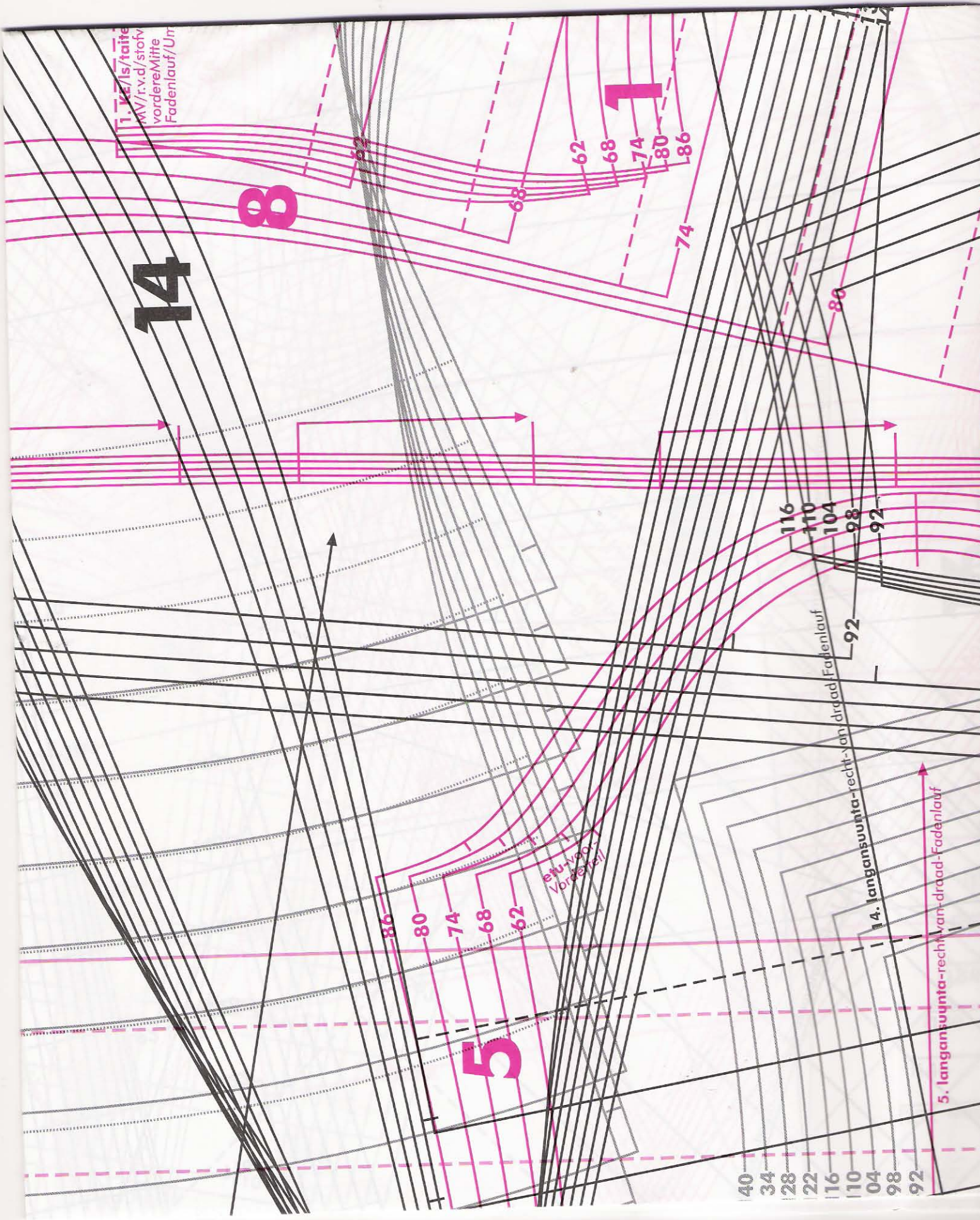
5

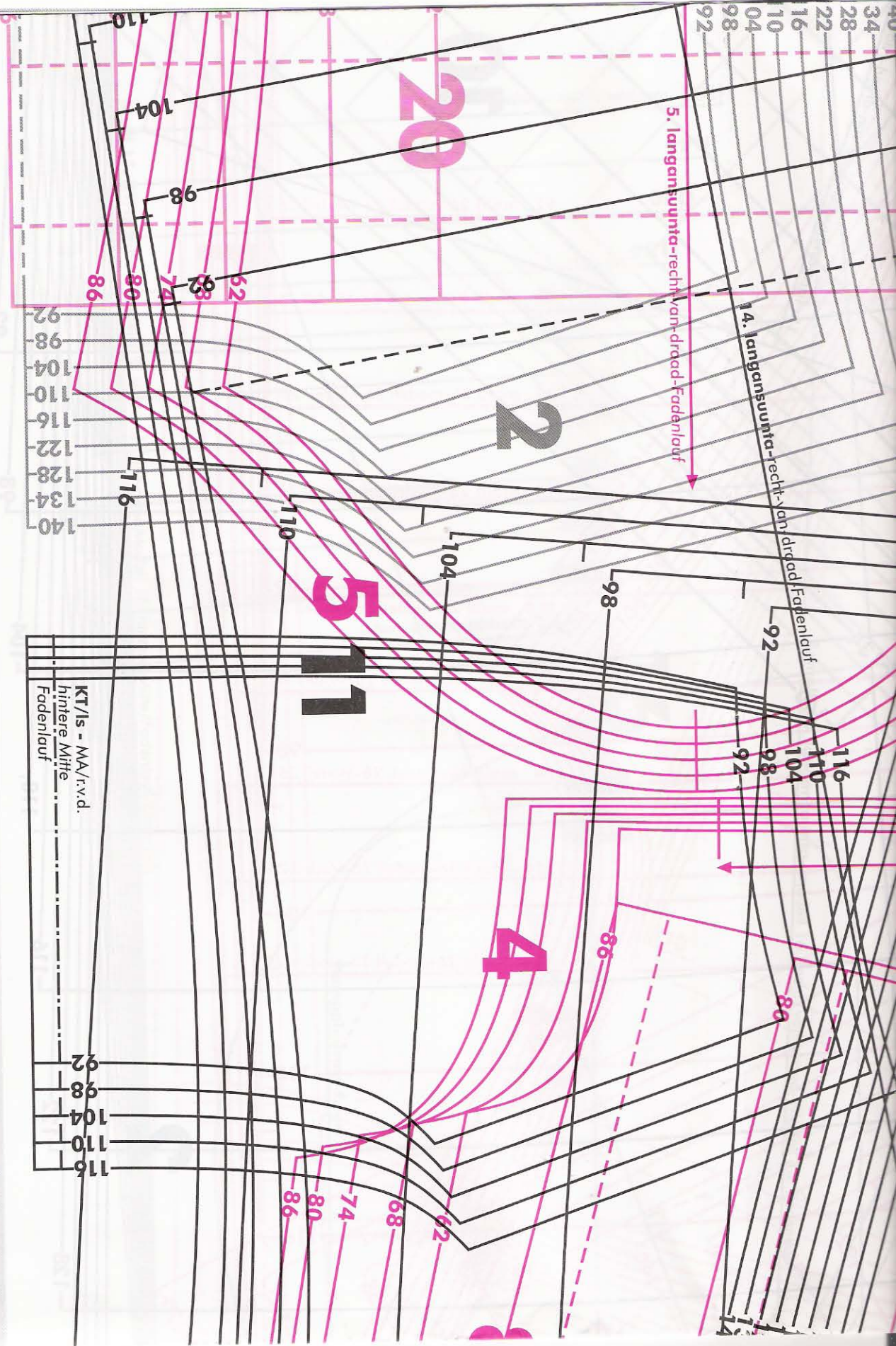
ew-vordere
Vorderteil

14. langansuunta-recht-van draad-Fadenlauf

5. langansuunta-recht-van draad-Fadenlauf

40
34
28
22
16
10
04
98
92





20

2

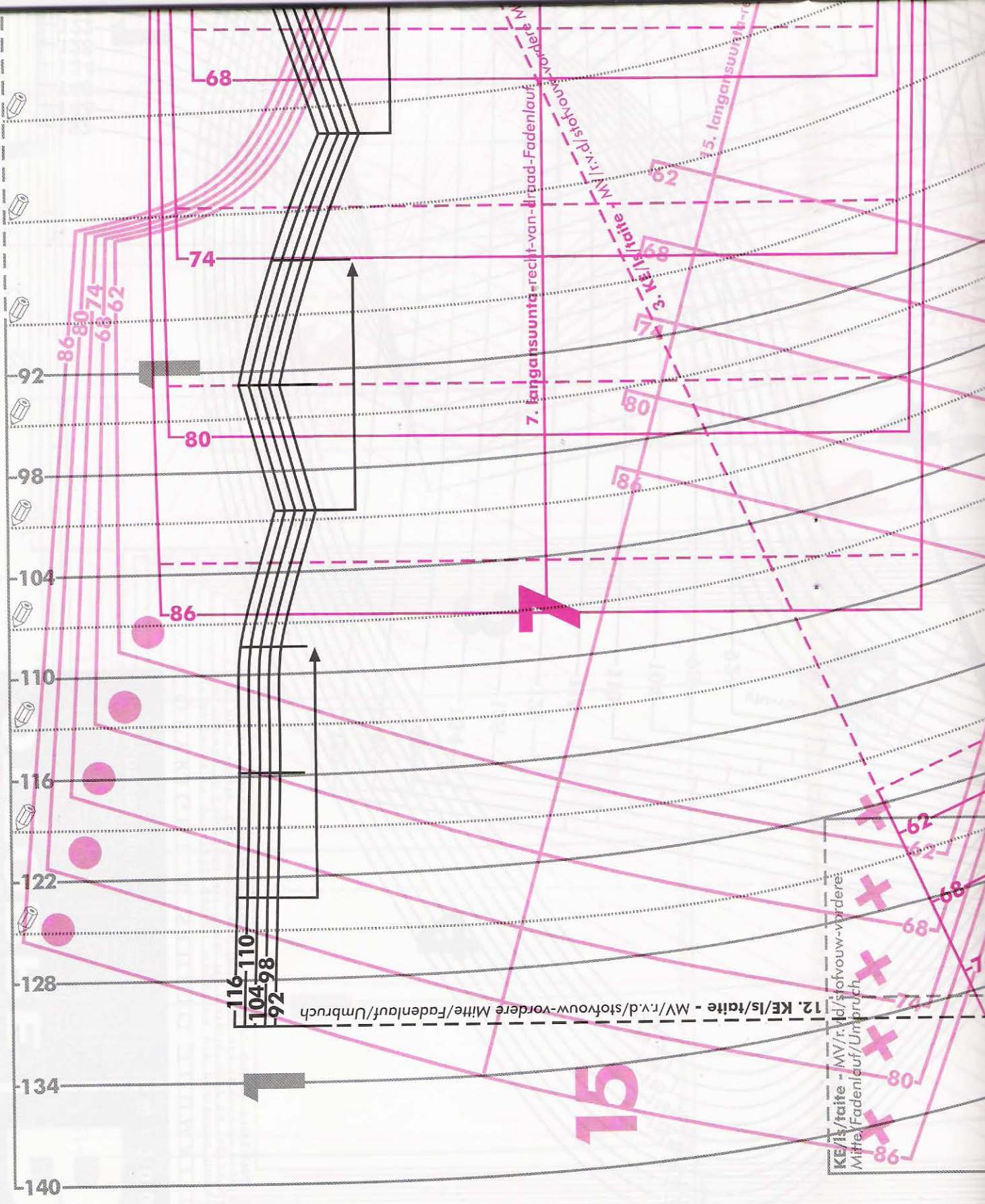
9

11 15

4

6

1



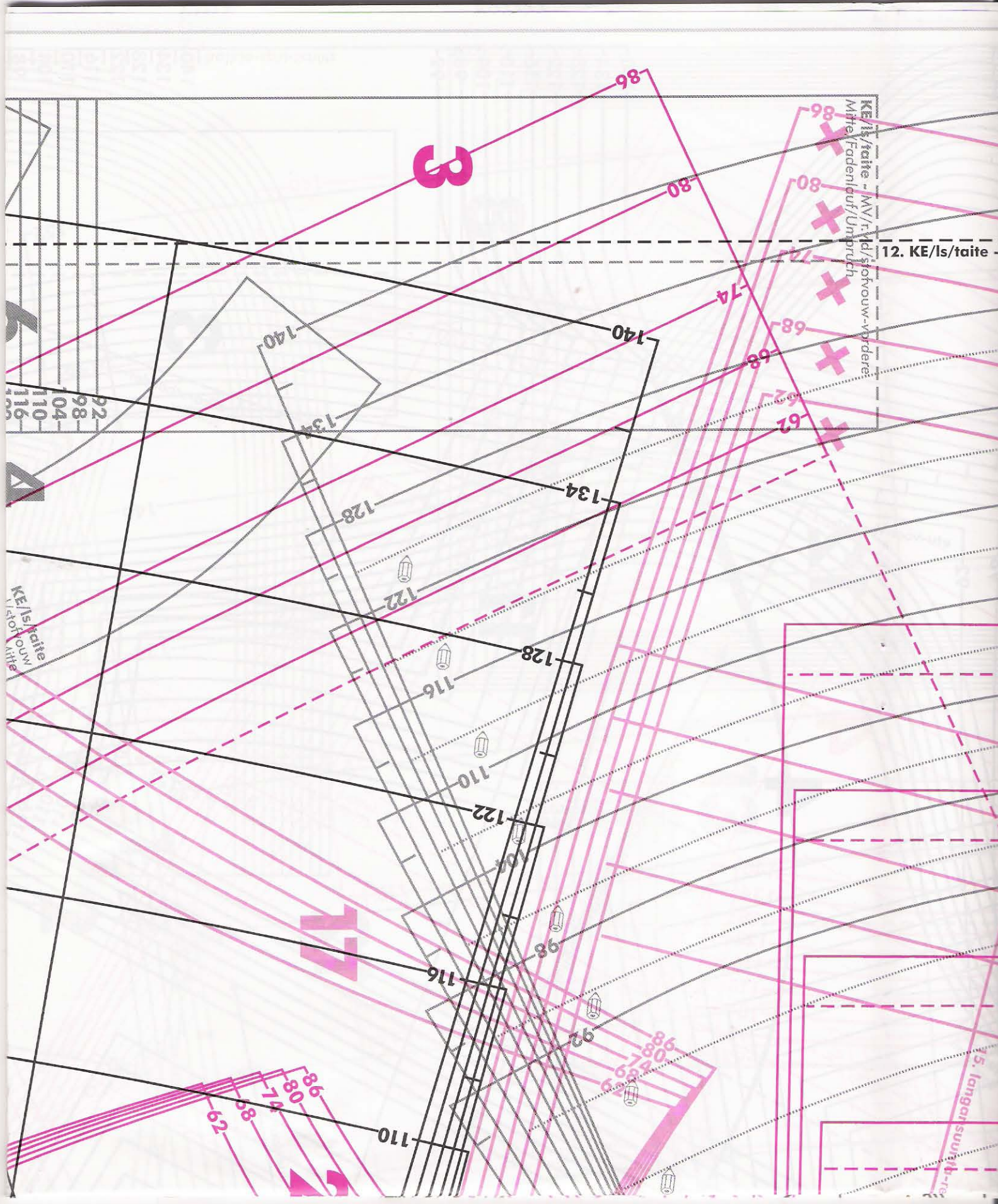
116 110
104 98
92

12. KE/Is/taite - MV/r/d/stofvouw-vordere Mitte/Fadenlauf/Umbruch

KE/Is/taite - MV/r/d/stofvouw-vordere
Mitte/Fadenlauf/Umbruch

15



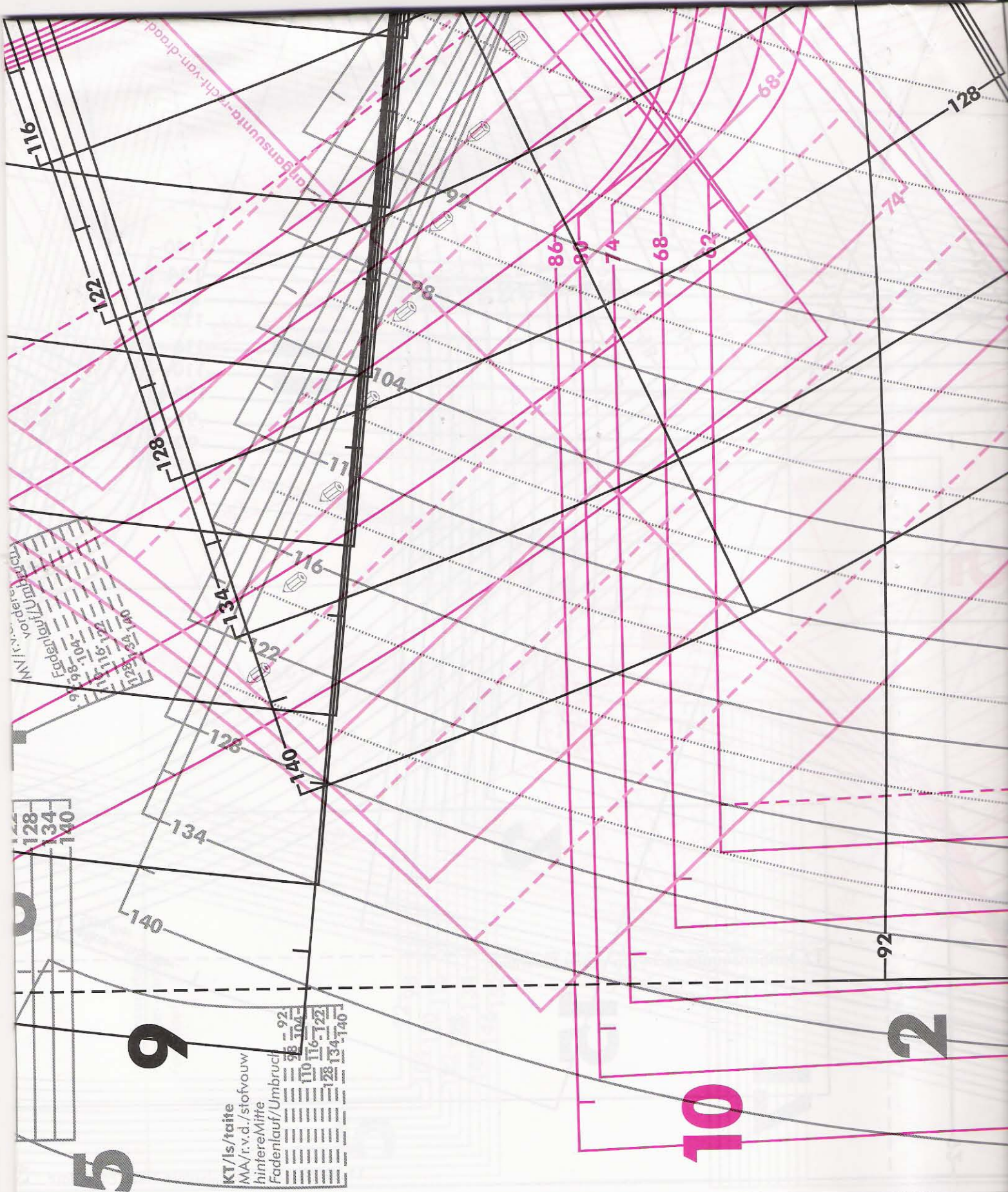


12. KE/ls/taite - MV/rind/stofvow-vordere Mitre Fadenlauf/Umbruch

12. KE/ls/taite -

KE/ls/taite
Mitre Fadenlauf/Umbruch

15. Langansuulh-re



92
 98
 104
 116
 122
 128
 134
 140
 MA/r.v.d./stofvoew
 Fadenlauf/Umbrucf

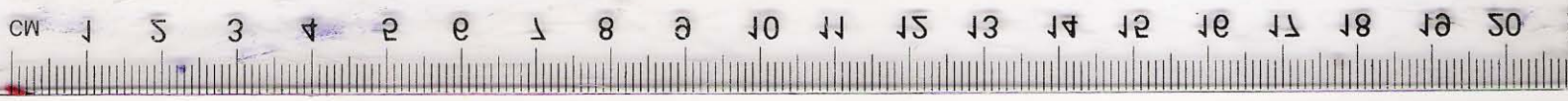
92
 104
 116
 122
 134
 140
 KT/Is/taite
 MA/r.v.d./stofvoew
 hintereMitte
 Fadenlauf/Umbrucf

5

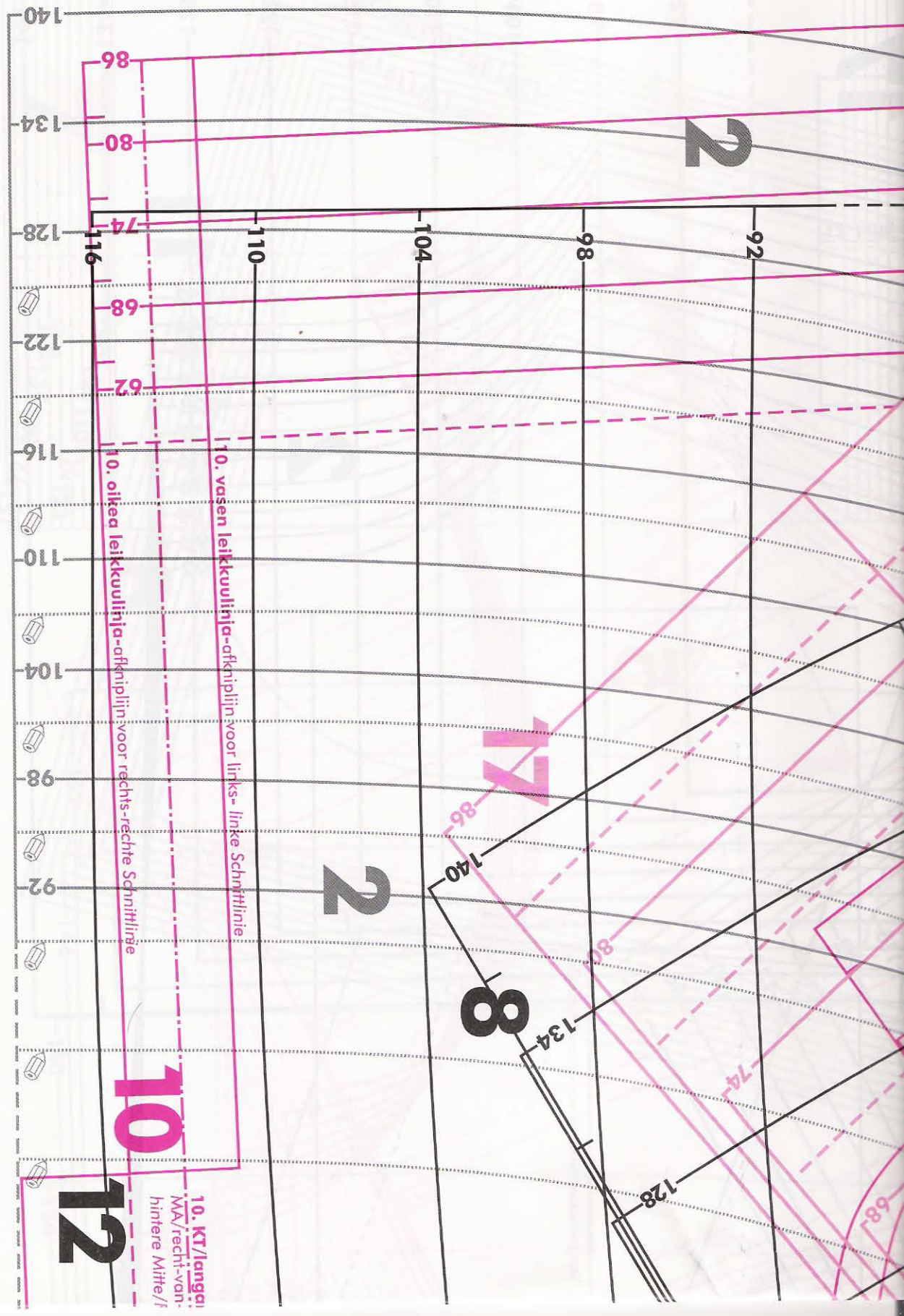
9

10

2



5 15 6 4 17 8 10 12



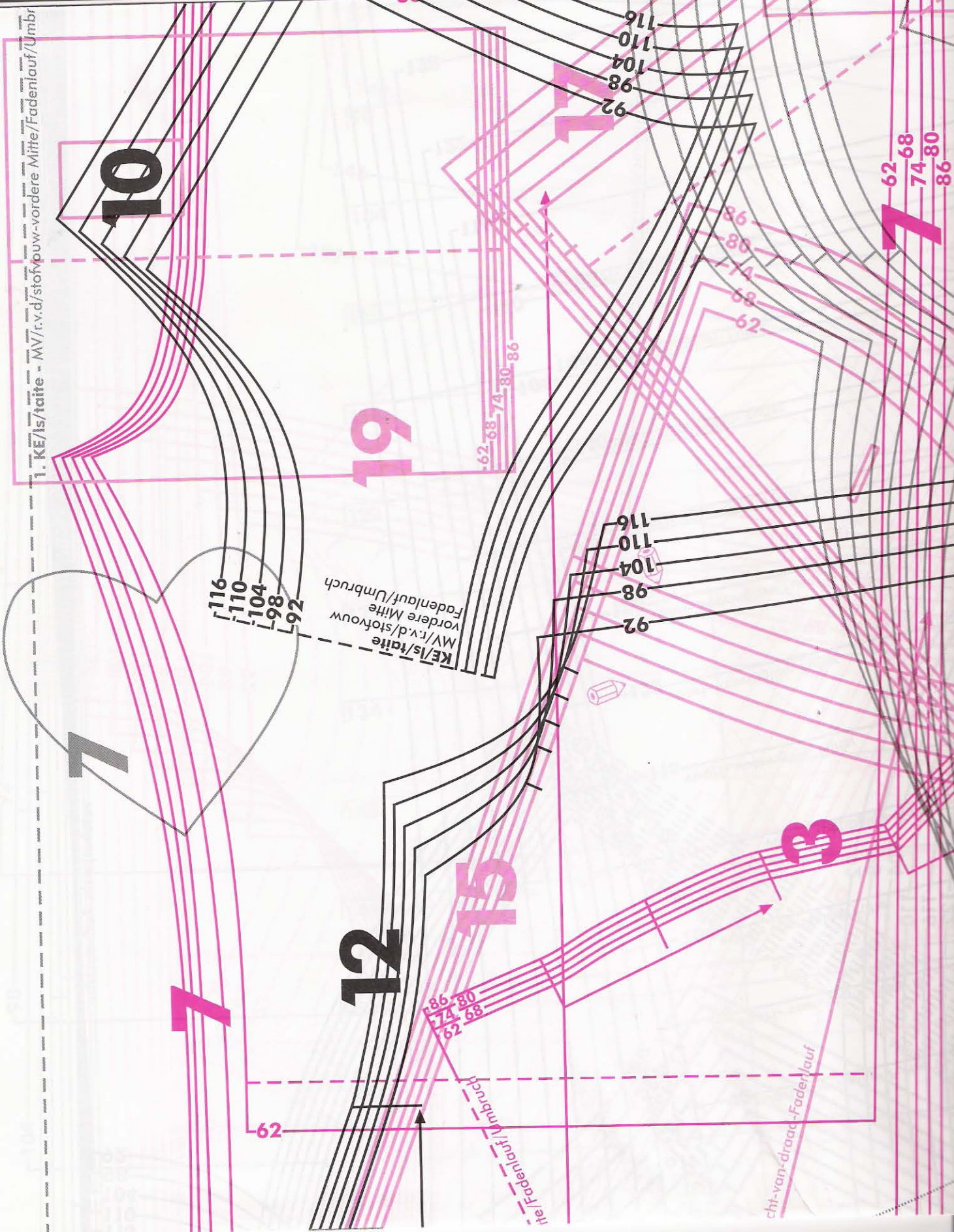
10. vassen leikkuulinja-afknijlijn voor links- linke Schnittlinie

10. oikea leikkuulinja-afknijlijn voor rechts- rechte Schnittlinie

10. KT/laangai
MA/recht-van-
hintere Mitte/f



1. KE/ls/taite - MV/r.v.d./stokpouw-vordere Mitfe/Fadenlauf/Umbr



10

19

7

7

12

15

7

116
110
104
98
92

KE/ls/taite
MV/r.v.d./stokpouw
vordere Mitfe
Fadenlauf/Umbruch

92
98
104
110
116

62
68
74
80
86

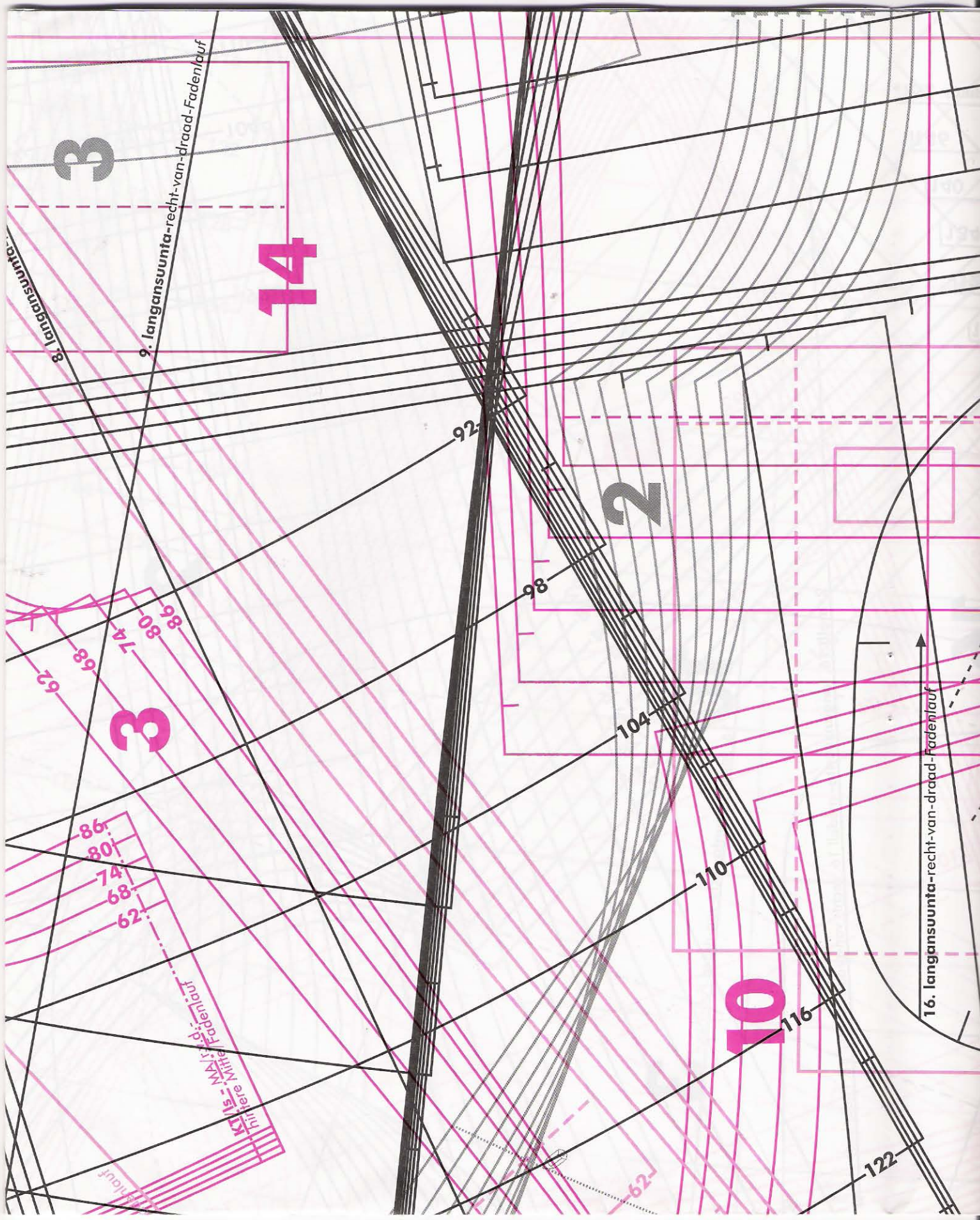
86
80
74
68
62

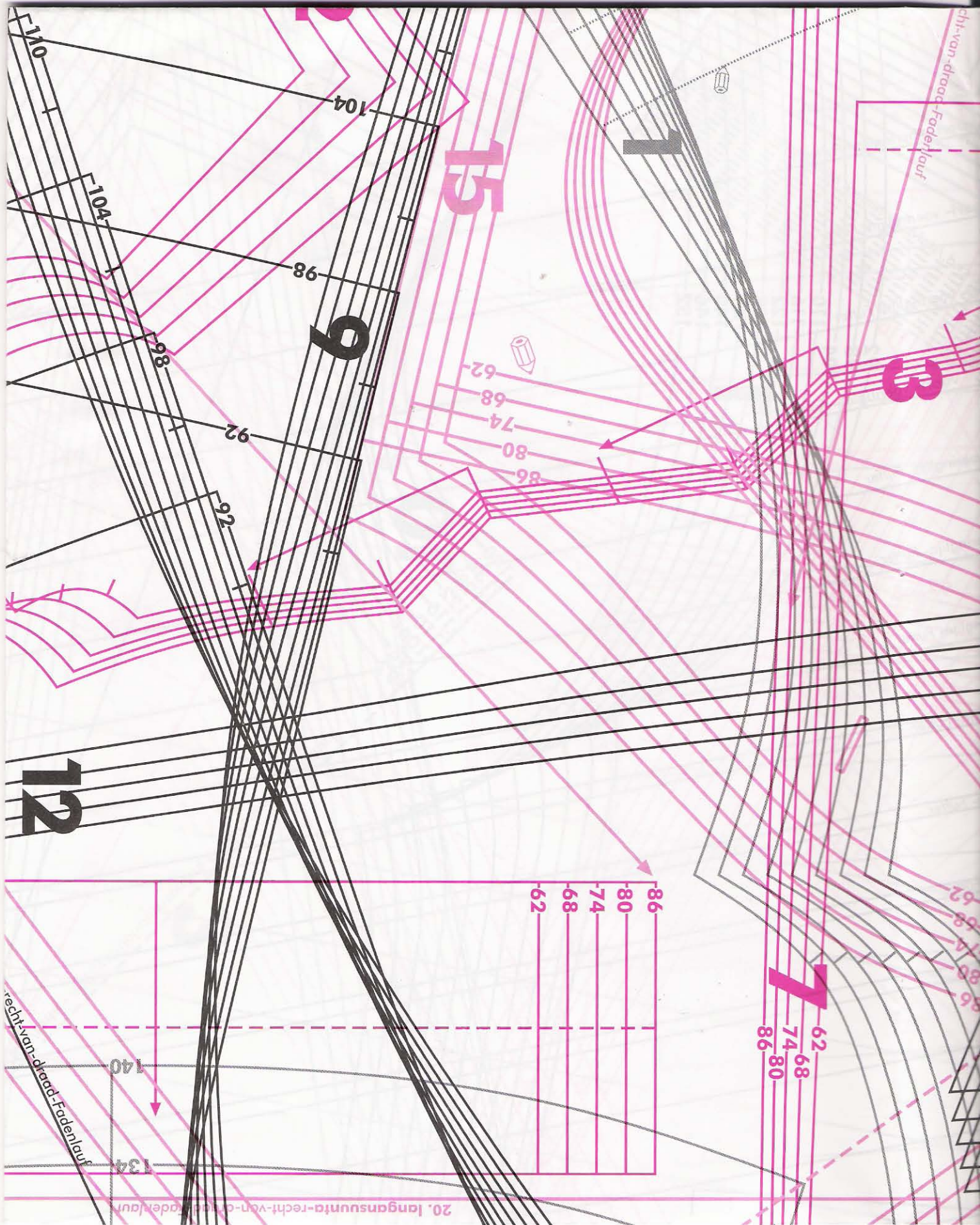
62

Fadenlauf/Umbruch

cht-van-draac-Fadenlauf







110

104

104

98

9

98

92

96

12

86
80
74
68
62

7
62
68
74
80
86

recht-van-draad-Fadenlauf

140

134

20. langansuunta-recht-von-draht-fadenlauf

recht-van-draad-Fadenlauf

3

15

62
68
74
80
86