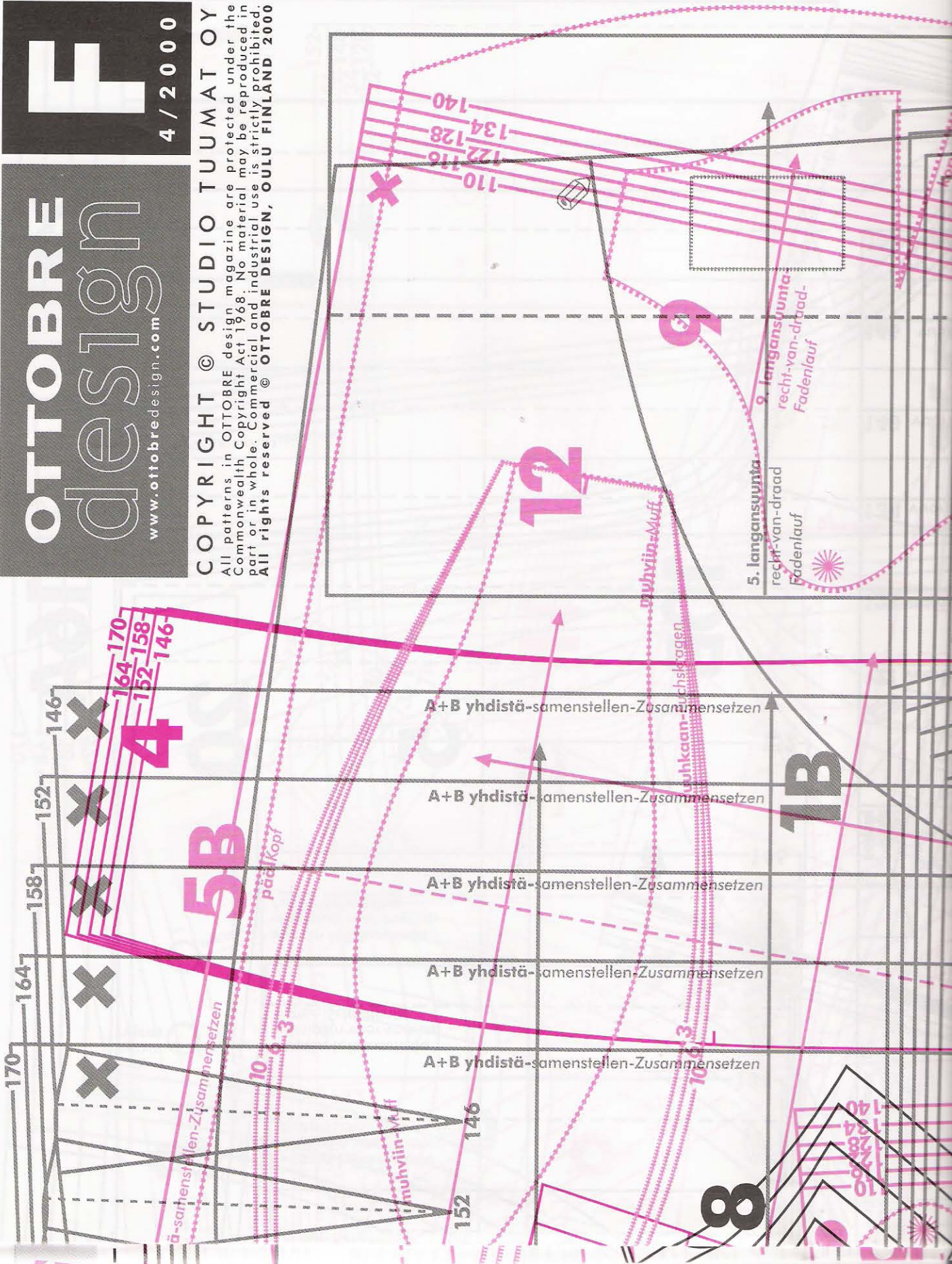
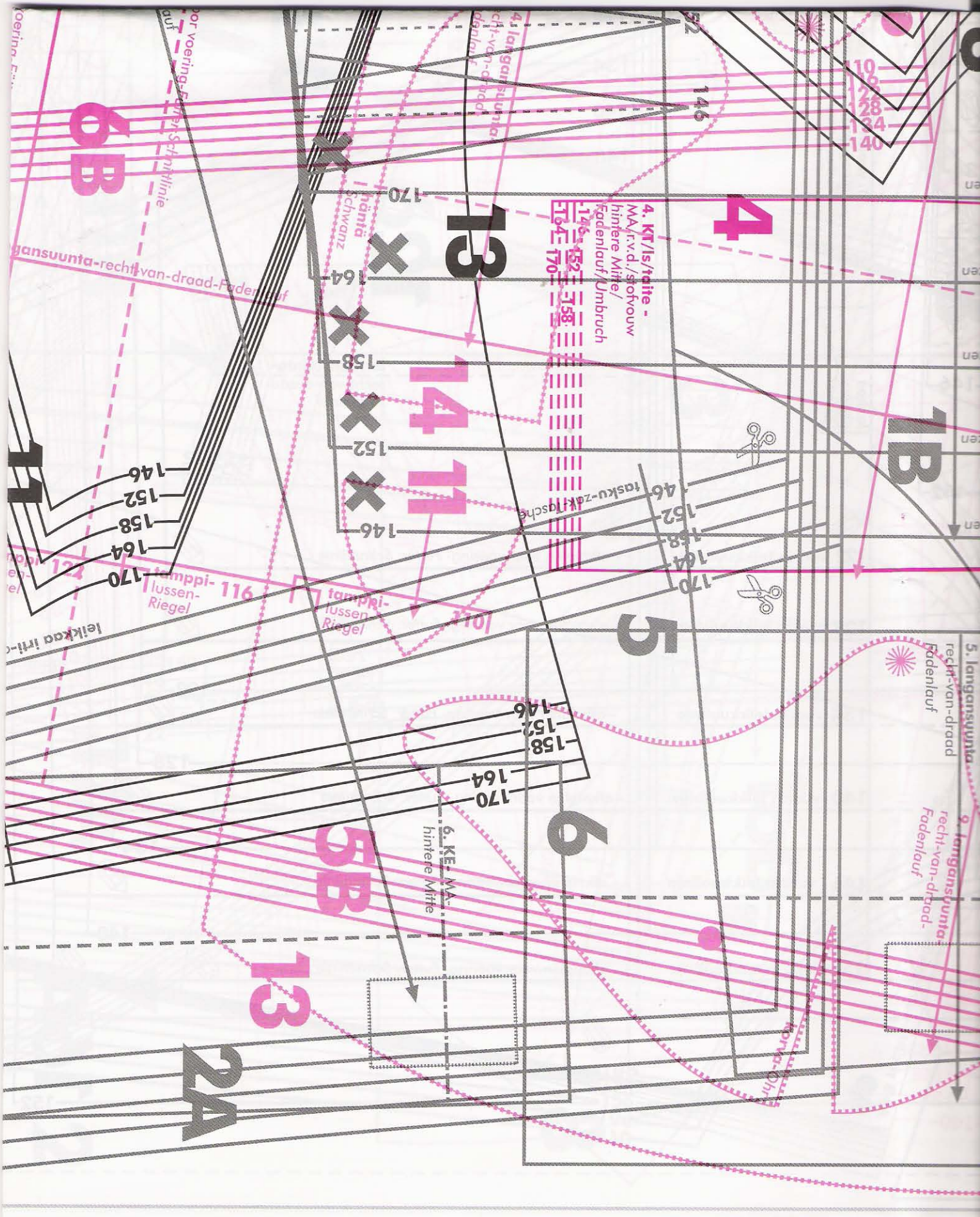
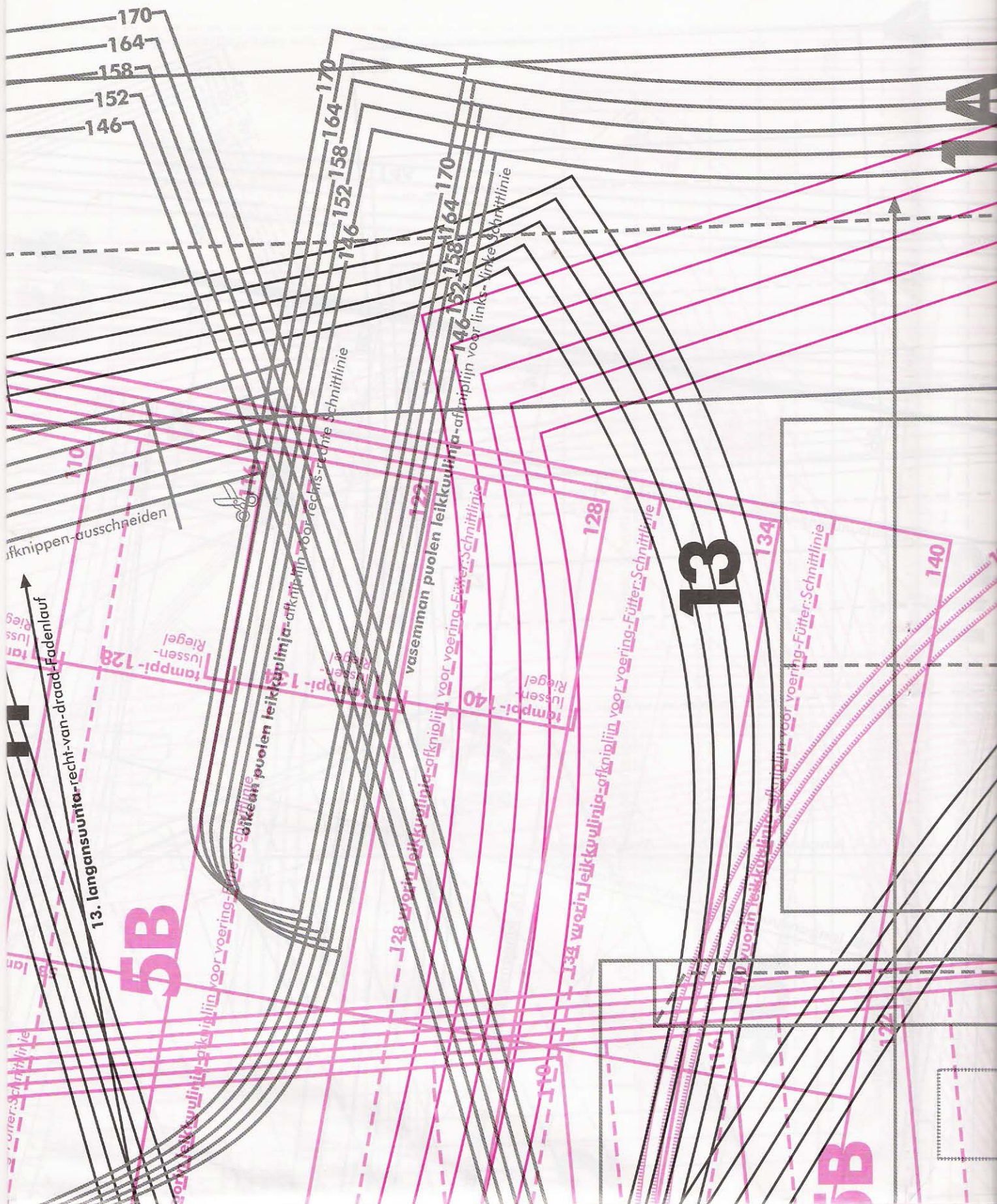


COPYRIGHT © STUDIO TUUMAT OY
All patterns in OTTOBRE design magazine are protected under the Commonwealth Copyright Act 1968. No material may be reproduced in part or in whole. Commercial and industrial use is strictly prohibited. All rights reserved © OTTOBRE DESIGN, OULU FINLAND 2000







170
164
158
152
146

170
164
158
152
146

170
164
158
146

afknippen-ausschneiden

langansuunta-recht-van-draad-Fadenlauf

tamppi-128

5B

13. langansuunta-recht-van-draad-Fadenlauf



afkniplijn voor rechts-ruchte Schnittlinie

122

vasevman puolen leikkuvulinja-afkniplijn voor voering-Eütter-Schnittlinie

tamppi-140

13

128

afkniplijn voor voering-Eütter-Schnittlinie

134

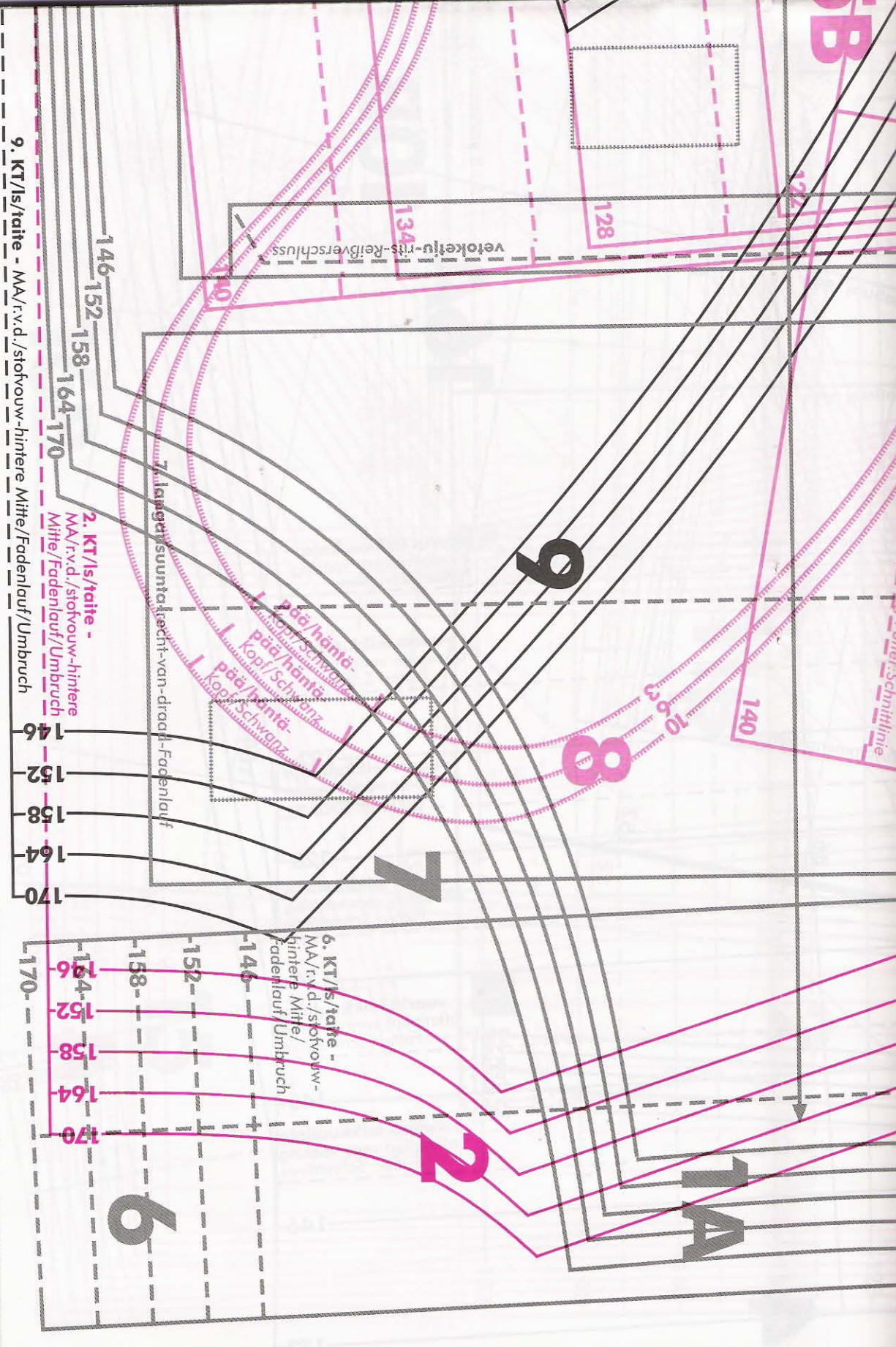
afkniplijn voor voering-Eütter-Schnittlinie

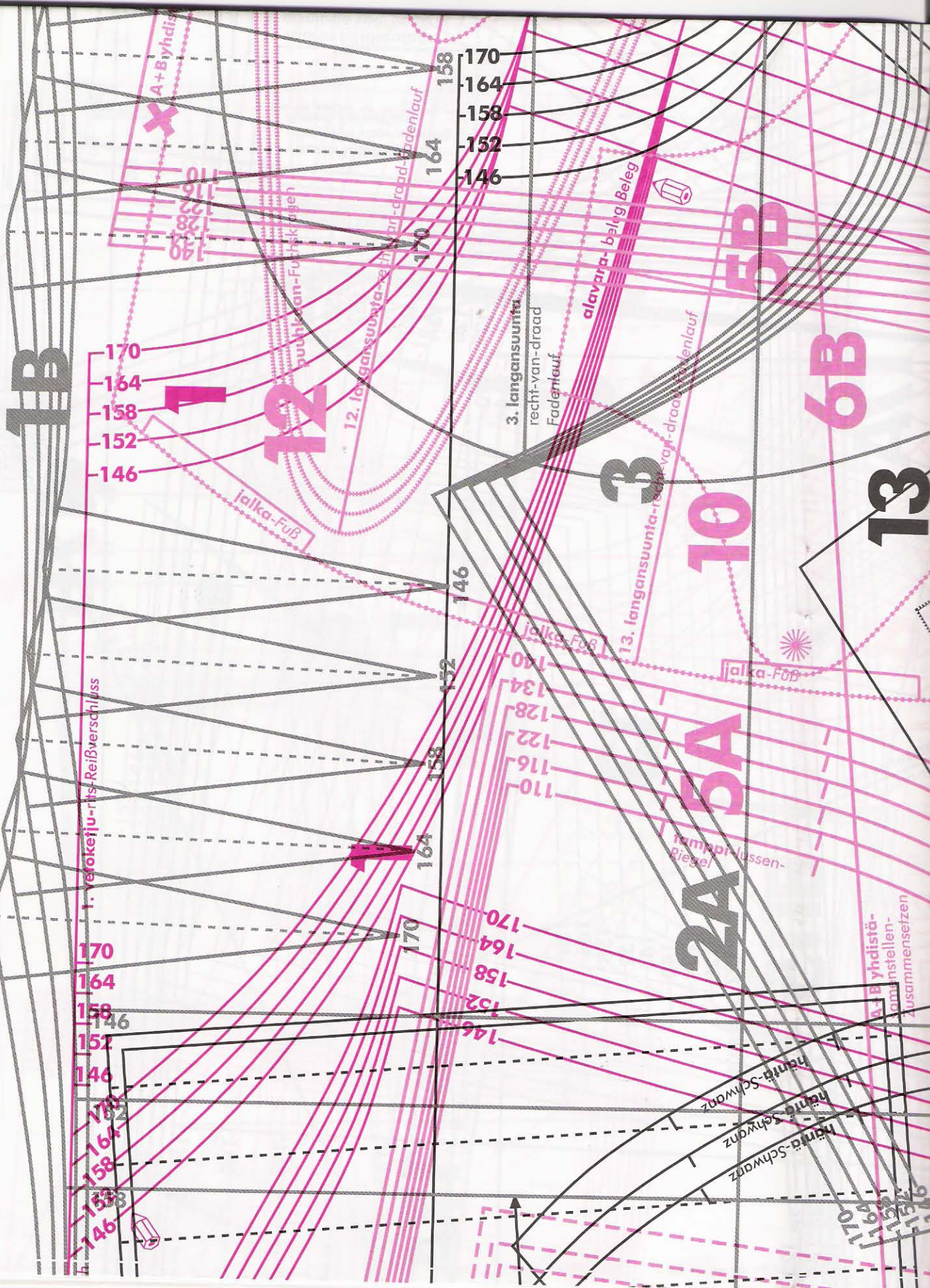
140

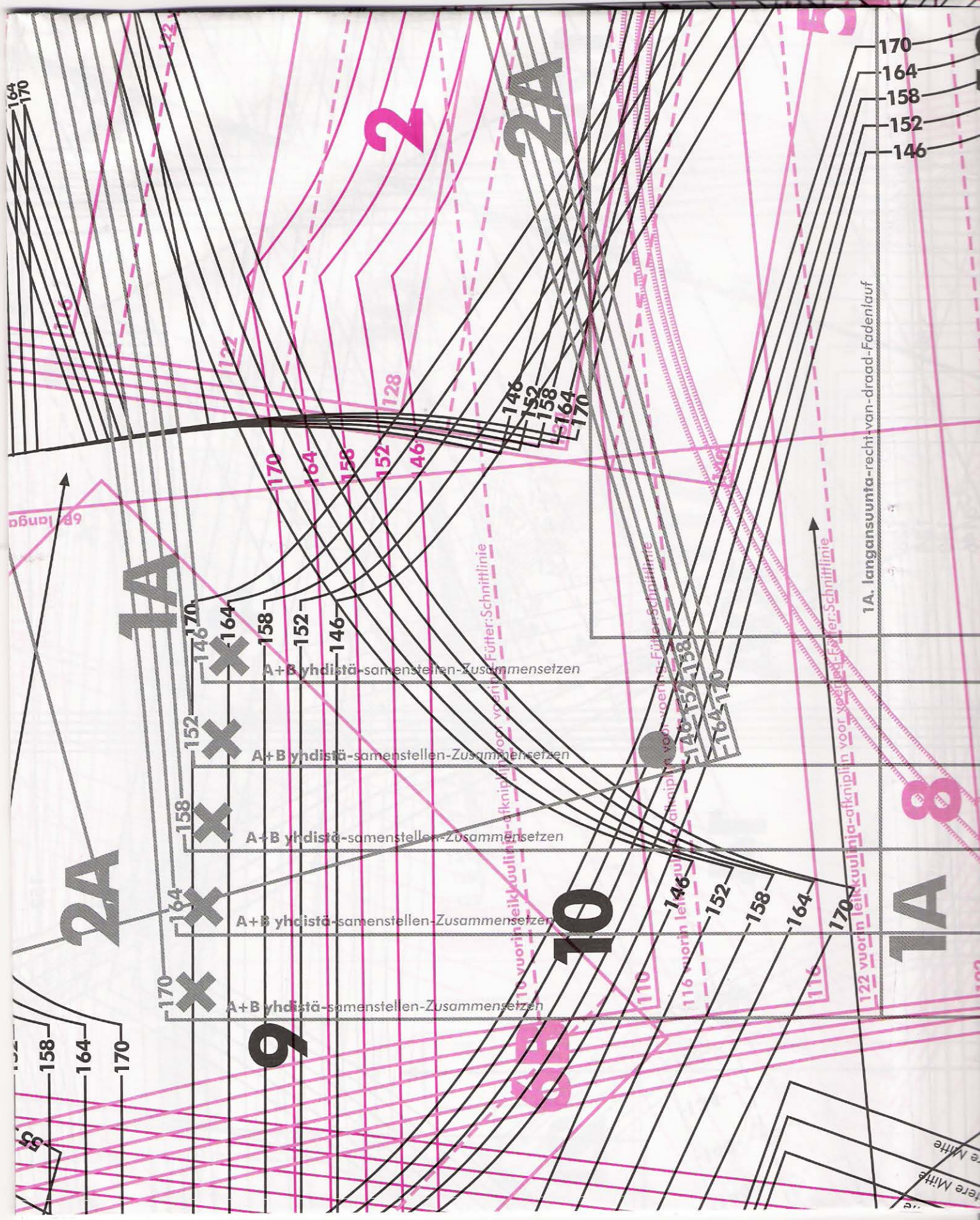
5B

1A

5B 4 149 11 135 8127 9 13 2 6 2A







- 170
- 164
- 158
- 152
- 146

1A. langansuunta-recht-van-draad-Fadenlauf

A+B yhdistä-samenstellen-Zusammensetzen

A+B yhdistä-samenstellen-Zusammensetzen

A+B yhdistä-samenstellen-Zusammensetzen

A+B yhdistä-samenstellen-Zusammensetzen

A+B yhdistä-samenstellen-Zusammensetzen

8

1A

10

9

2A

1A

2A

2

ere Mitte

ere Mitte

6B langa

6B

Fütter-Schnittlinie

Fütter-Schnittlinie

Fütter-Schnittlinie

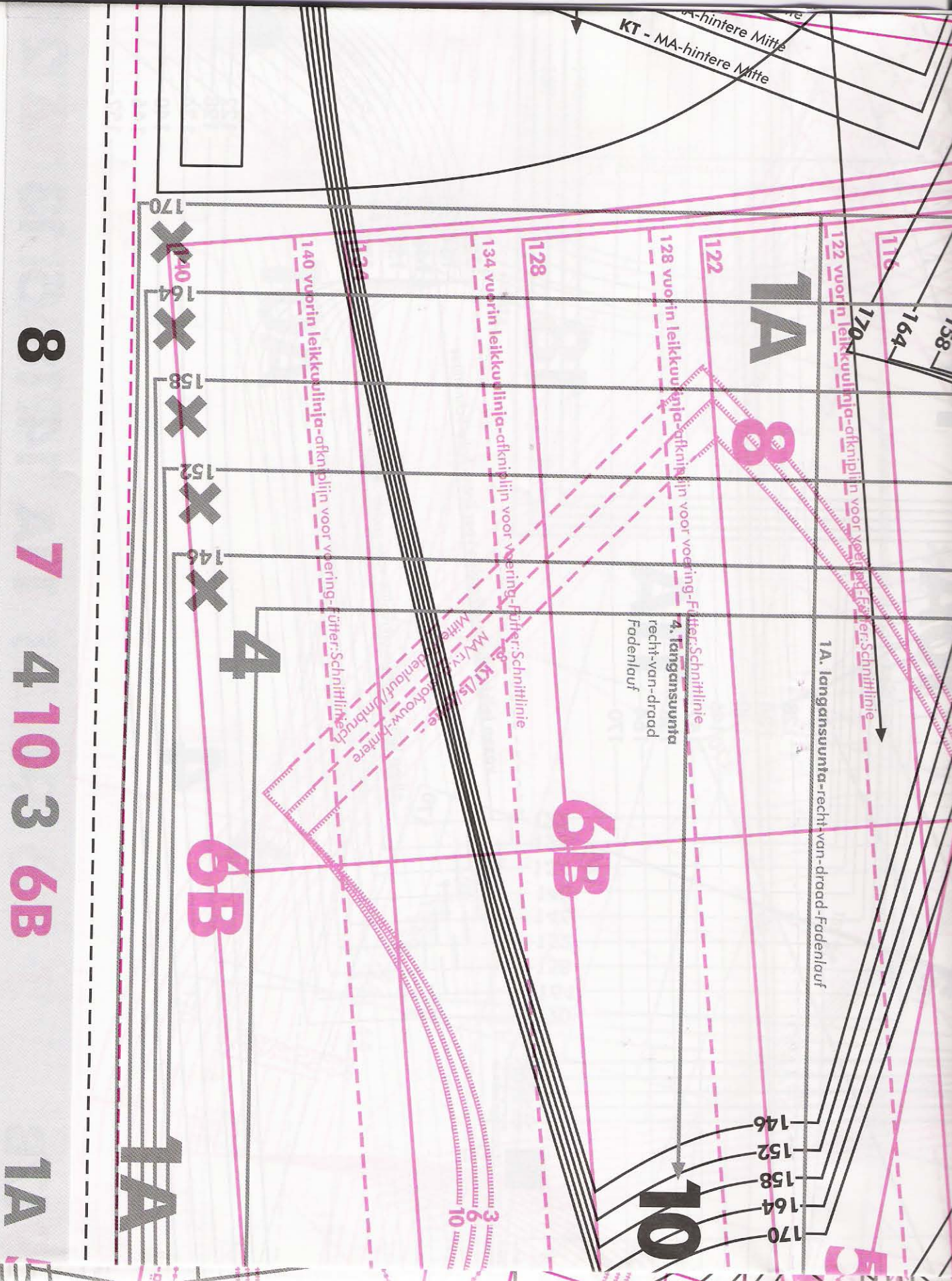
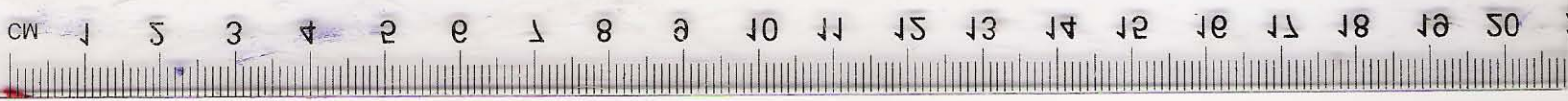
10 vuorin teikkoulin-aftknip

110 vuorin teikkoulin-aftknip

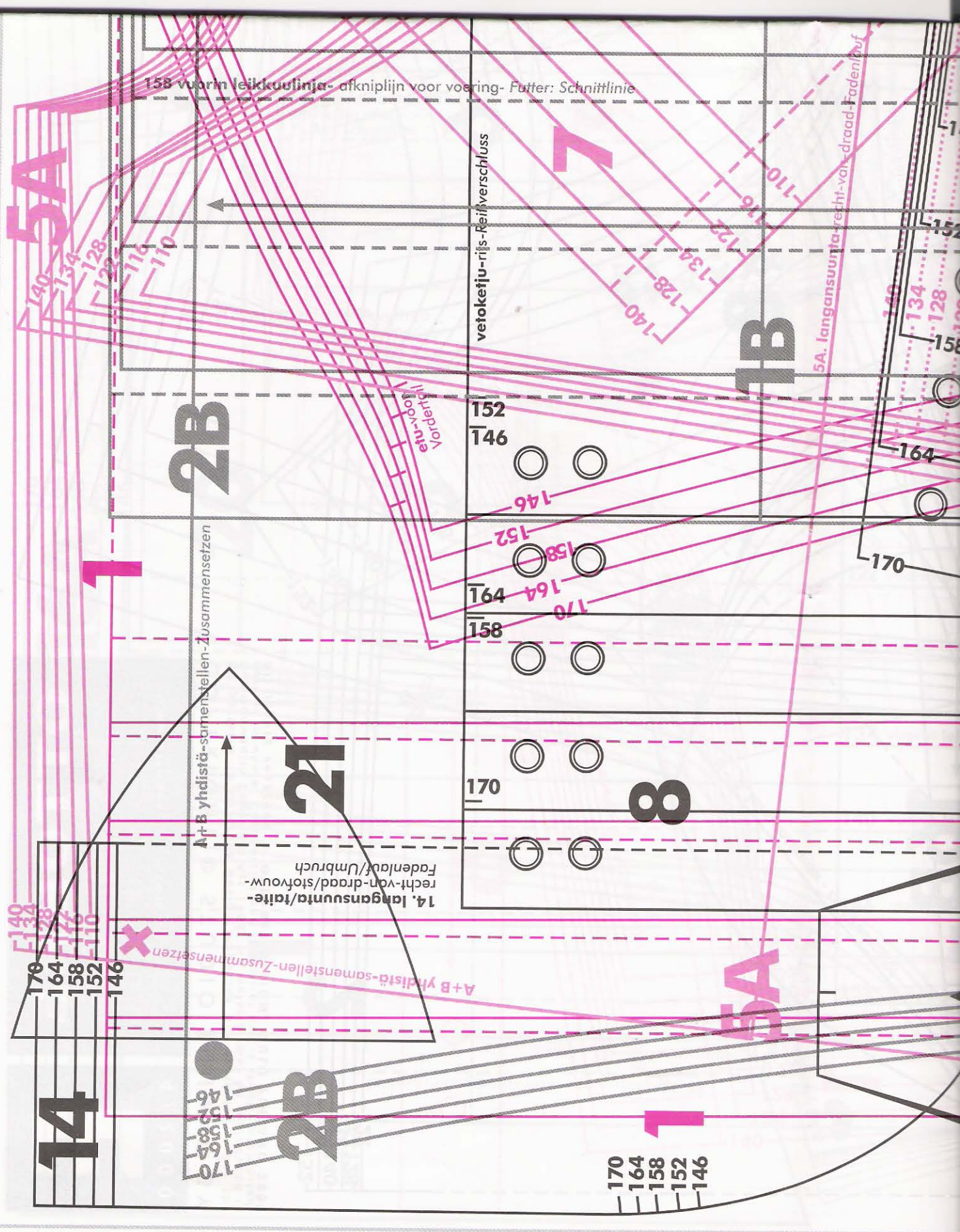
116 vuorin teikkoulin-aftknip

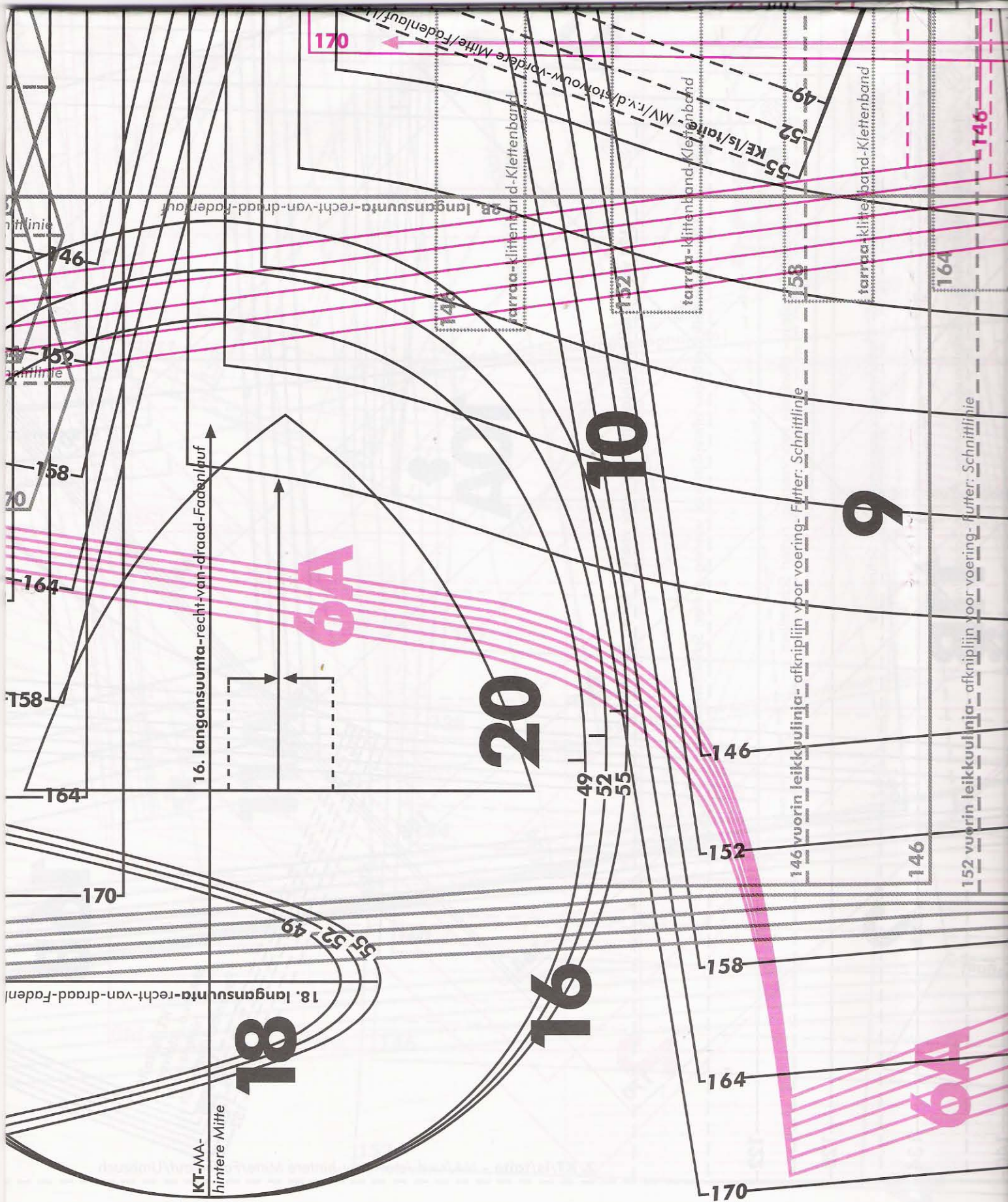
122 vuorin teikkoulin-aftknip

122



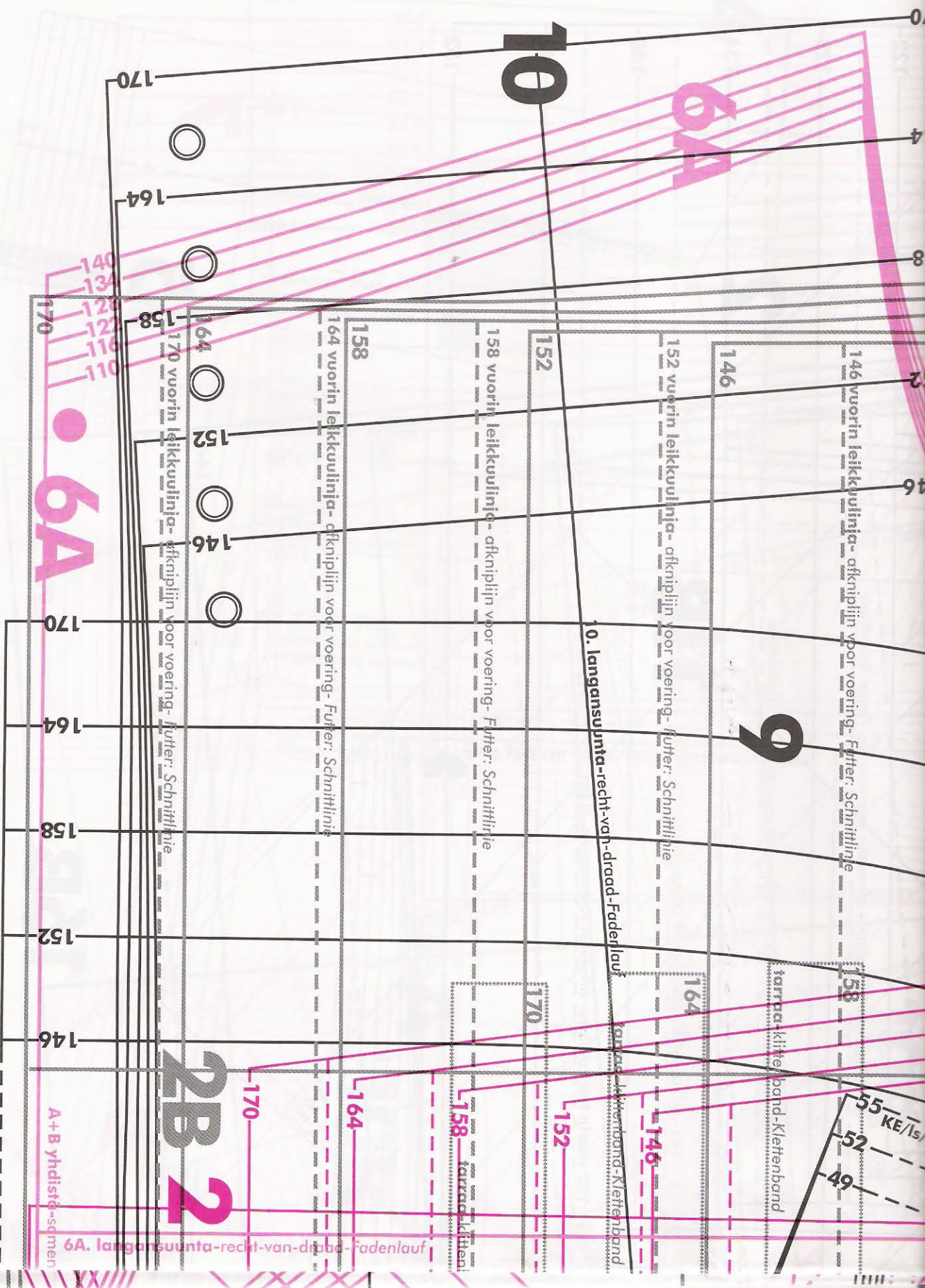
8
7
4
10
3
6B
1A

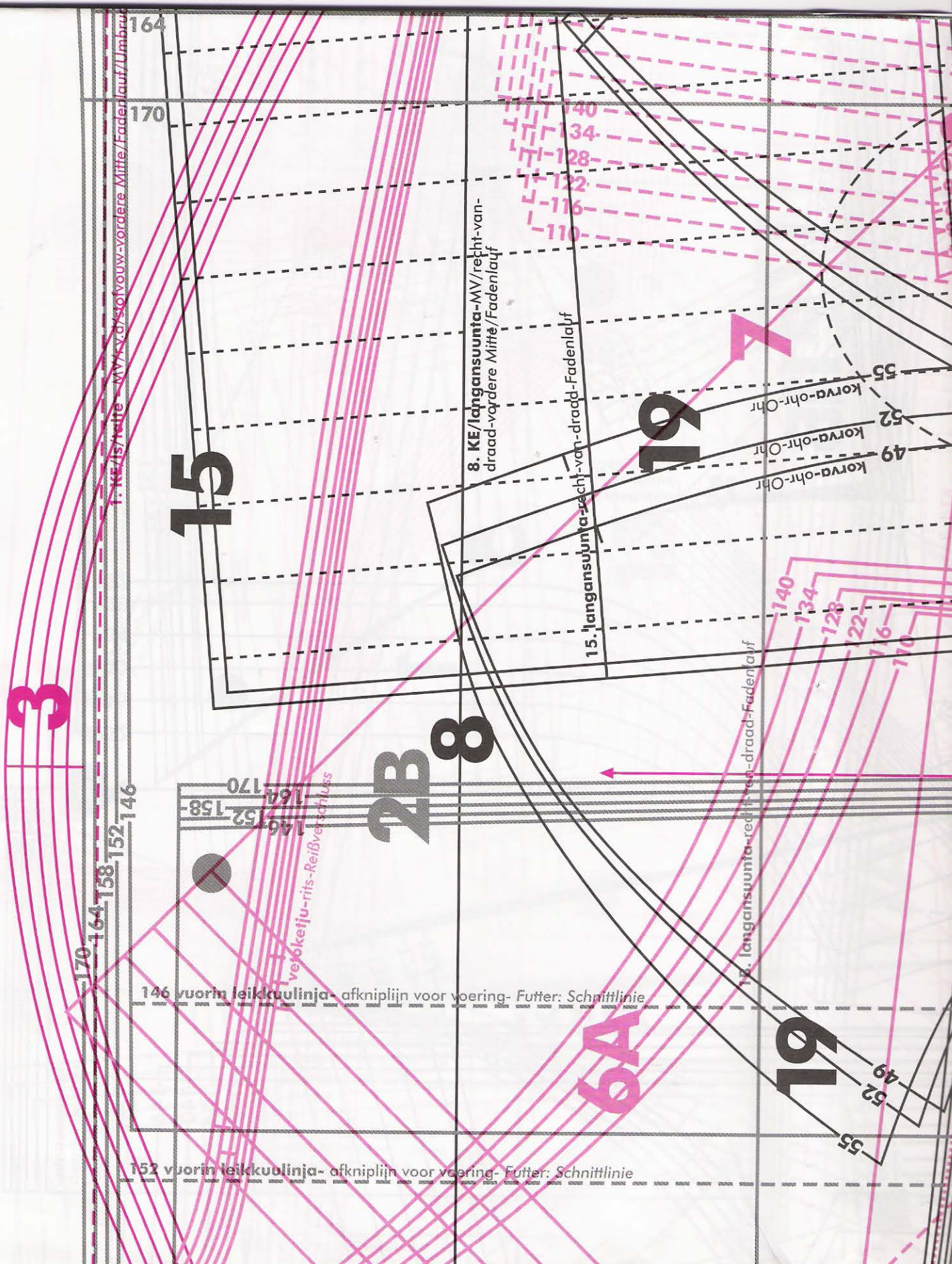


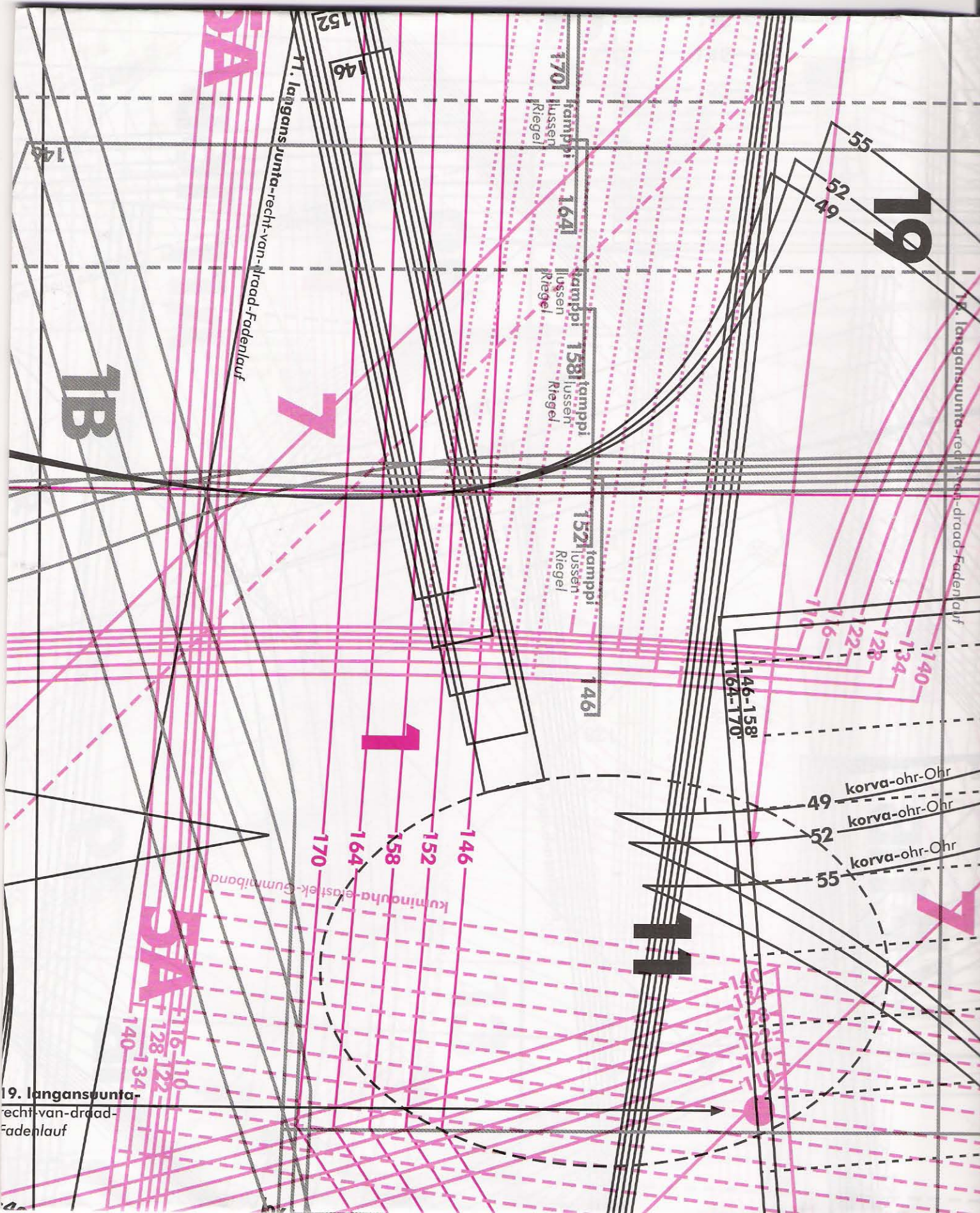


14 18 16 21 20 1

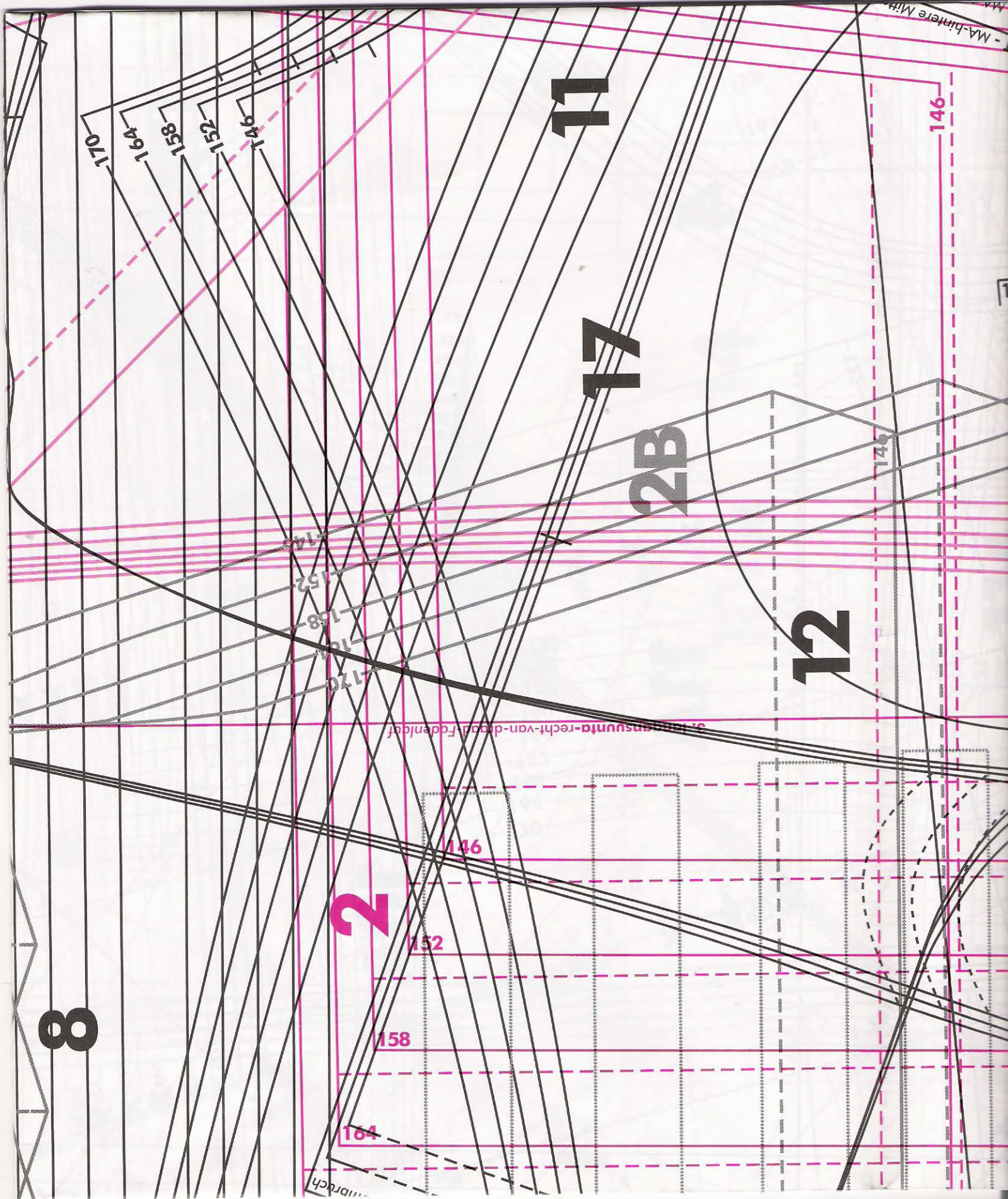
2B







0 1 2 3 4 5 6 7 8 9 10 11 12 13 14 15 16 17 18 19 20 21 22 23 24 25 26 27 28 29 30 31 32 33 34 35 36 37 38 39 40 41 42 43 44 45 46 47 48 49 50



8

11

17

2B

12

2

146

146

152

158

164

170

164

158

152

146

146

Erreichte Rechtschaffenheit von der Forderung

- MA-hintere Mit

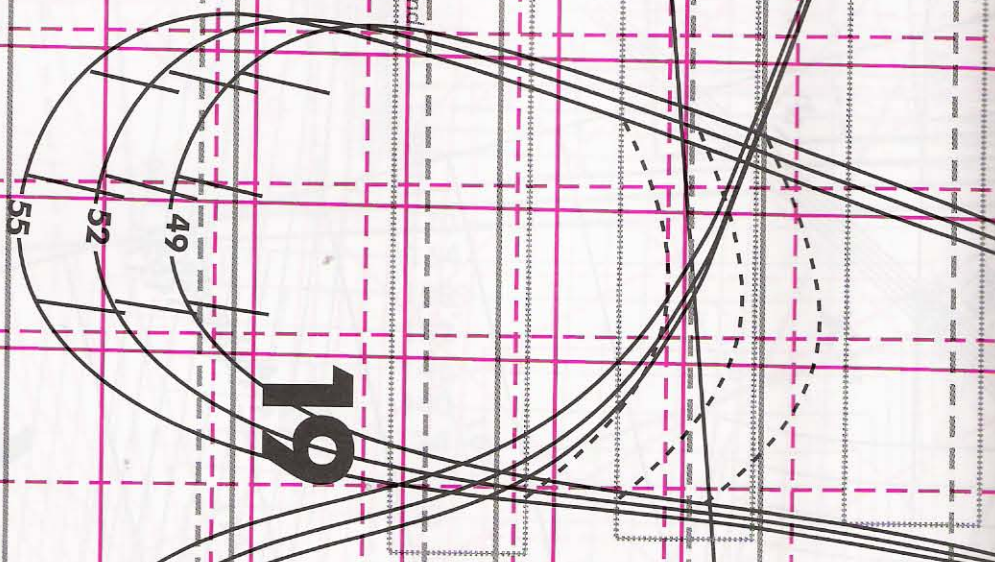
March



6A

19 1B 10 12 6A 15 17 3 11

stellen-Zusammensetzen



19

10

12

famppi-lussen-Riegel

6A

- 110
- 119
- 122
- 128
- 134
- 140

17

170

164

158

170

158

158

146

152

146

12. langansumta-recht-van-draad-Fodenlauf

3

152

146

49

164

55

158

170

KT - MA-hintere Mitt
KT - MA