

**10**

langansuunta / falte -  
recht - van - draad / stopvoov -  
Foderkauf / Umbruch

140  
138  
122  
116

kuiniouha - elastiek - Gummiband

kuiniouha - elastiek - Gummiband

5. Kt / Is / falte - Ma / r.v.d. / stof / o.v.w. / inlere Mitte / Fodenlauf / Umbruch

**14**

**1A**

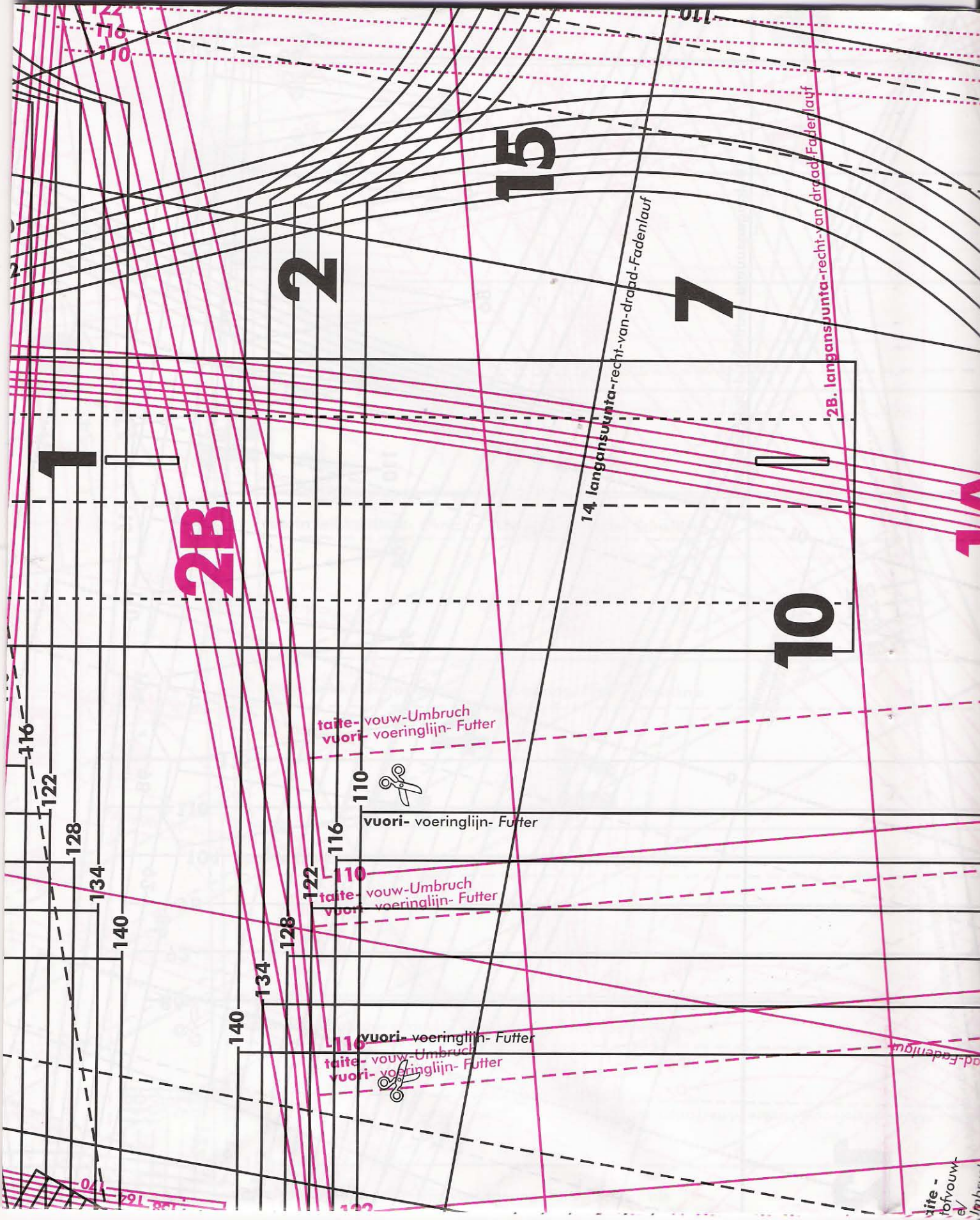
vuori - voeringliin - Futter

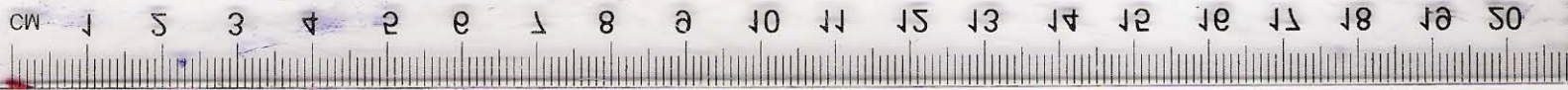
taipe - vouw - Umbruch  
vuori - voeringliin - Futter

taipe - vouw - Umbruch  
vuori - voeringliin - Futter

140  
134  
128  
122  
116

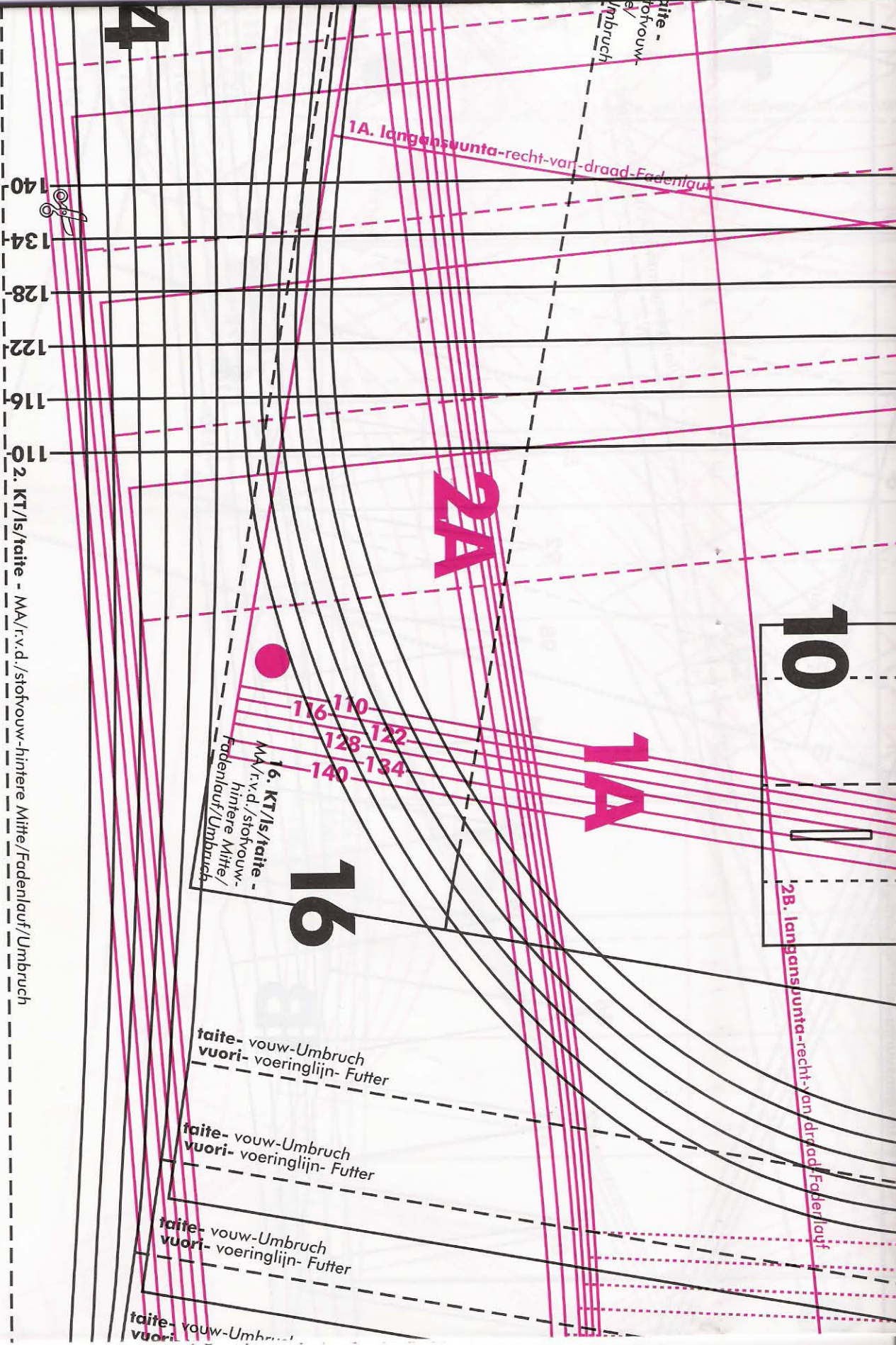
**3**

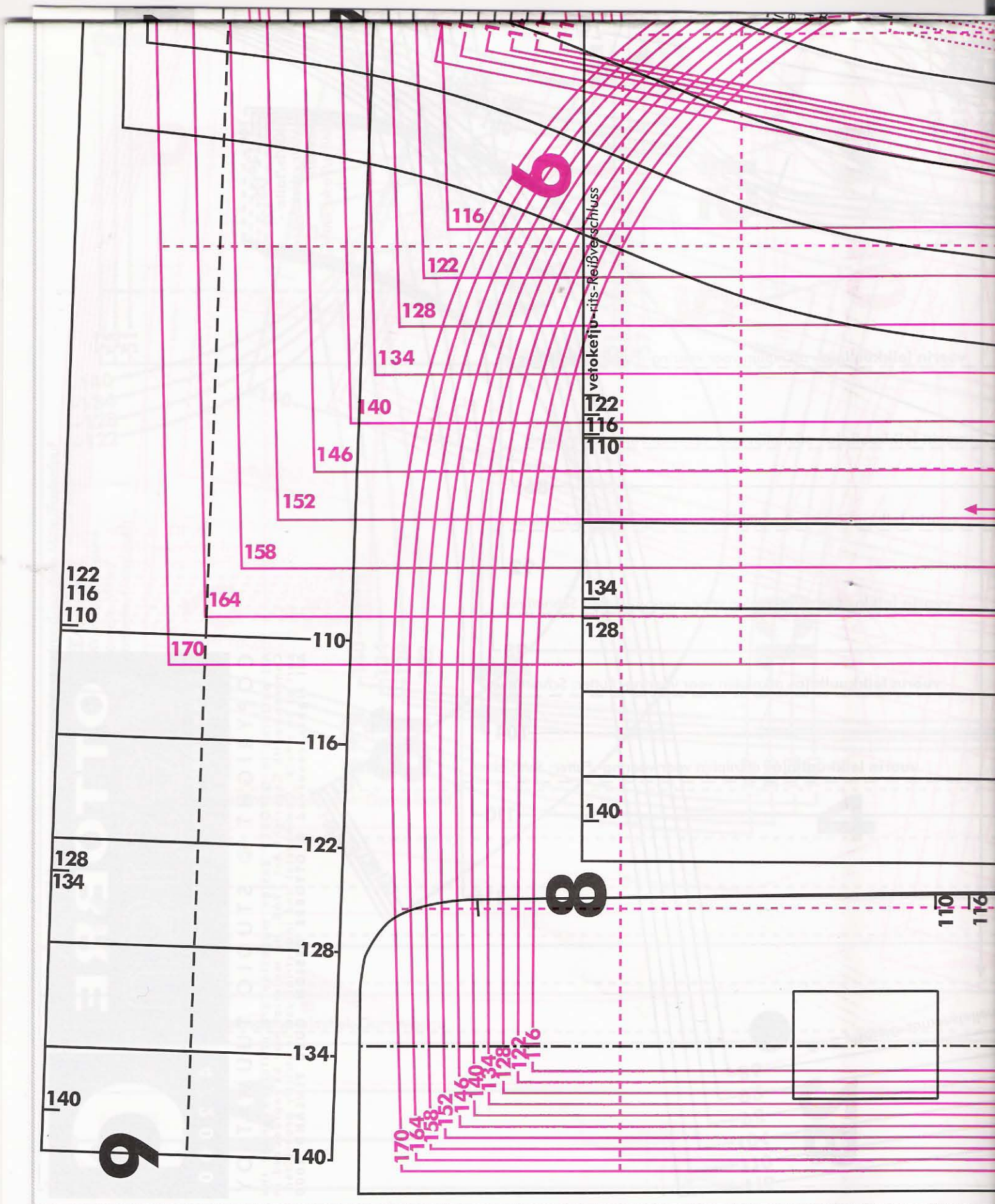


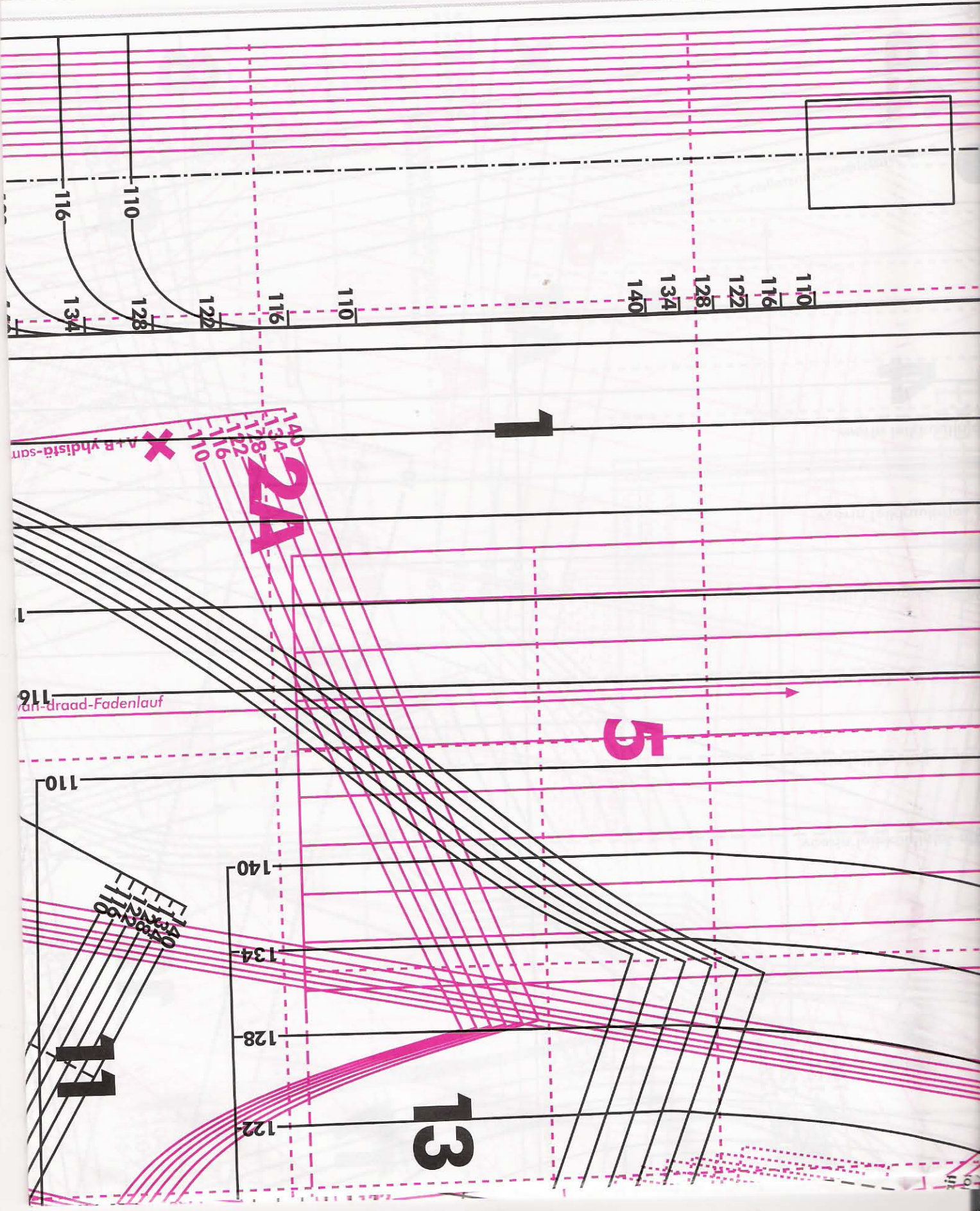
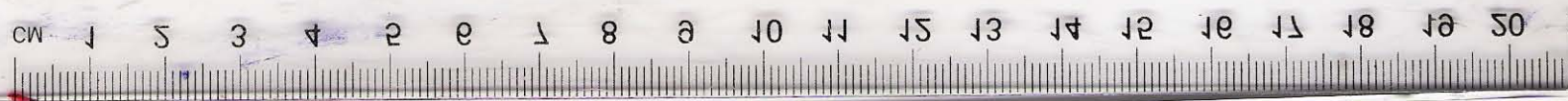


4

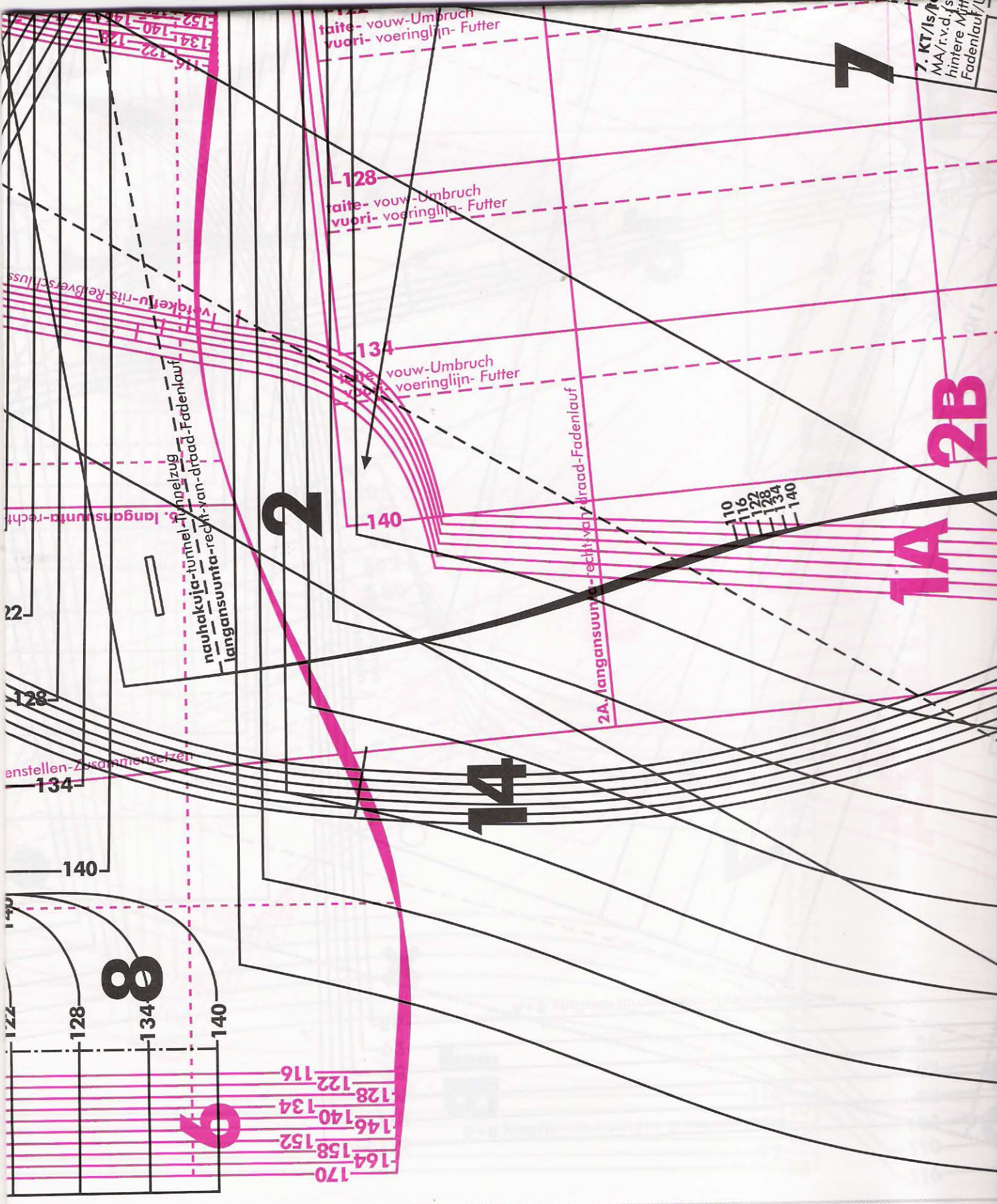
2A 10 1A 1 7





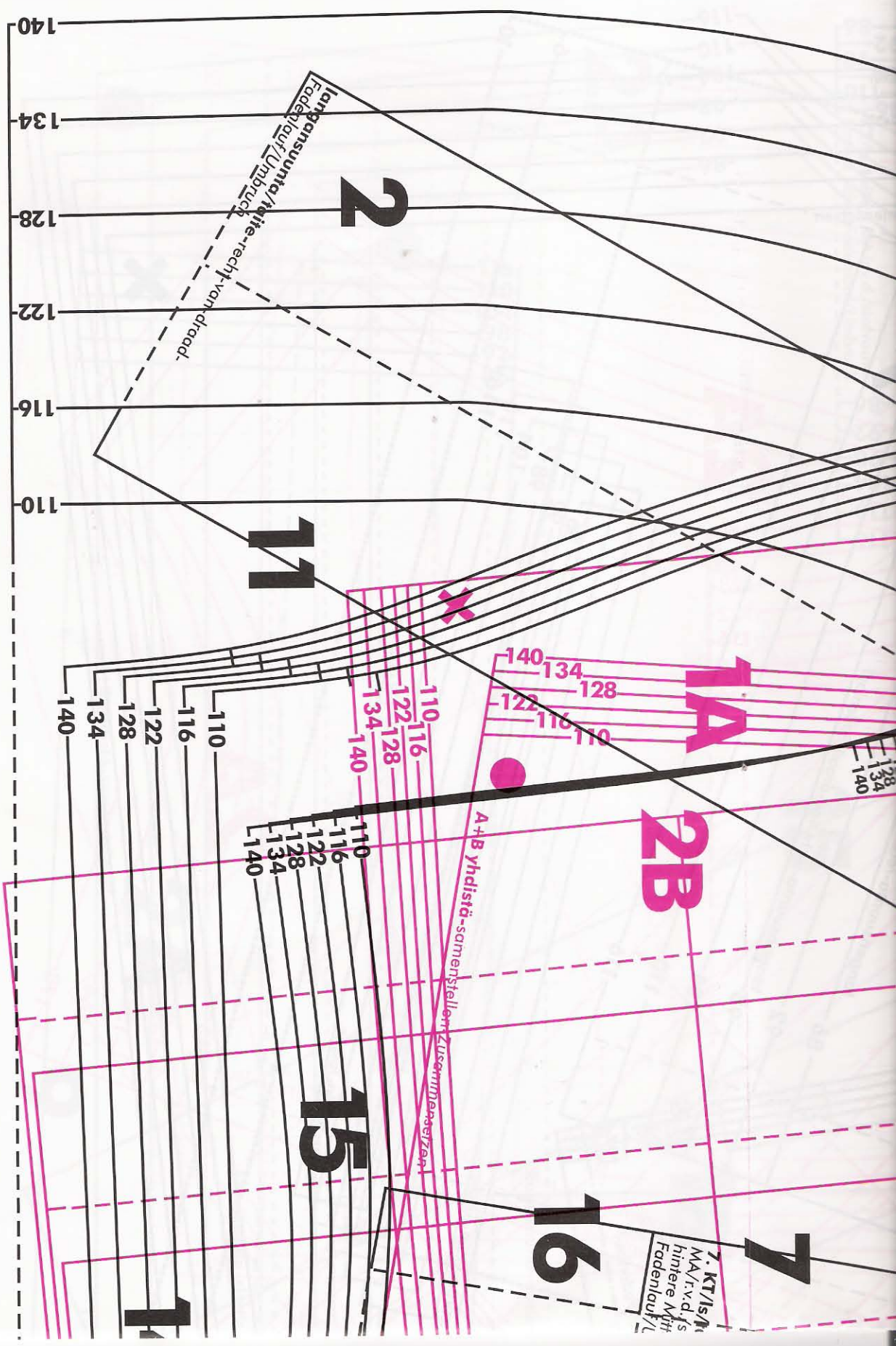


0 1 2 3 4 5 6 7 8 9 10 11 12 13 14 15 16 17 18 19 20





9 6 8 11 15 16 1



langansuunta / tie-recht van draad.  
Fadenlauf / Umbuch

2

11

1A

2B

15

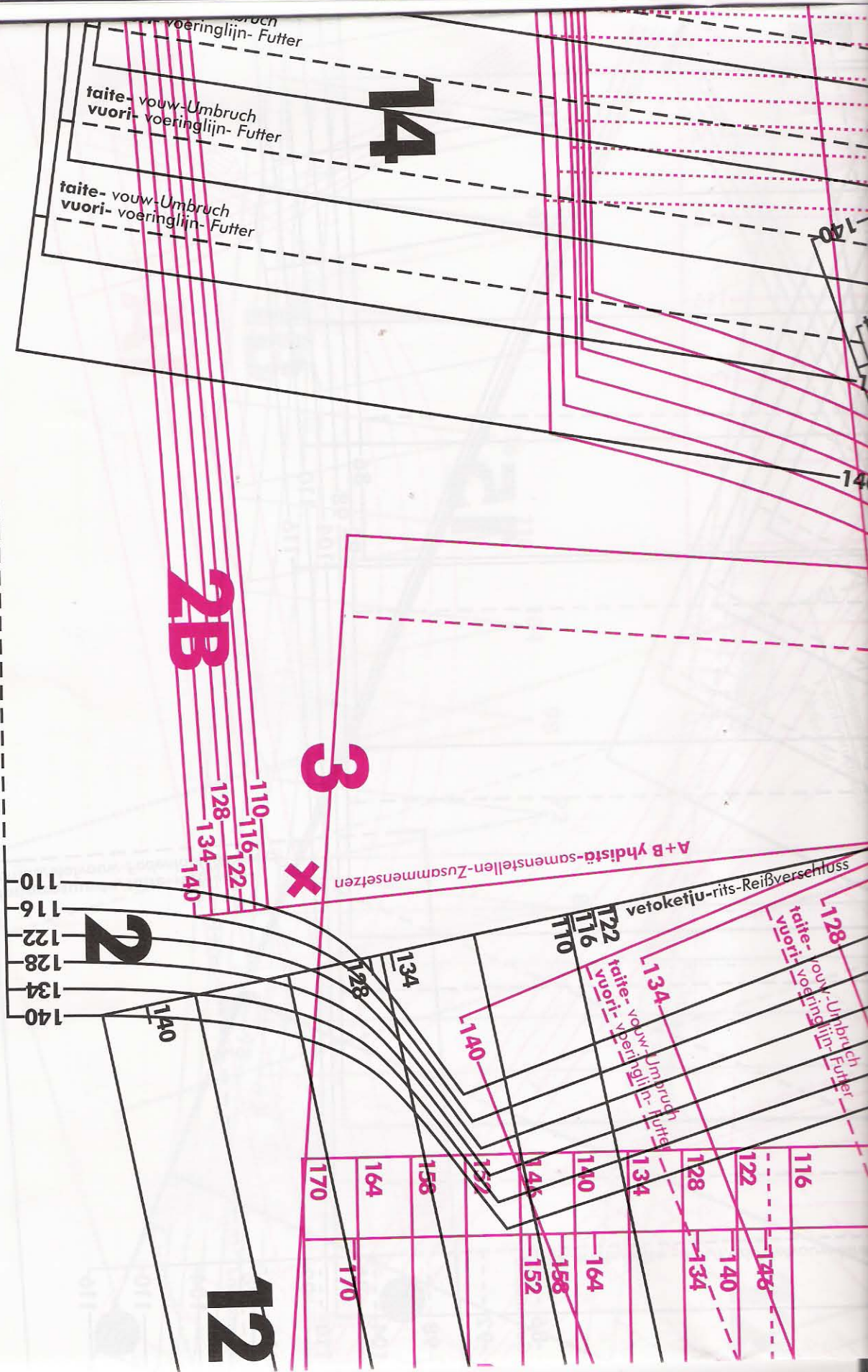
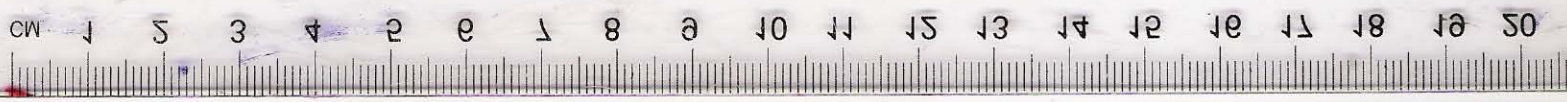
16

7

A+B yhdistä-samenstellen / Zusammensetzen

7. KT / s/M  
hintere Mitt  
Fadenlauf / L





5 2B 3 2 4 12



**1B**

**5**

**12**

**4**

**4**

**4**



- 116
- 122
- 128
- 134
- 140
- 146
- 152
- 158
- 164
- 170

- 110
- 116
- 122
- 128
- 134
- 140

- 170
- 164
- 158
- 152
- 146
- 140
- 134
- 128
- 122
- 116

- 122
- 116
- 110

- 140
- 134
- 128
- 122
- 116
- 110
- 128
- 122
- 116
- 110
- 128
- 122
- 116
- 110

suunta-MV/recht-van-draad-vordere Mitte/Fadenlauf

Malli A. tuulilista-kleplijn - Modell A. Windschutzstreifen

1B. langansuunta-recht-van-draad-Fadenlauf

Malli 24. langansuunta-  
Modell 24. recht-van-draad-  
Modell 23. Fadenlauf

3. langansuunta-  
recht-van-draad-  
Fadenlauf

13. KT/ls/raite

te/Fadenlauf

12

3

1

13

9

1B

140  
134  
122  
116  
110

140  
134  
128  
122  
116  
110

140  
134  
128  
122  
116  
110

140  
134  
128  
122  
116  
110

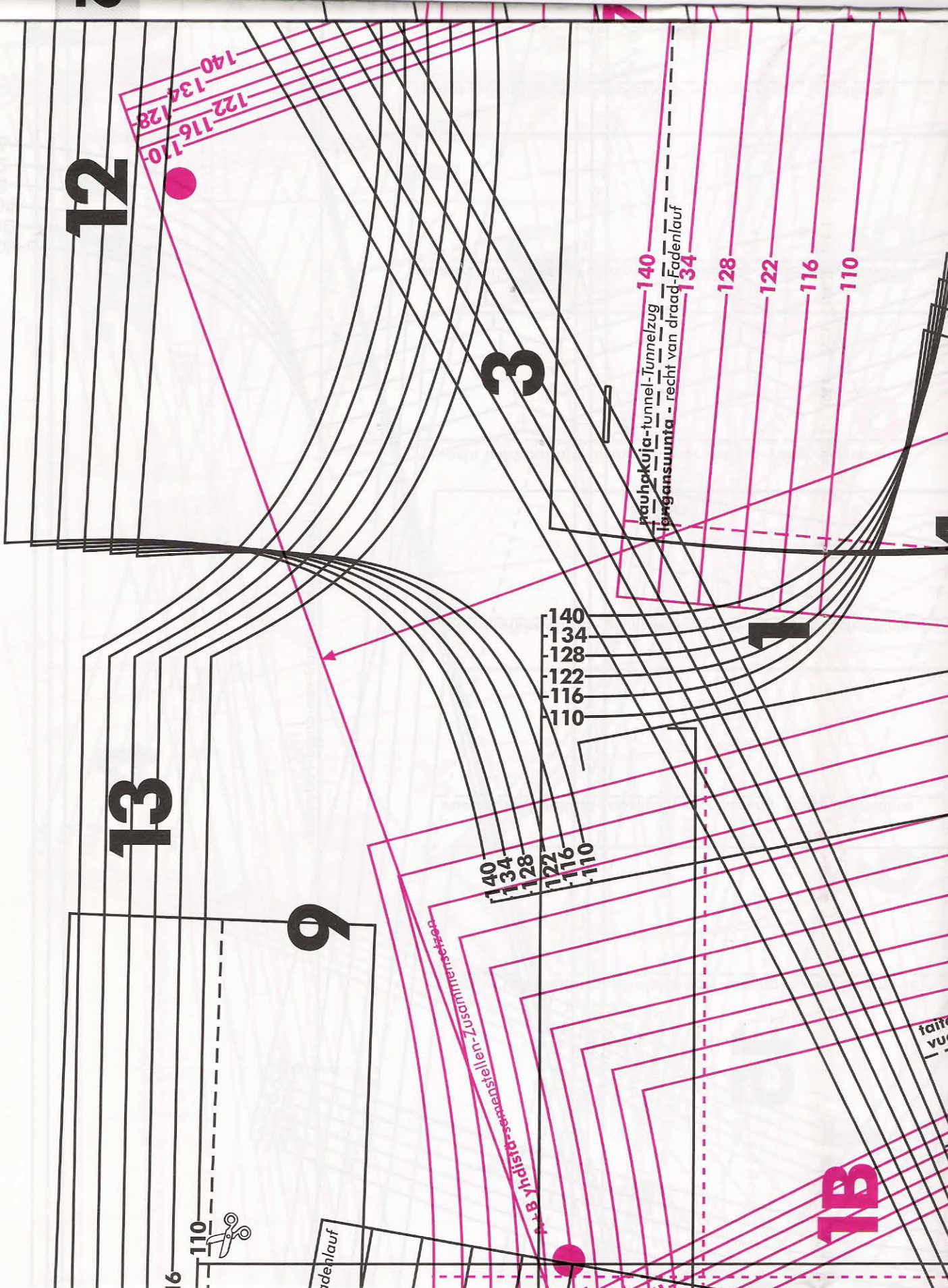
16  
110

aden/lauf

140  
134  
128  
122  
116  
110

taite-  
vuori-

taite-  
vuori-

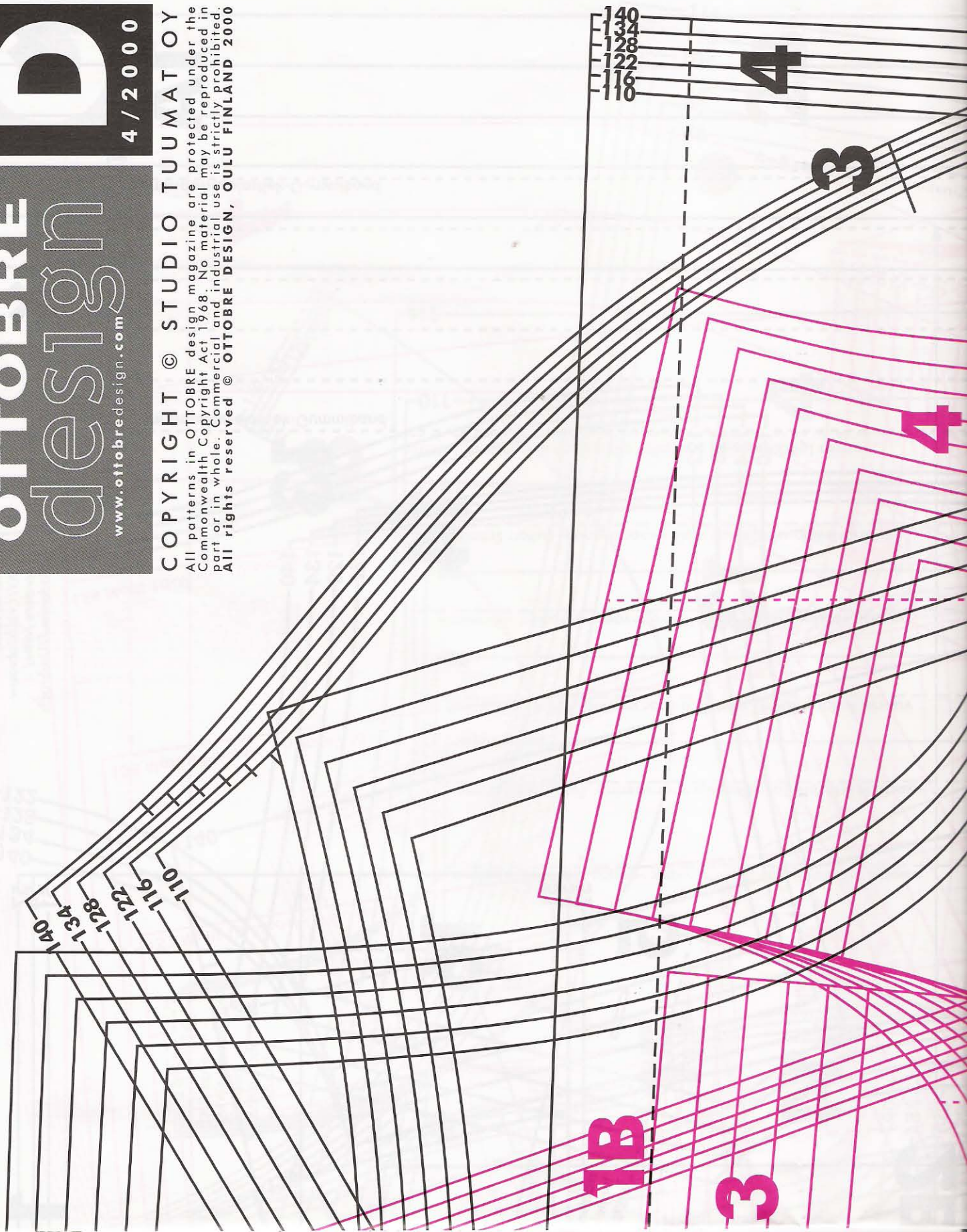


5 3 4 2 0 1 8 0 10 11 15 13 14 12 10 11 18 10 50

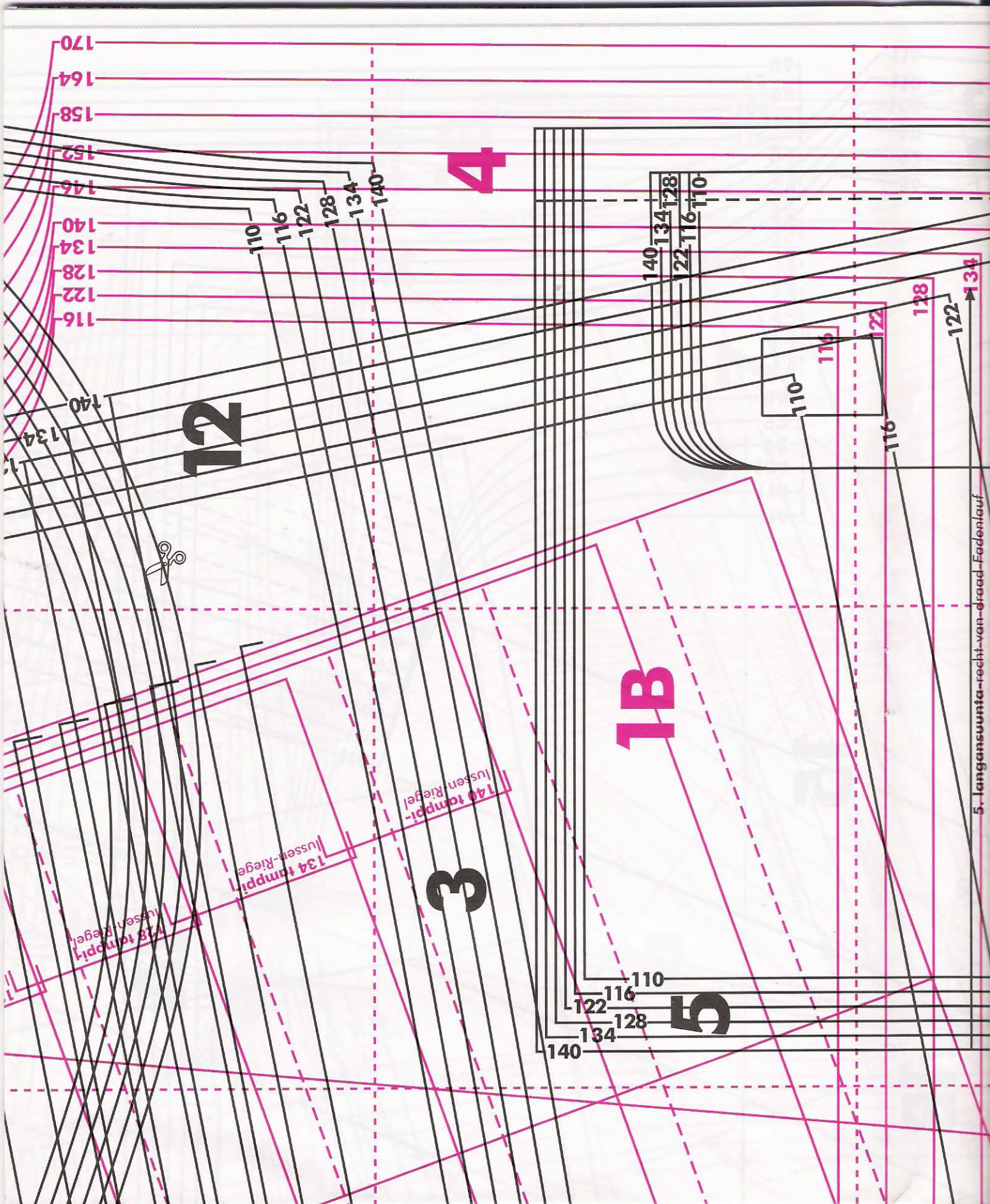
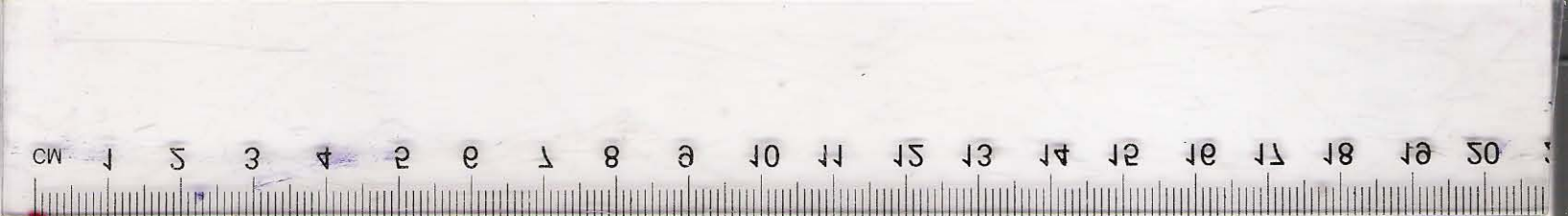
**OTTOBRE**  
**design**  
[www.ottobredesign.com](http://www.ottobredesign.com)

**D**  
 4 / 2000

**COPYRIGHT © STUDIO TUUMAT OY**  
 All patterns in OTTOBRE design magazine are protected under the  
 Commonwealth Copyright Act 1968. No material may be reproduced in  
 part or in whole. Commercial and industrial use is strictly prohibited.  
 All rights reserved © OTTOBRE DESIGN, OULU FINLAND 2000







**12**

**4**

**1B**

**3**

**5**

118 temp  
lusen-Riegel

134 temp  
lusen-Riegel

140 temp  
lusen-Riegel

5. langansuunta-recht-van-draad-Fedenlauf

170  
164  
158  
152  
146  
140  
134  
128  
122  
116

110  
116  
122  
128  
134  
140

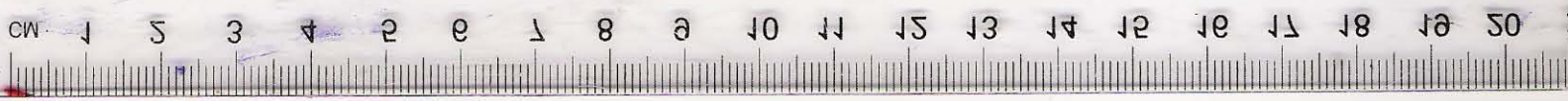
140  
134  
128  
122  
116  
110

110  
116  
122

128  
122  
134

110  
116  
122  
128  
134  
140





**2 4**

**3 13 1B**

**6**

**5**

