

134 tasku-zaklijn-tasche

140

98

146

104

152

110

116

122

128

134

140

146 tasku-zaklijn-tasche

152

170

164

158

152

146

140

134

128

122

116

110

104

98

92

Kl./Stüte - MA/r.v.d./stokrouw -
hintere Mitte/Fadenlauf/Umbruch

92

98

104

122

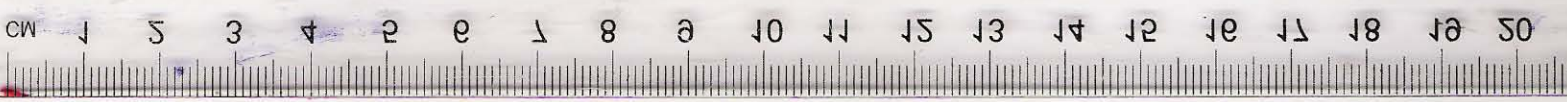


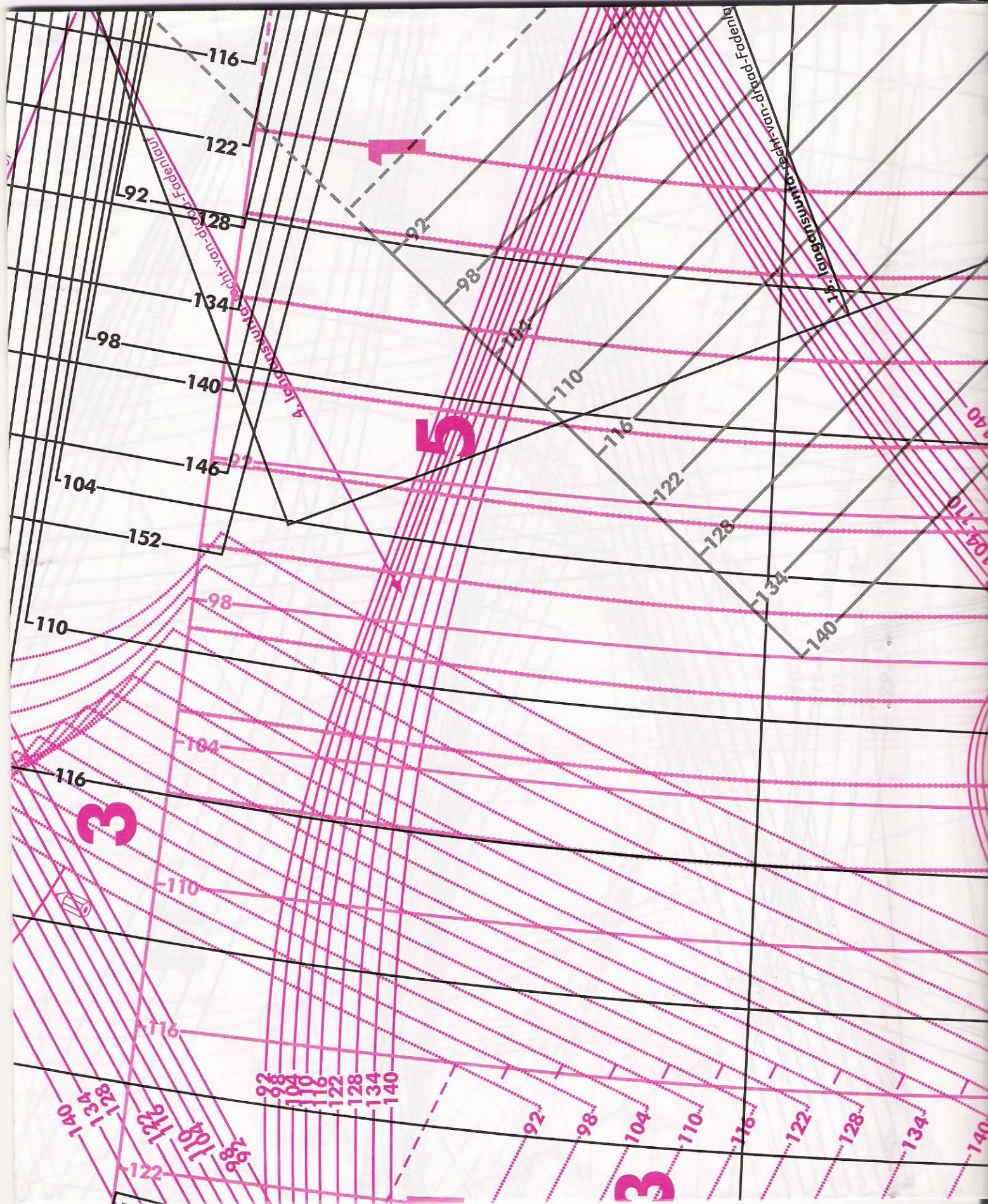
140
134

92 malli 26-model 20

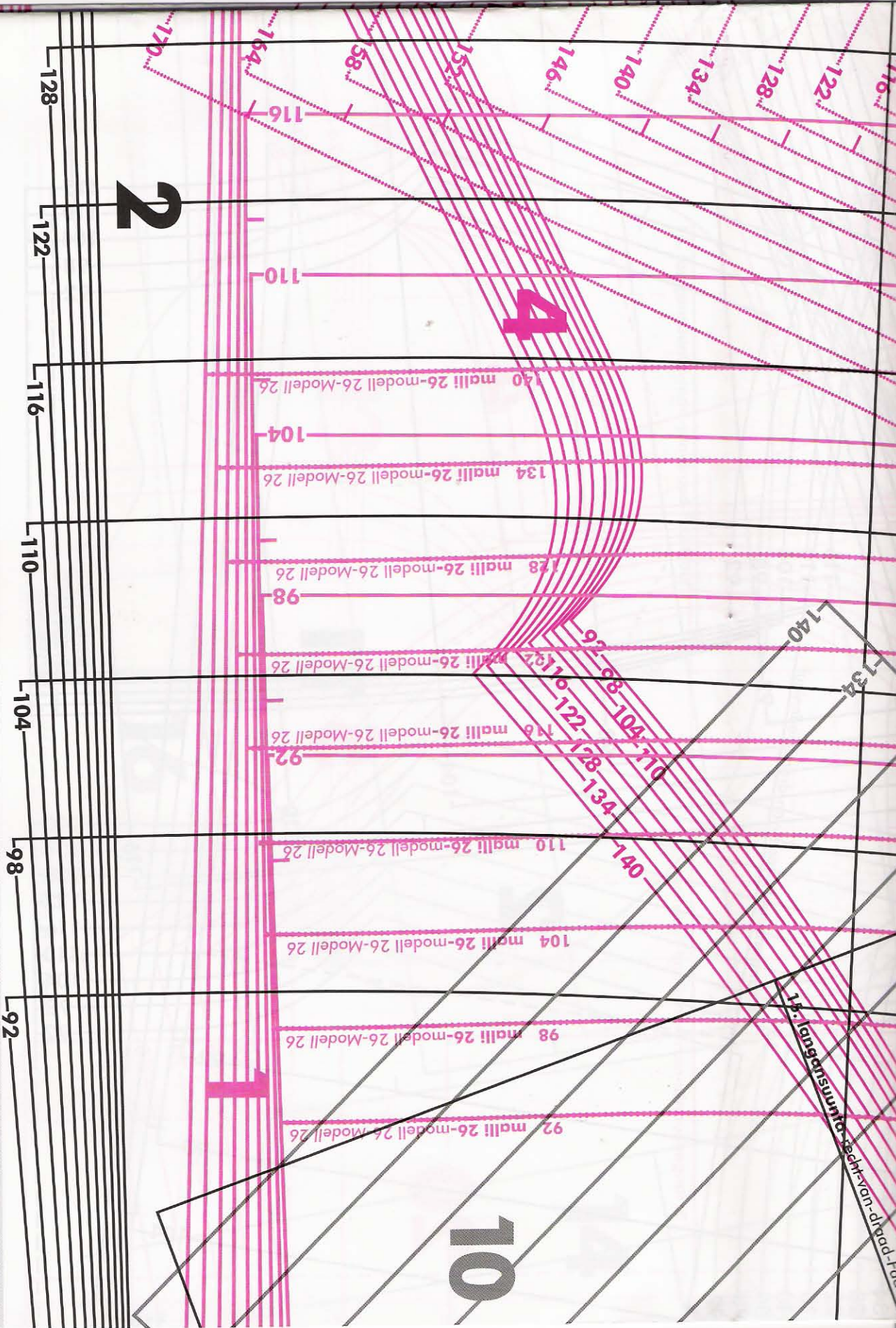
98 malli

104 malli

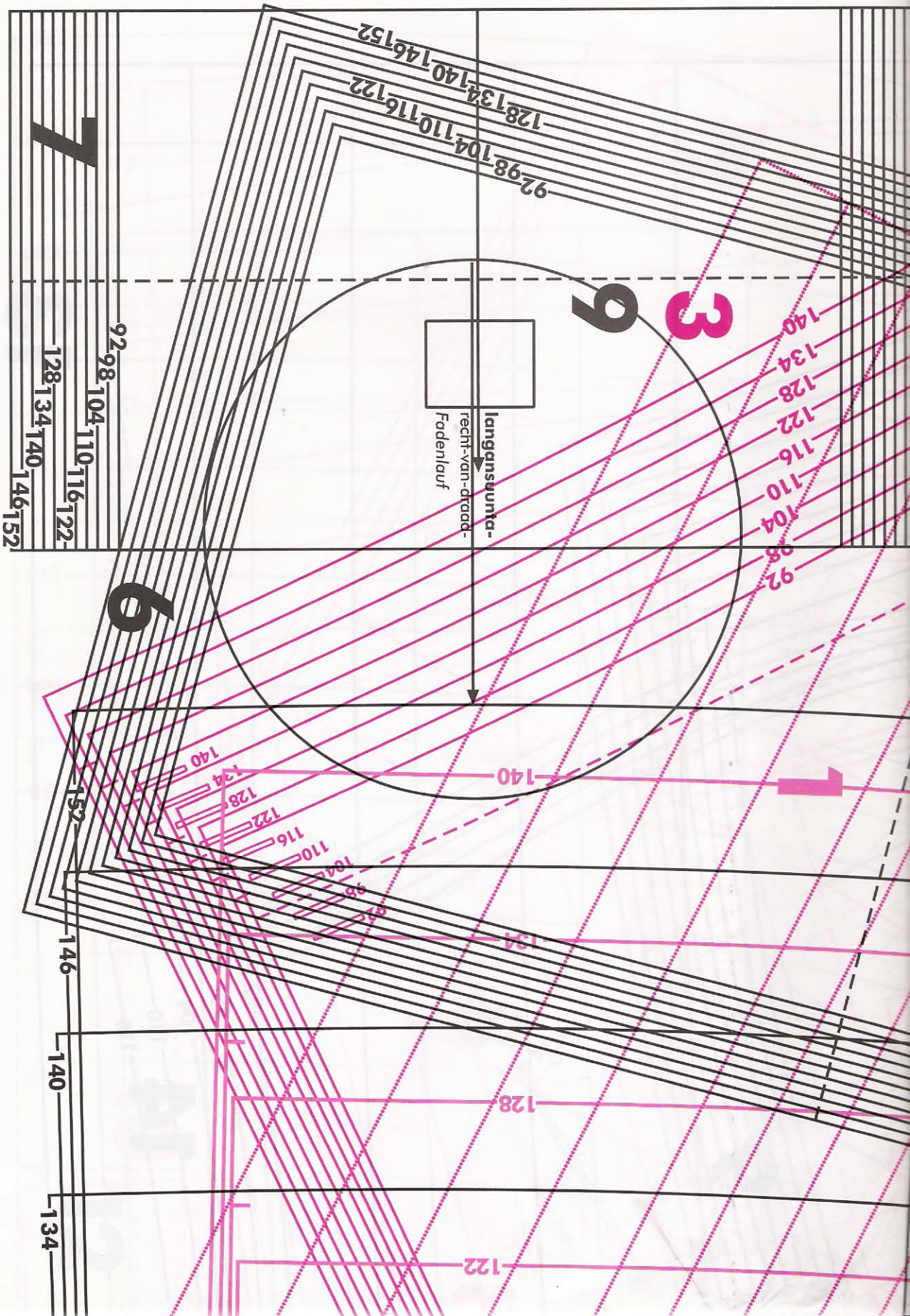




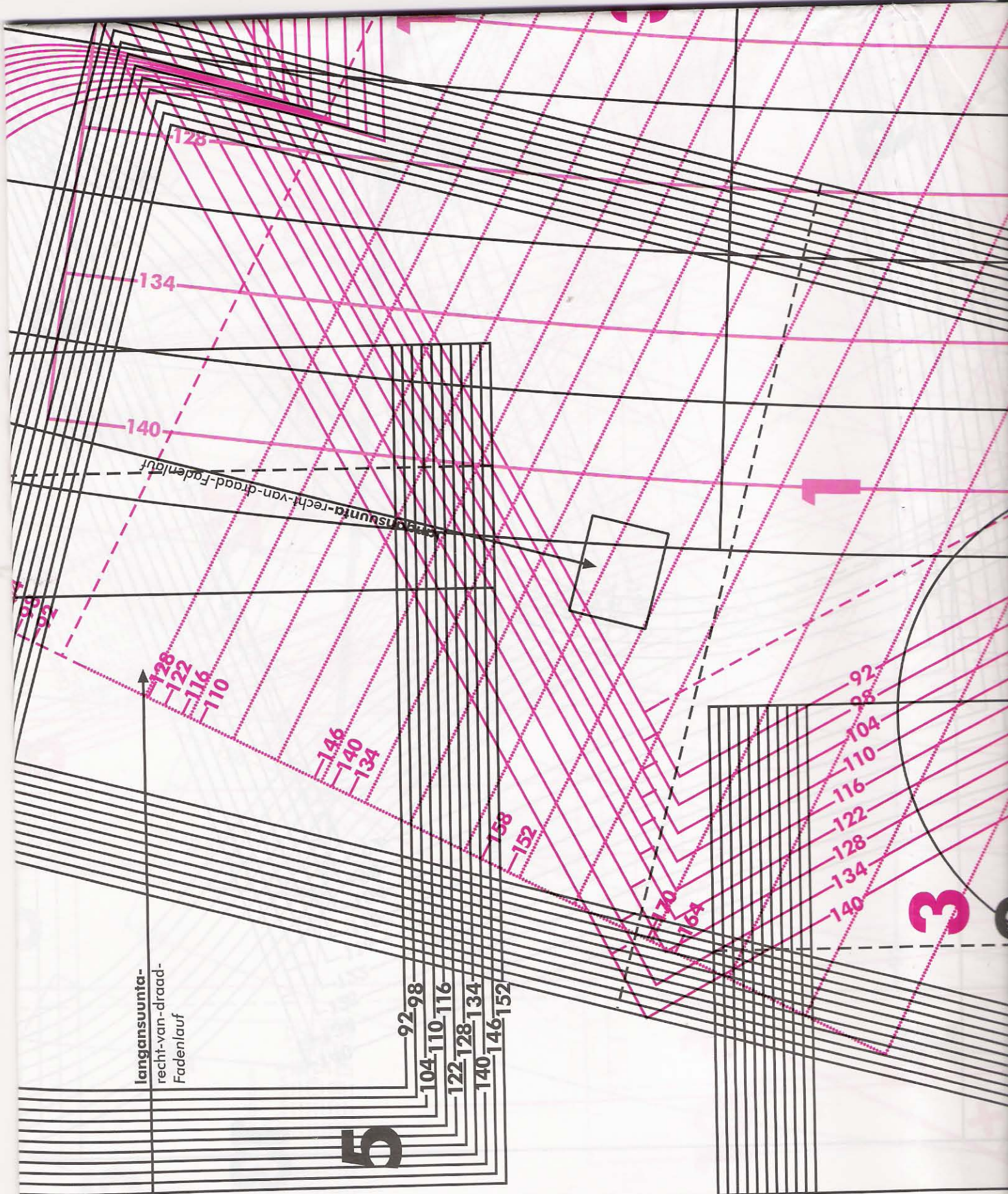
3 2 4 5 3 1 10

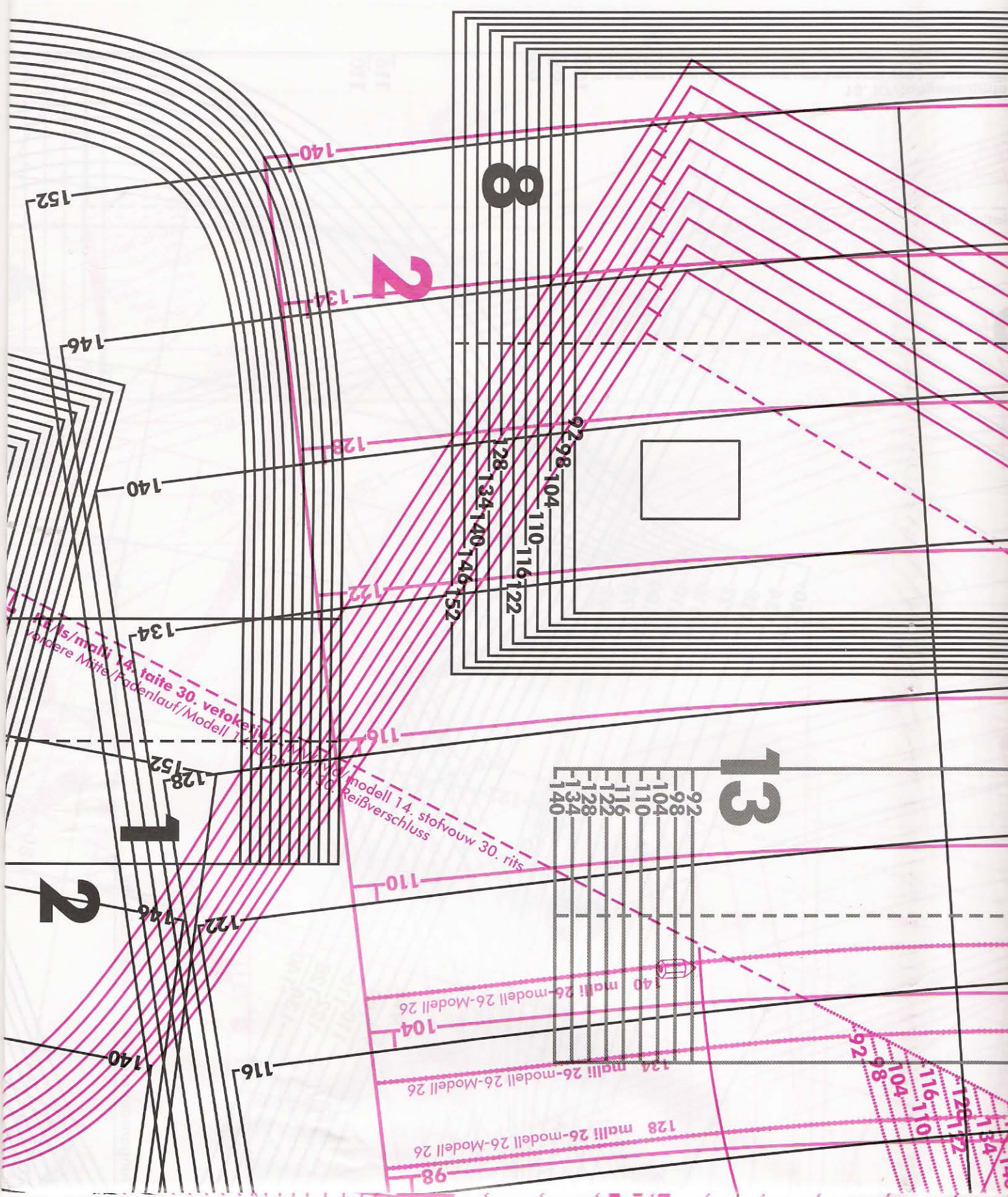


taske-zaklijn-tasche



5 7 8 9 6 13 1





14.5/malli 14. taite 30. vetokeijä
Vorpere Mitte/Fadenlauf/Modell 14

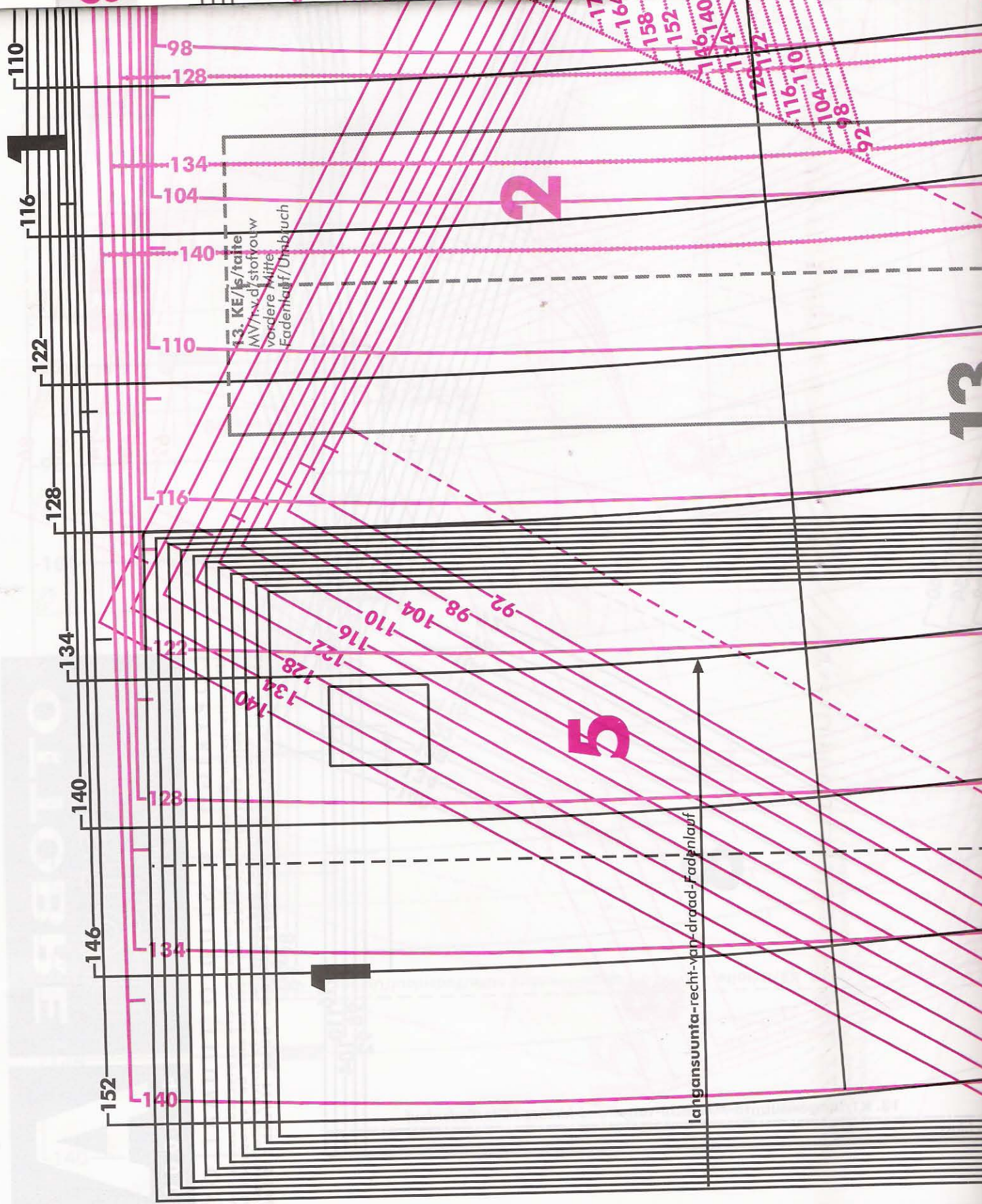
modell 14. stofvouw 30. rits
Reißverschluss

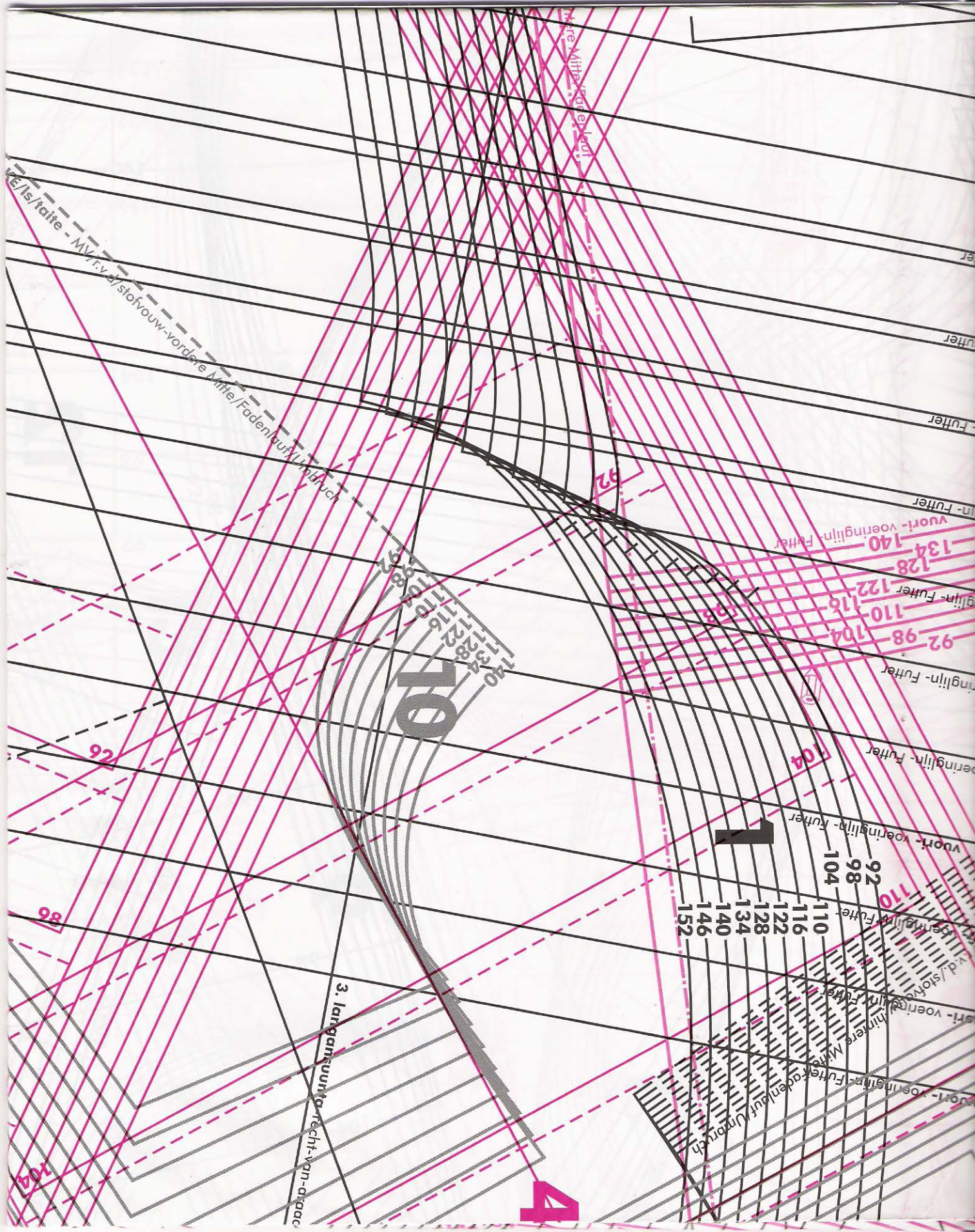
92
98
104
110
116
122
128
134
140

140 malli 26-modell 26-Modell 26
134 malli 26-modell 26-Modell 26
128 malli 26-modell 26-Modell 26
98

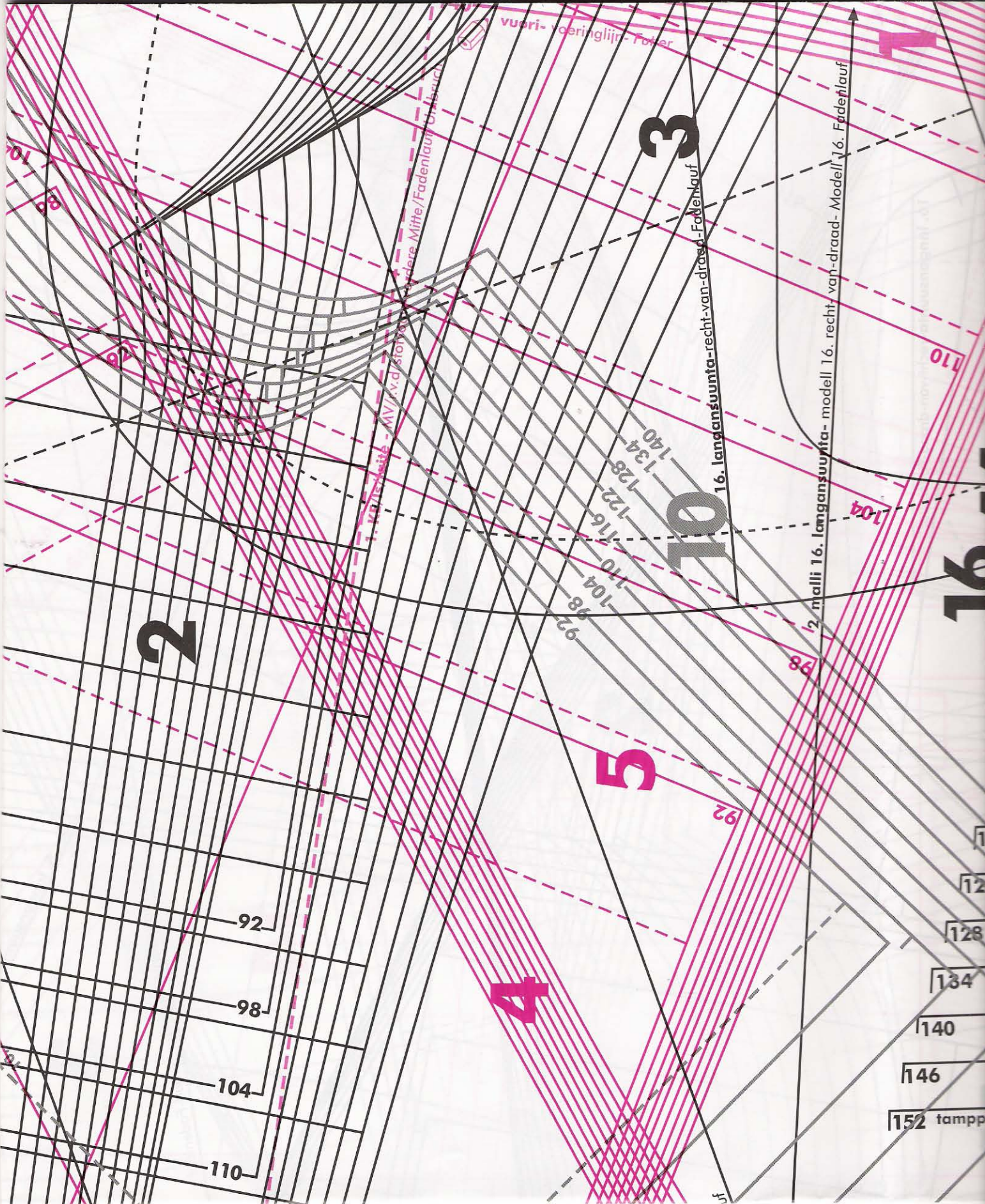
92
98
104
110
116
122
128
134
140

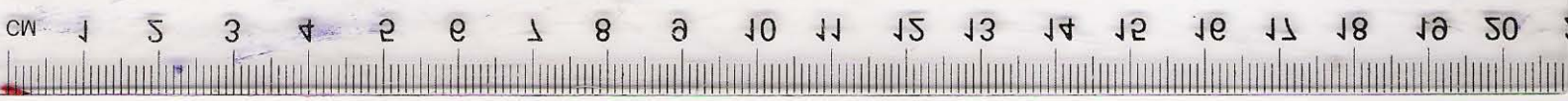
3





50 48 46 44 42 40 38 36 34 32 30 28 26 24 22 20 18 16 14 12 10 8 6 4 3 2 1 CM





2

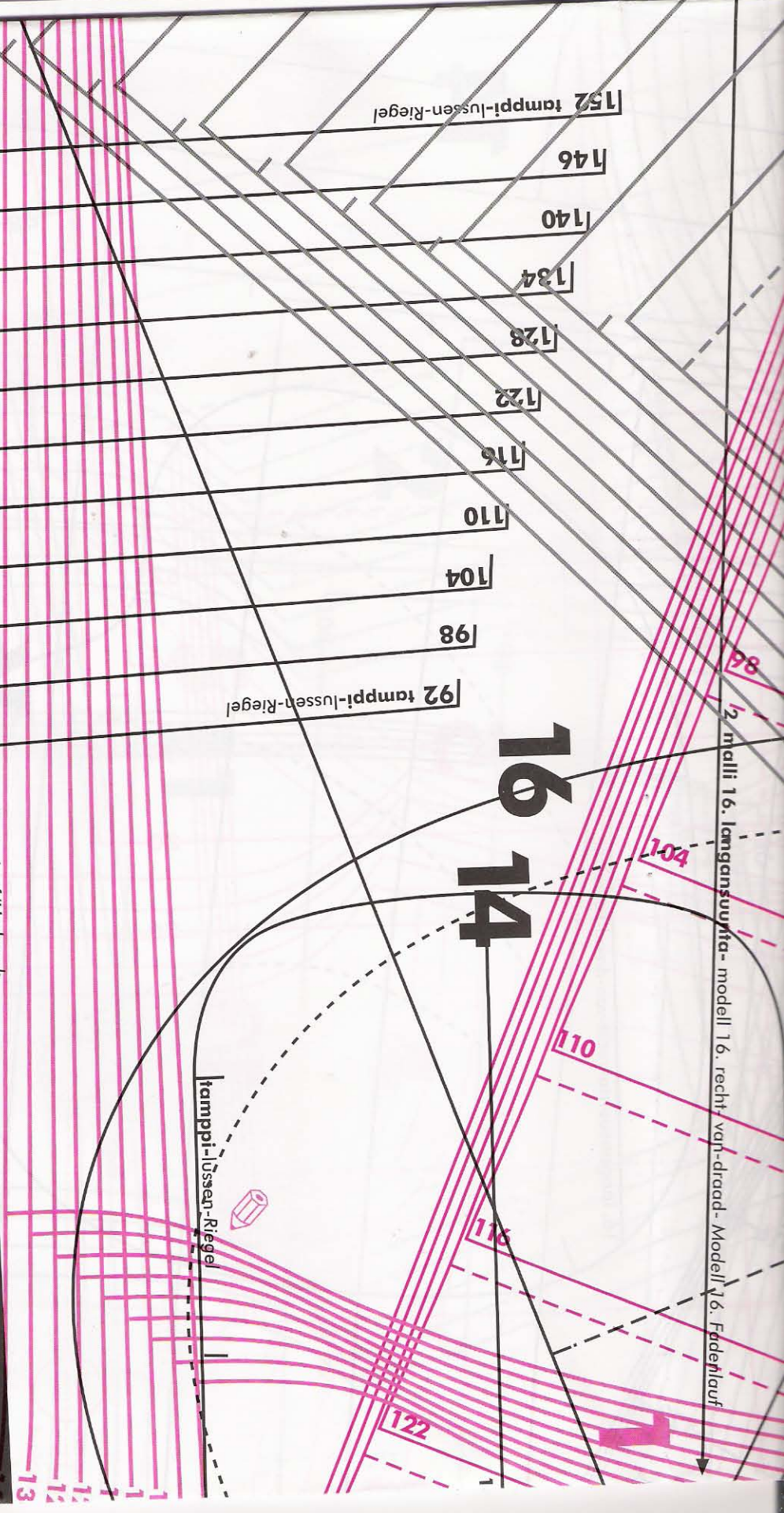
16 14

Malli 15. KT/Is/Spite - Modell 15. MA/r.v.d./stokoww-Modell 15. hintere Mitte/Fadenlauf/Umbruch

152 tamppi-lussen-Riegel
 146
 140
 134
 128
 122
 116
 110
 104
 98
 92 tamppi-lussen-Riegel

2. malli 16. langansuunita - modell 16. recht van draad - Modell 16. Fadenlauf

tamppi-lussen-Riegel

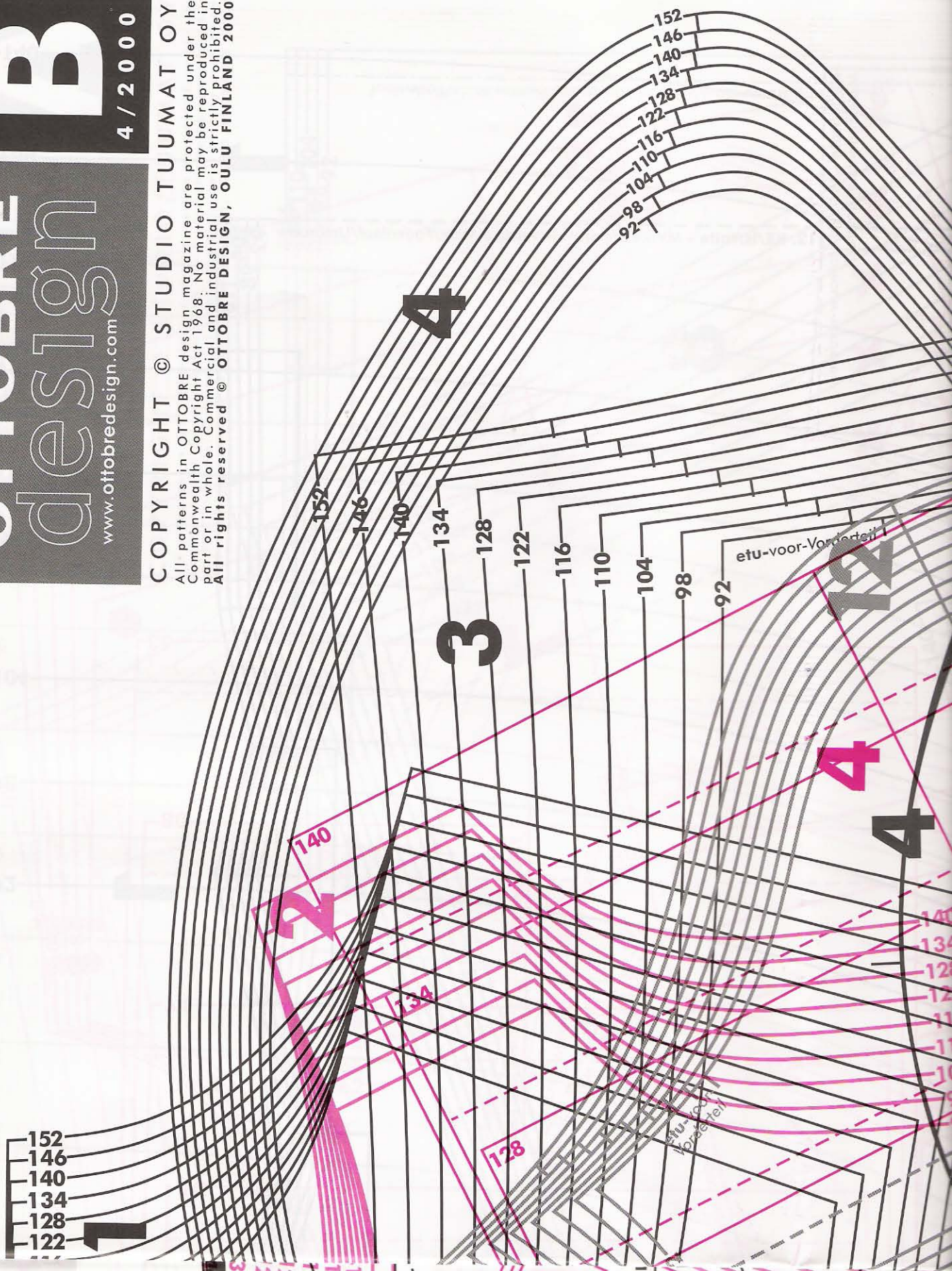




OTTOBRE
design
 www.ottobredesign.com

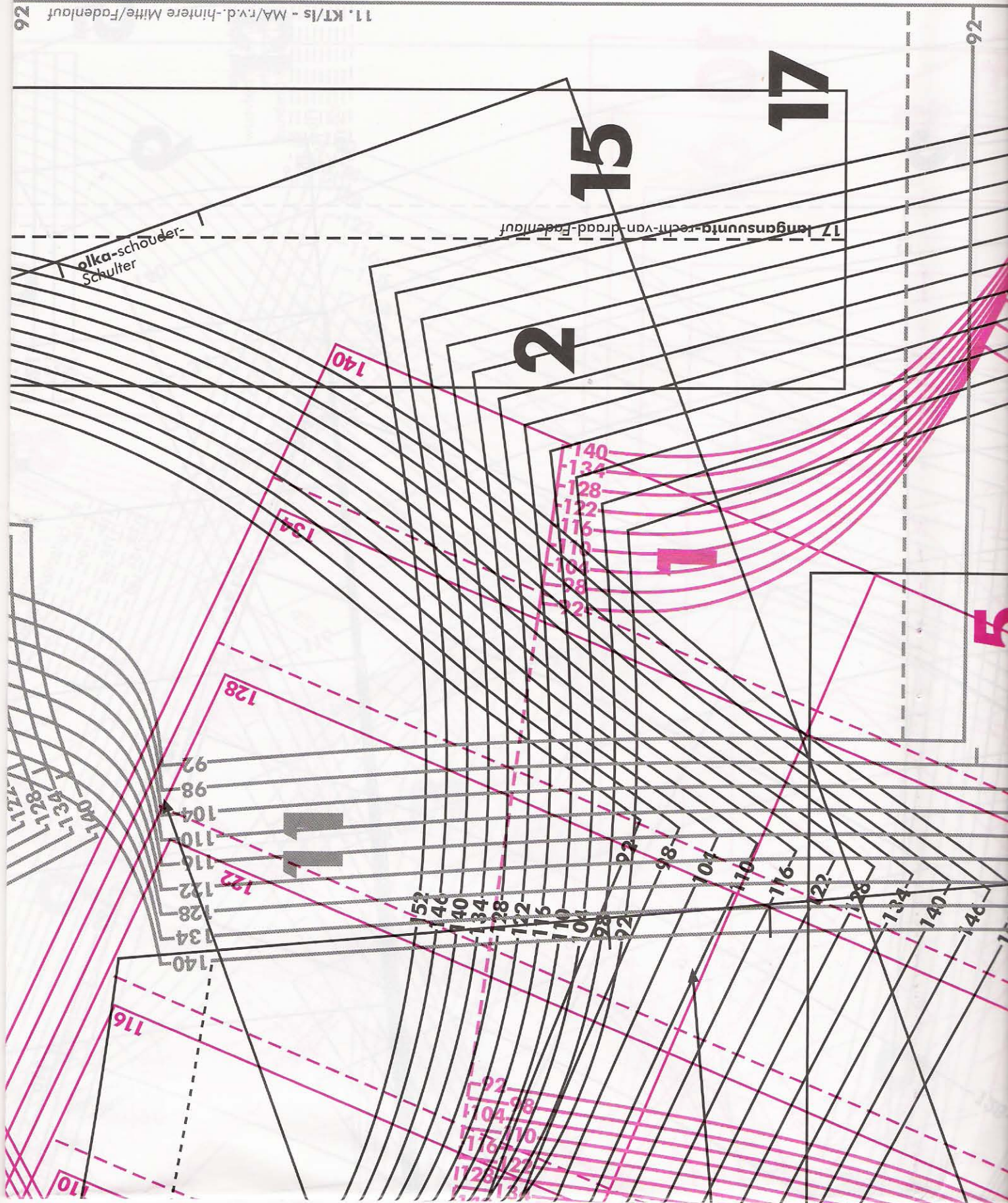
B
 4 / 2000

COPYRIGHT © STUDIO TUUMAT OY
 All patterns in OTTOBRE design magazine are protected under the
 Commonwealth Copyright Act 1968. No material may be reproduced in
 part or in whole. Commercial and industrial use is strictly prohibited.
 All rights reserved © OTTOBRE DESIGN, OULU FINLAND 2000



11. KT/ls - MA/rvd.-hindere Mitte/Fadenlauf

92





12

4 11 15 17

