

OTTOBRE
design®

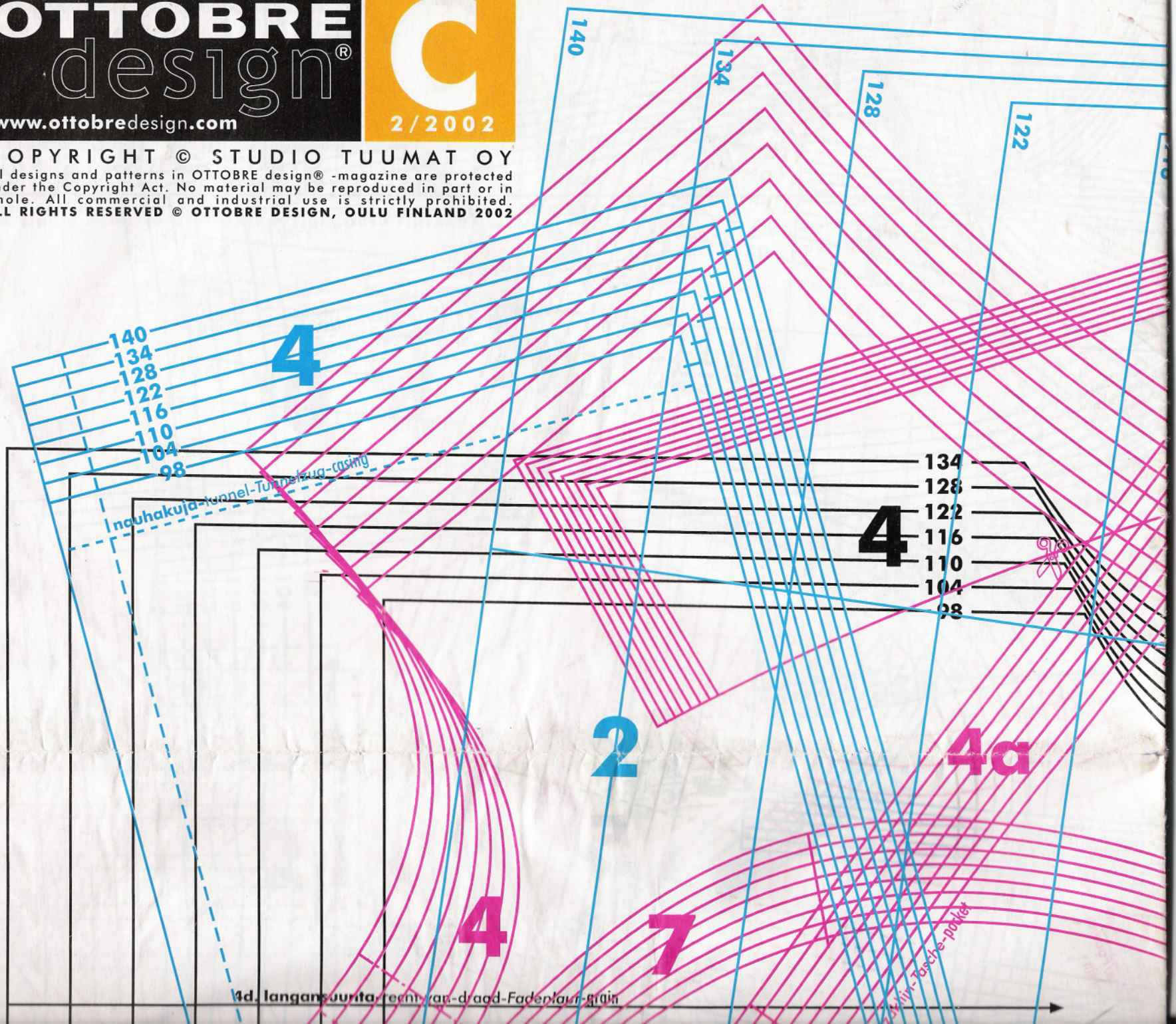
www.ottobredesign.com

C

2/2002

COPYRIGHT © STUDIO TUUMAT OY

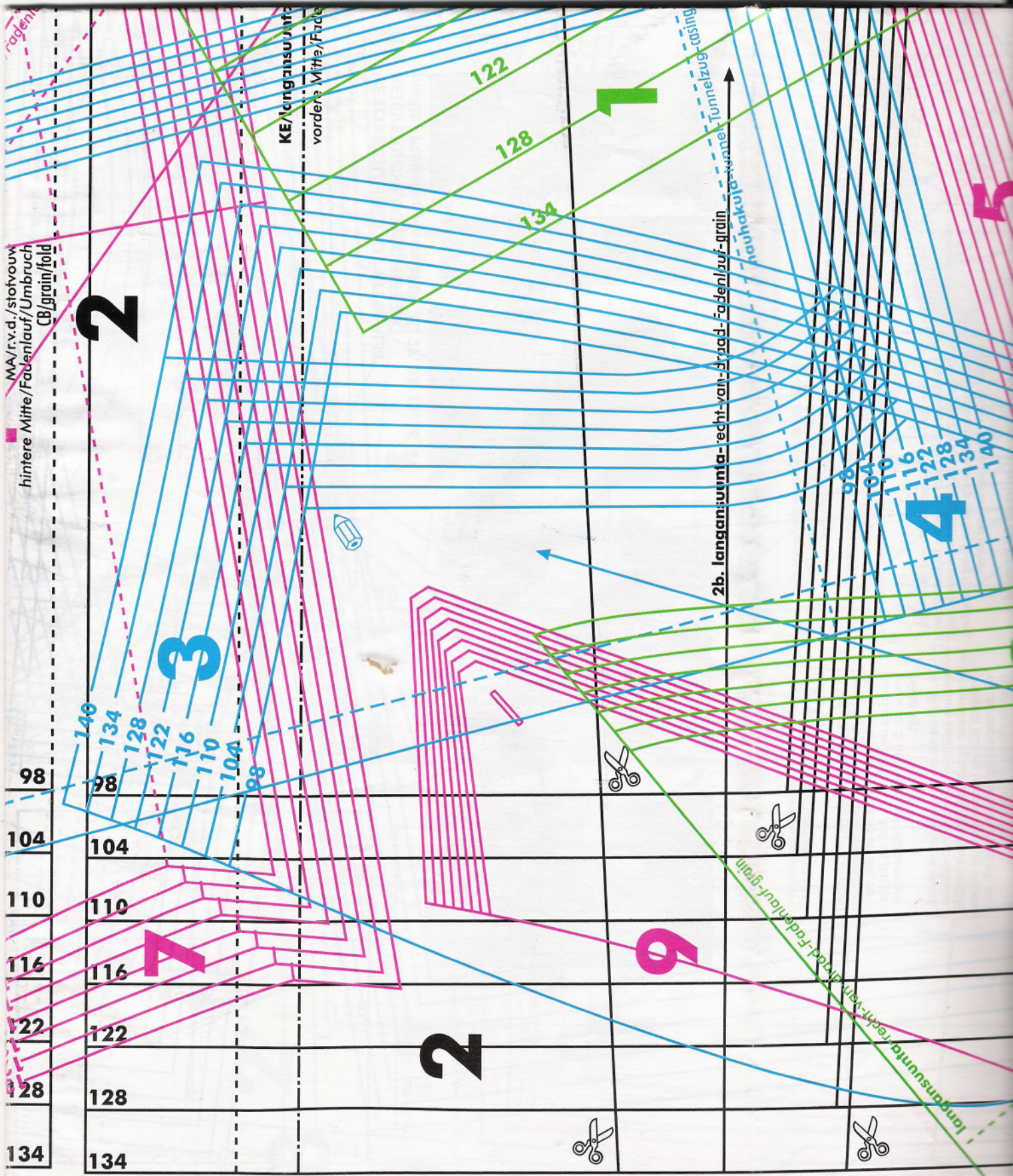
All designs and patterns in OTTOBRE design® -magazine are protected under the Copyright Act. No material may be reproduced in part or in whole. All commercial and industrial use is strictly prohibited. ALL RIGHTS RESERVED © OTTOBRE DESIGN, OULU FINLAND 2002



Fadenl...

MA/r.v.d./stofvouw
hintere Mitte/Fadenlauf/Umbruch
CB/grain/fold

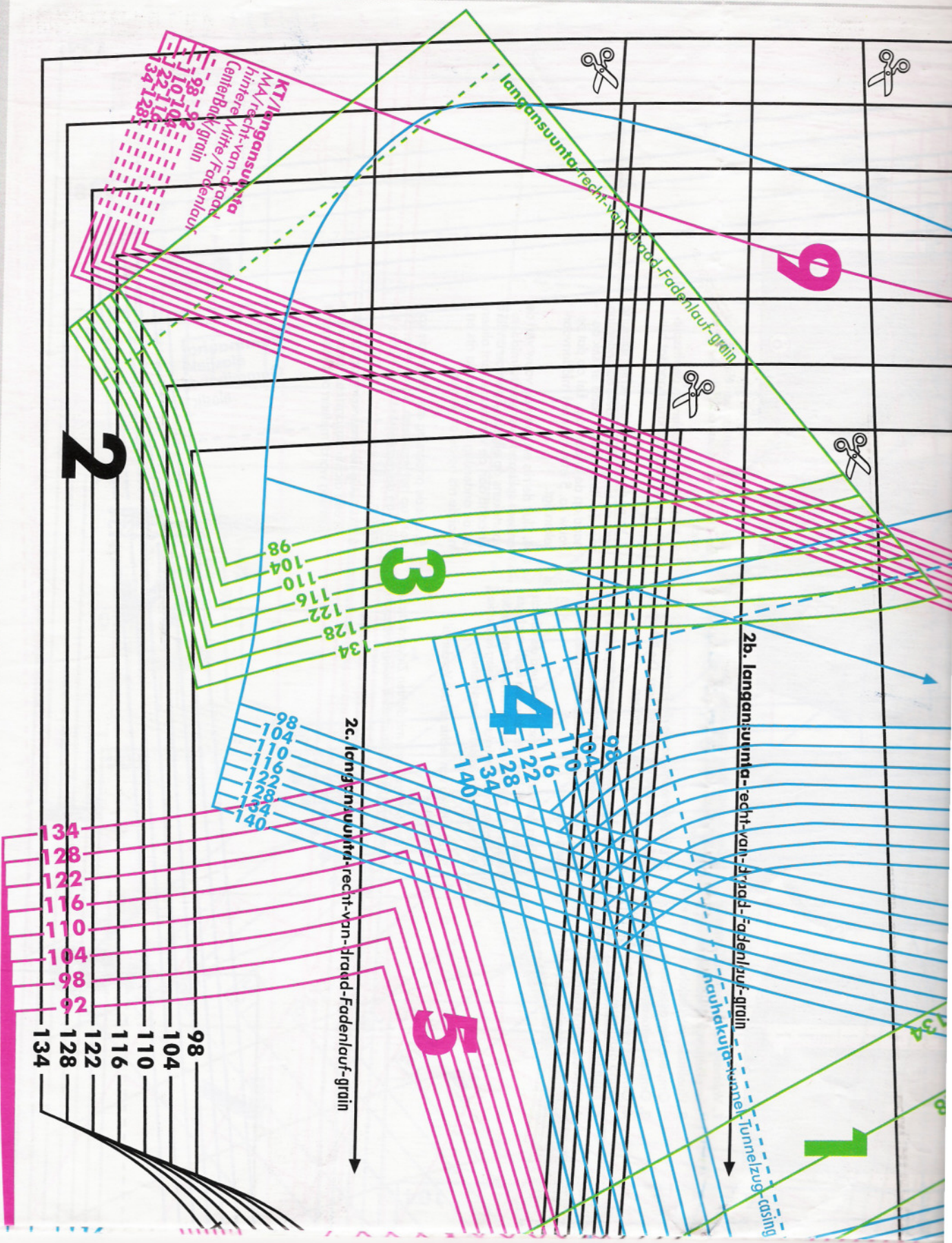
KE/langansuunfa
vordere Mitte/Fade

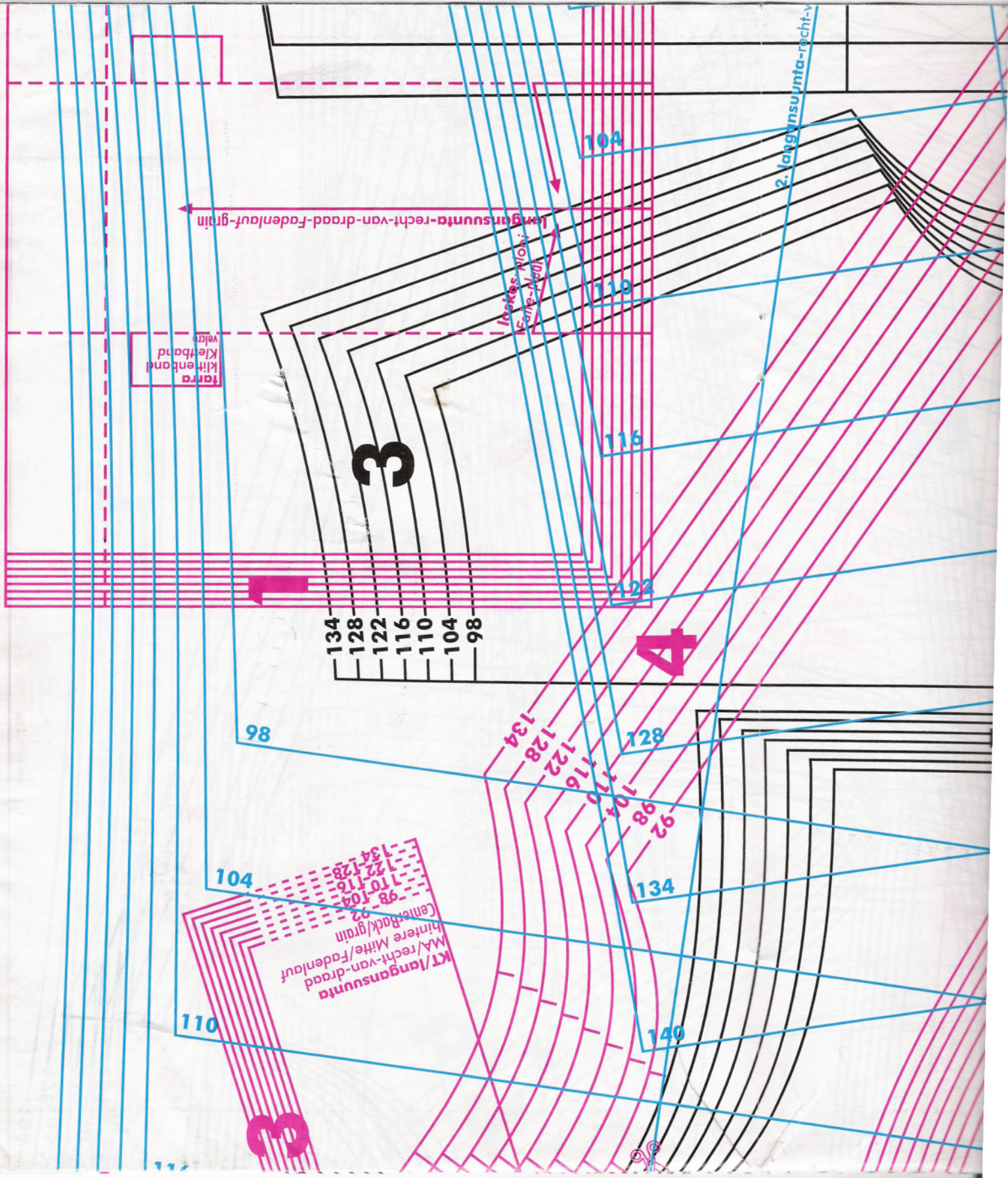


2b. langansuunfa-recht-van-brad.-fadenlauf-grain
naahakouj...wanel-Tunnelzug-casing

langansuunfa-recht-van-draad-fadenlauf-grain

9 4 4 3 3 7 4 5





langansuunta-recht-van-draad-Fadenlauf-grain

Kittband
Kittband
velen

langansuunta
Kittband
velen

2. langansuunta-recht-v

- 134
- 128
- 122
- 116
- 110
- 104
- 98

KT/langansuunta
MA/recht-van-draad
hinterer Back/grain
98-92
98-104
110-104
122-128
134-128

2. langynsuunta-recht-v

128

134

134

128

116

104

98

134

128

122

116

110

104

98

128

134

122

116

110

104

98

128

134

122

116

110

104

98

128

134

122

116

110

104

98

128

134

122

116

110

104

98

128

134

122

116

110

104

98

128

134

122

116

110

104

98

128

134

122

116

110

104

98

128

134

122

116

110

104

98

128

134

122

116

110

104

98

128

134

122

116

110

104

98

128

134

122

116

110

104

98

128

134

122

116

110

104

98

128

134

122

116

110

104

98

128

134

122

116

110

104

98

128

134

122

116

110

104

98

128

134

122

116

110

104

98

128

134

122

116

110

104

98

128

134

122

116

110

104

98

128

134

122

116

110

104

98

128

134

122

116

110

104

98

128

134

122

116

110

104

98

128

134

122

116

110

104

98

128

134

122

116

110

104

98

128

134

122

116

110

104

98

128

134

122

116

110

104

98

128

134

122

116

110

104

98

128

134

122

116

110

104

98

128

134

122

116

110

104

98

128

134

122

116

110

104

98

128

134

122

116

110

104

98

128

134

122

116

110

104

98

128

134

122

116

110

104

98

128

134

122

116

110

104

98

128

134

122

116

110

104

98

128

134

122

116

110

104

98

128

134

122

116

110

104

98

128

134

122

116

110

104

98

128

134

122

116

110

104

98

128

134

122

116

110

104

98

128

134

122

116

110

104

98

128

134

122

116

110

104

98

128

134

122

116

110

104

98

128

134

122

116

110

104

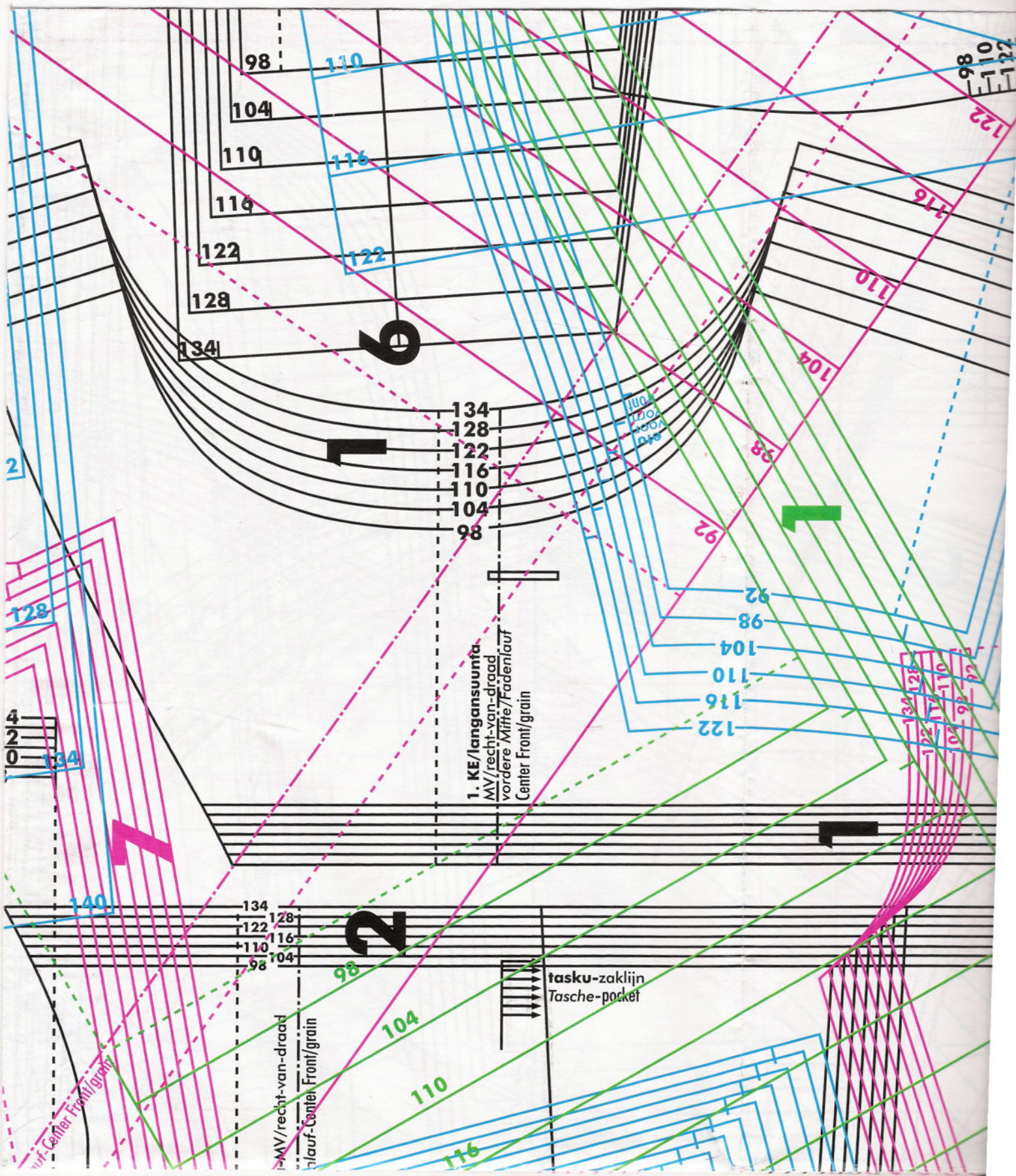
98

128

134

122

11



98

110

104

110

116

116

122

122

128

134

1

134

128

122

116

110

104

98

1. KE/langansuunta
 MV/recht-van-draad
 vordere Mitfe/Fadenlauf
 Center Front/grain

2

128

4

2

0

134

140

134

128

122

116

110

104

98

2

MV/recht-van-draad
 Fadenlauf
 Center Front/grain

tasku-zaklijn
 Tasche-pocket

104

110

116

98

110

122

122

116

110

104

98

92

92

98

104

110

116

122

122

116

110

104

98

92

134

128

122

116

110

104

98

92

1

1

1

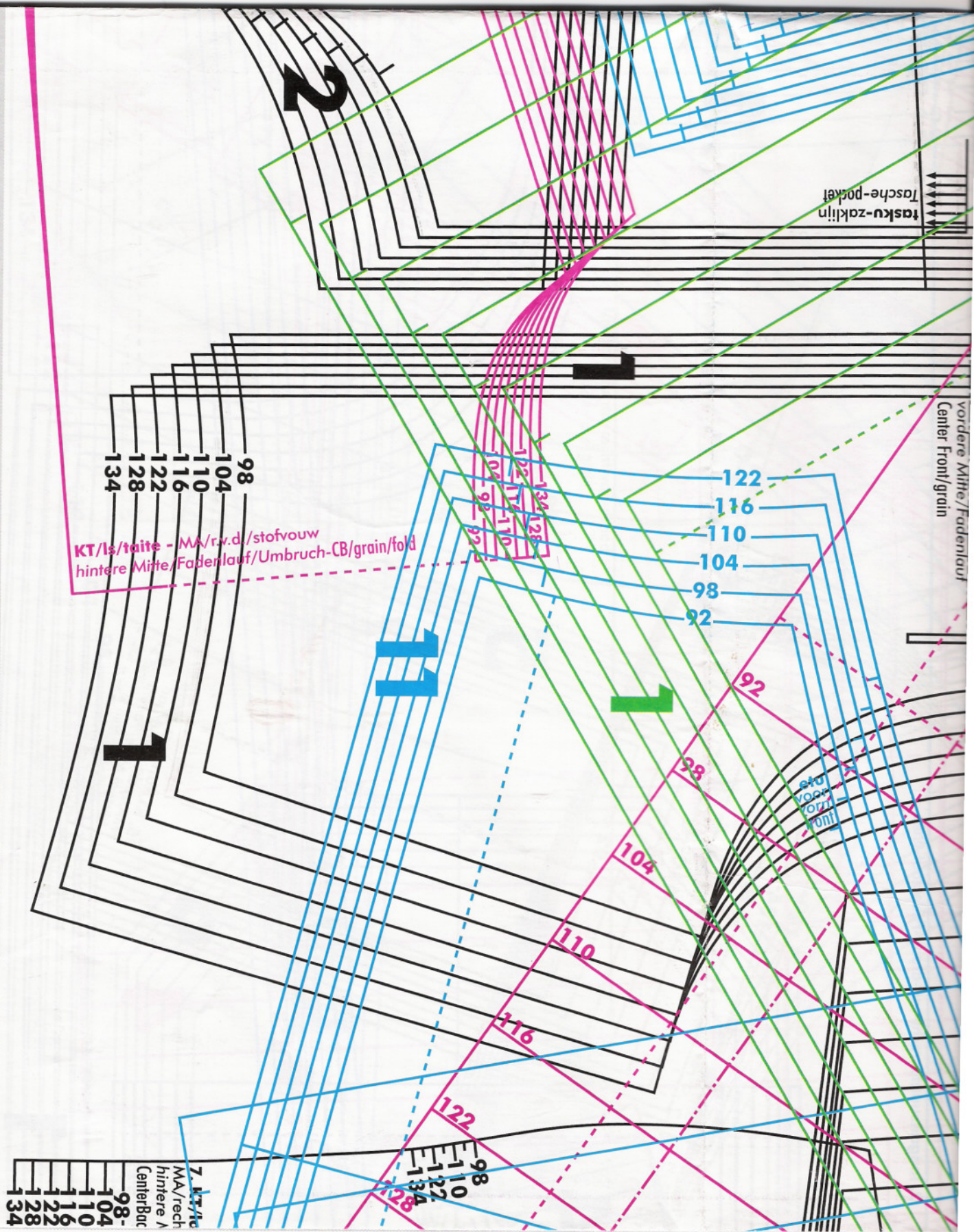
MV/recht-van-draad
 Fadenlauf
 Center Front/grain

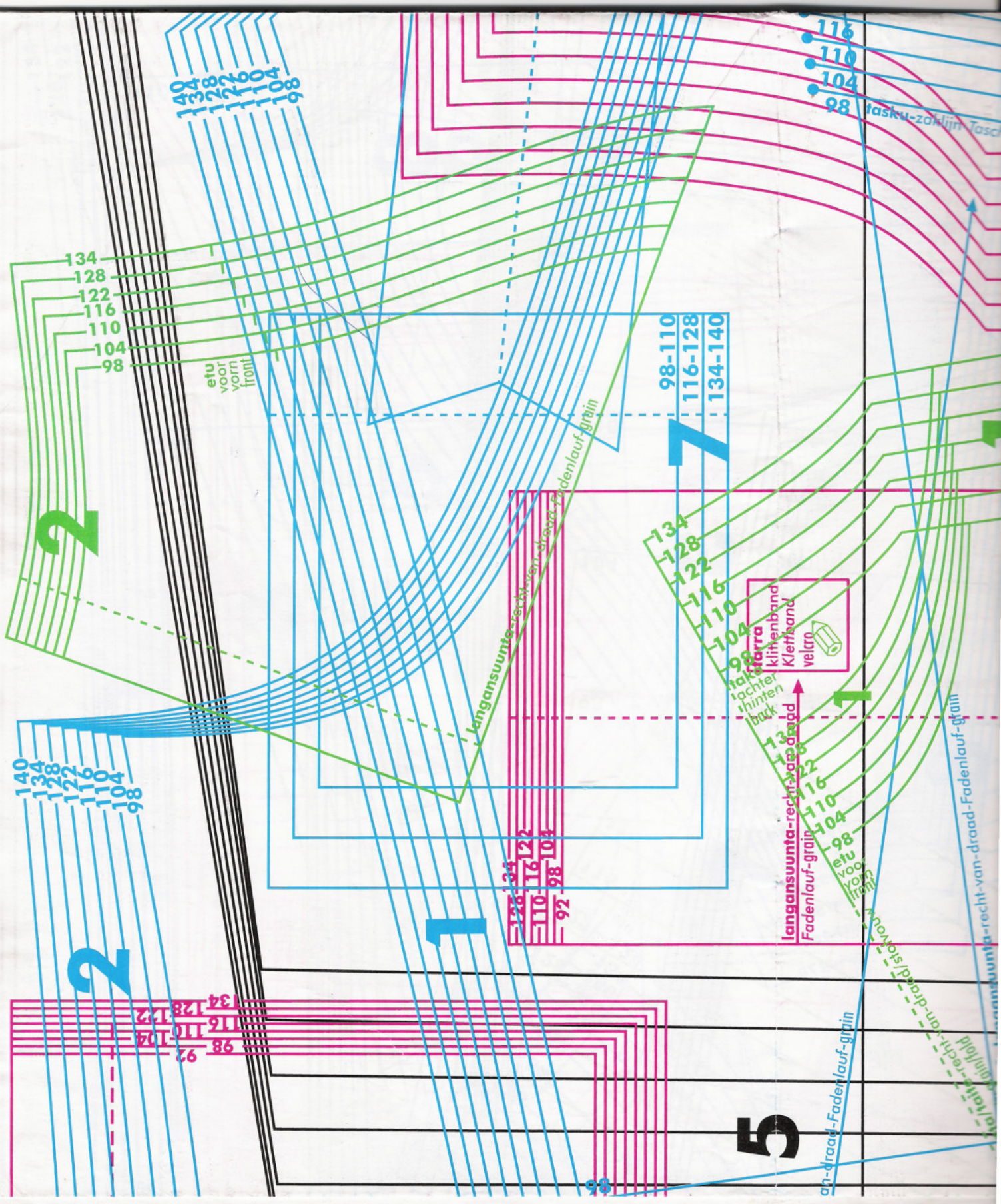
3

2

1 1 1 1

3





140
134
128
122
116
110
104
98

etuvuori
voori
vorni
fronti

116
110
104
98 tasku-zaklijn Tasch

98-110
116-128
134-140

langansuunta-recht-van-draad
Fadenlauf-grain

98-110
116-128
134-140
haken
kinnend
Kleefband
velcro

langansuunta-recht-van-draad
Fadenlauf-grain

140
134
128
122
116
110
104
98

134
128
122
116
110
104
98

134
128
122
116
110
104
98
92

an-draad-Fadenlauf-grain

langansuunta-recht-van-draad-Fadenlauf-grain
Fadenlauf-grain

2

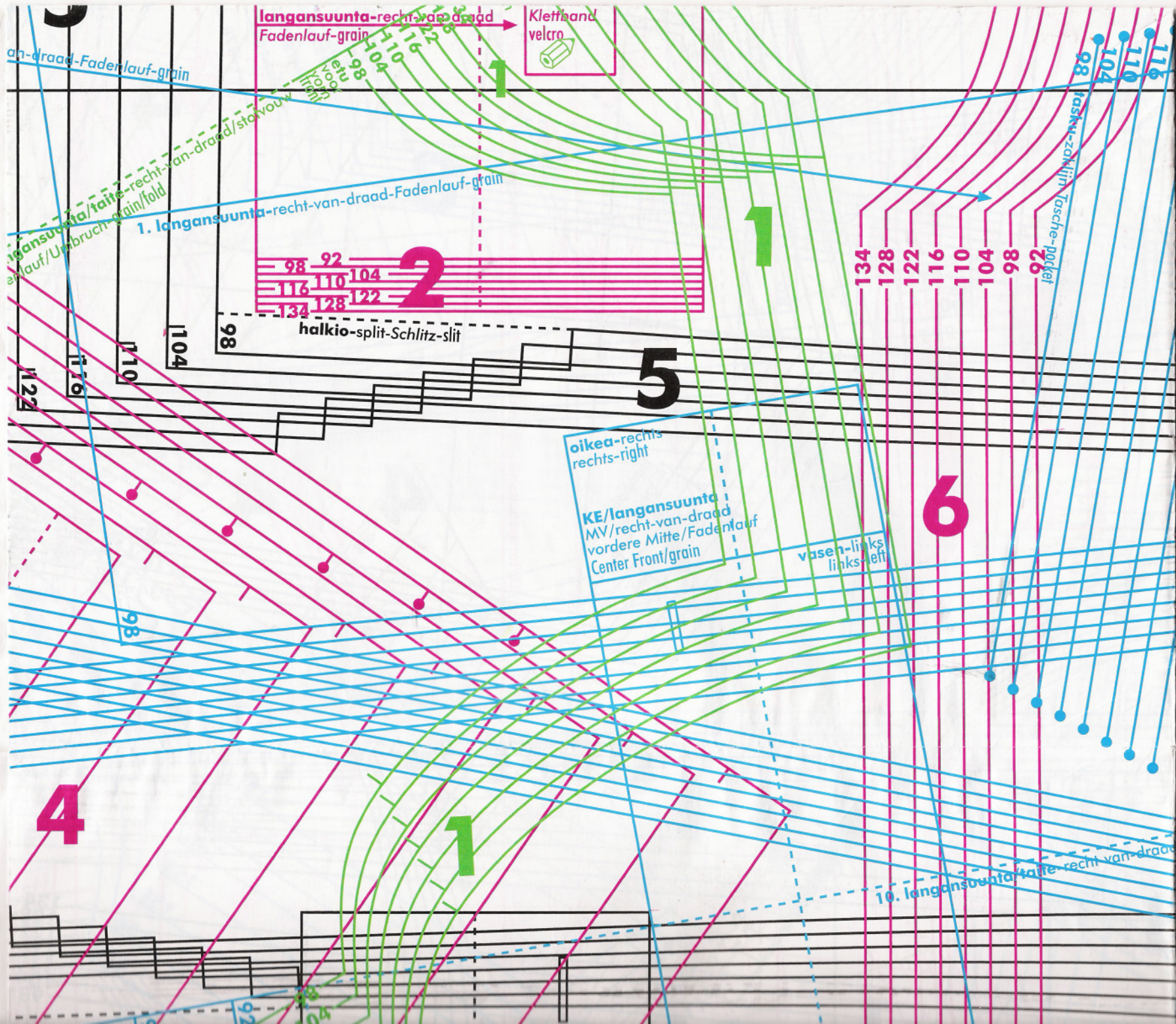
1

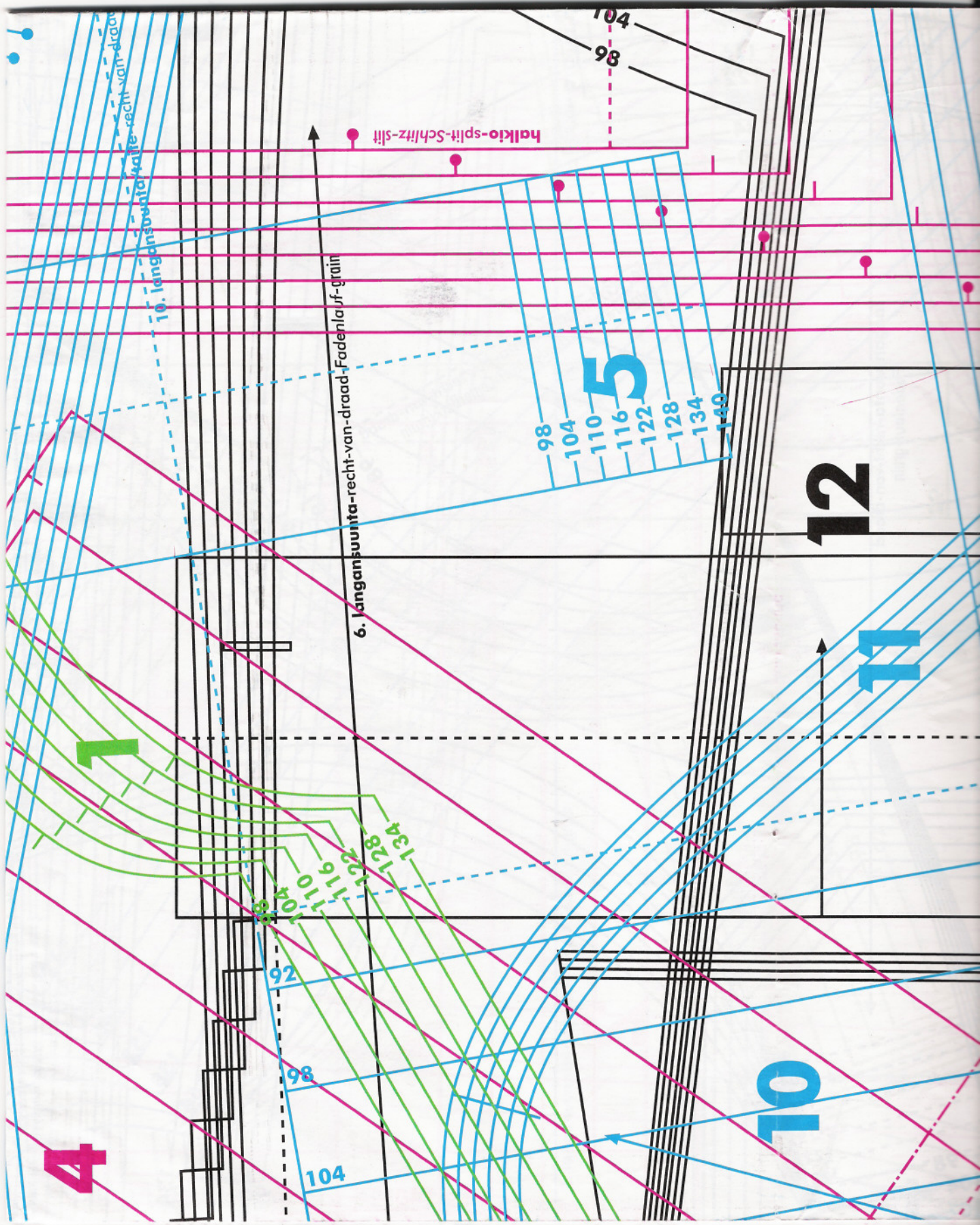
1

2

5

98





4

1

5

12

11

10

6. langansuunita-recht-van-draad-Fadenlaf-grain

10. langansuunita-kalle-recht-van-draad

halkio-splitt-Schitzz-sliit

104

98

92

98

104

110

116

122

128

134

98

104

110

116

122

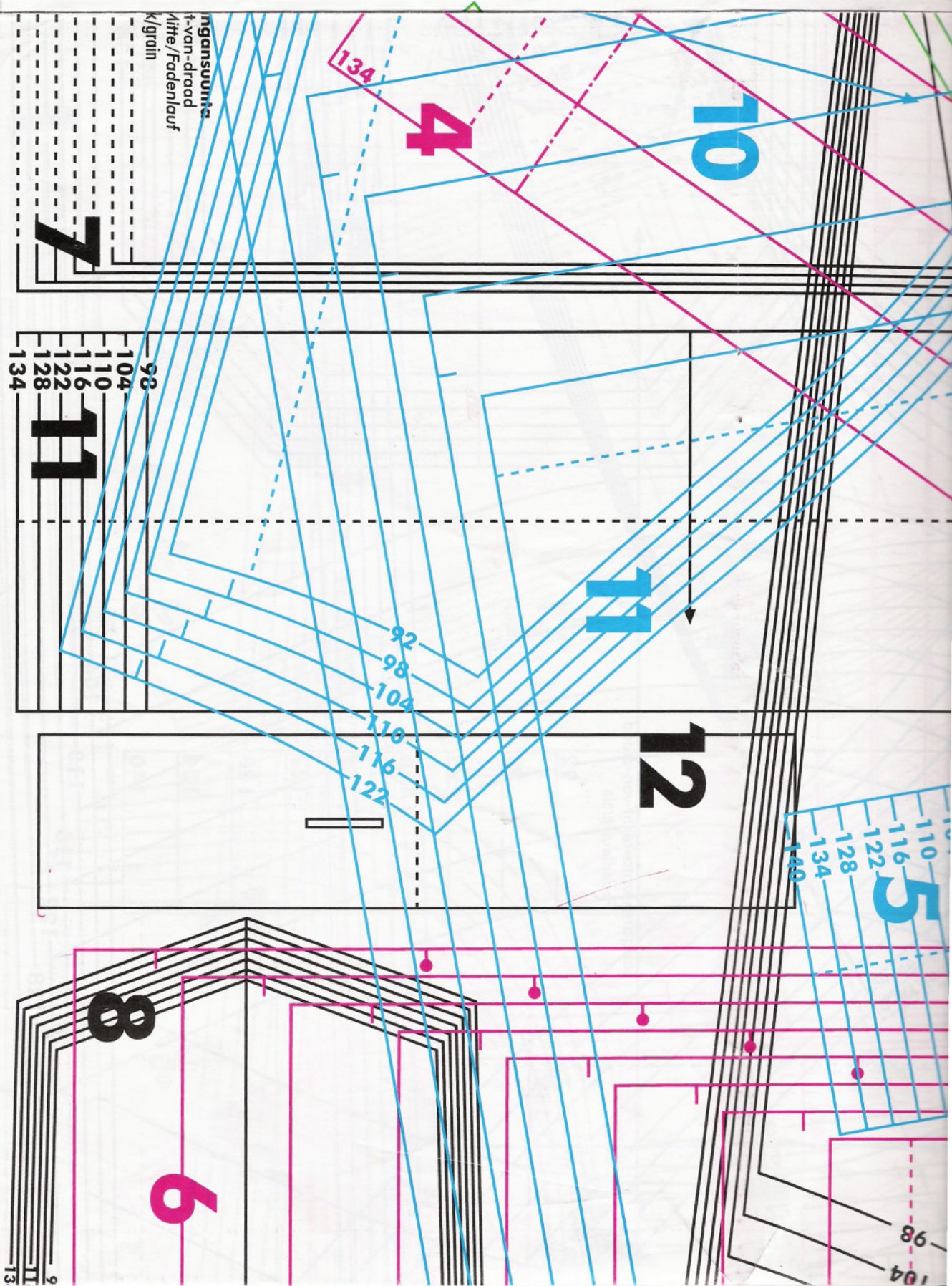
128

134

140

104

98



72

112

212715

8

6

KT/Ingangsuntia
 MA/recht-van-draad
 hint.Mitte/Fadenlauf
 CenterBack/grain
 92
 104
 110
 116
 122
 128
 134

8

92
 104
 116
 128

vasen-links-links-left

oiked-rechts-rechts-right

6

laskos
 plooi
 Falte
 pleat

vetoketju-rits-Reißverschluss-Zipper

5

110-134
 92-104
 98
 104
 110
 116
 122
 128
 134

Top
 Top
 Top

140
 134
 128
 122
 116
 110
 104
 98

8

2

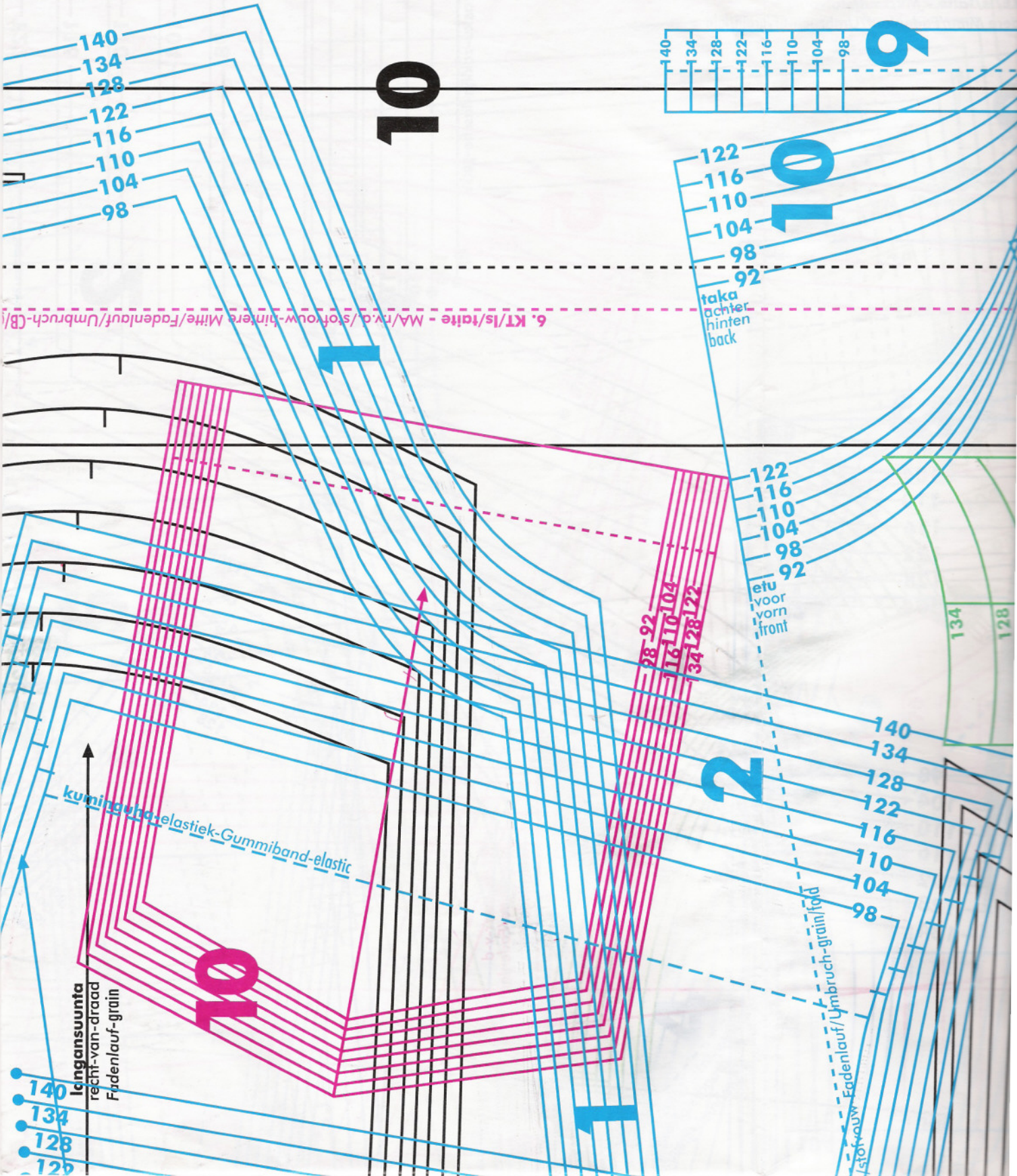
Ingangsuntia
 recht-van-draad
 Fadenlauf-grain

140
 134
 128
 122

kuningvraag-relas

e/Fadenlauf/Umbruch-CB/grain/fold

140
 134
 128
 122
 116
 110
 104
 98



10

9

10

taka
achter
hinten
back

122
116
110
104
98
92
etu
voor
vorn
front

2

kuningan-elastiek-Gummiband-elastic

10

langansuunta
recht-van-draad
Fadenlauf-grain

stofnouw
Fadenlauf/Umbruch-grain/foed

140
134
128
122
116
110
104
98

140
134
128
122
116
110
104
98

140
134
128
120

6. KT/ls/taite - MA/n.v.d./stofnouw-hintere Mitte/Fadenlauf/Umbruch-(B/)

134
128

10 9

22
16
10
104
98
92
tu
oor
orn
ront

4

6

10

140
134
128
122
116
110
104
98

stof-uw
Eadenlauf / ymbruch-grain / fod

6

134
128
122
116
110

taske-zaklinje
Tasche-pocket

92

98

104

110

134
128
122
116
110
104
98

92

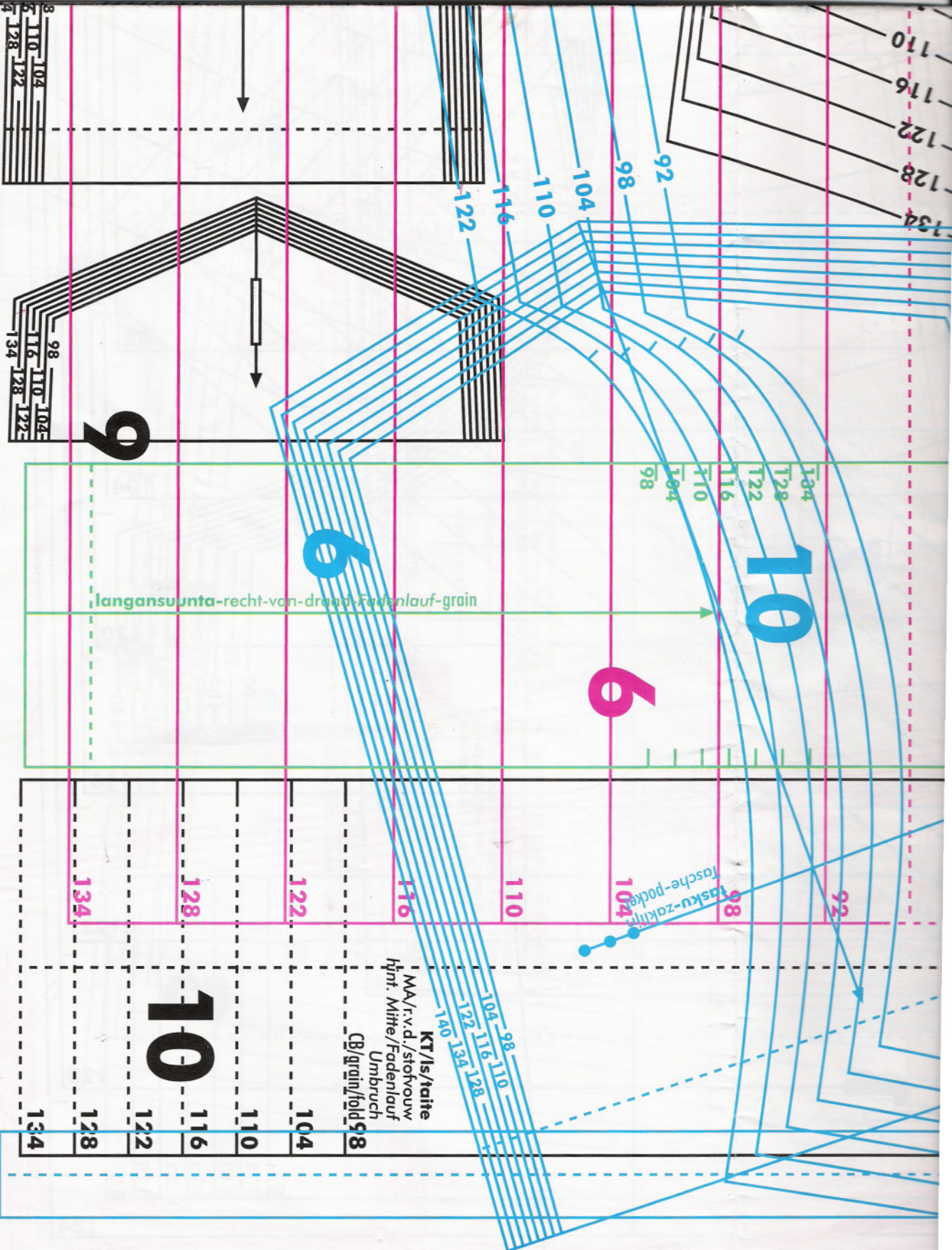
98

104

110

116

104
98
110



610 8 9 5 6 10 4 8 1 10 9