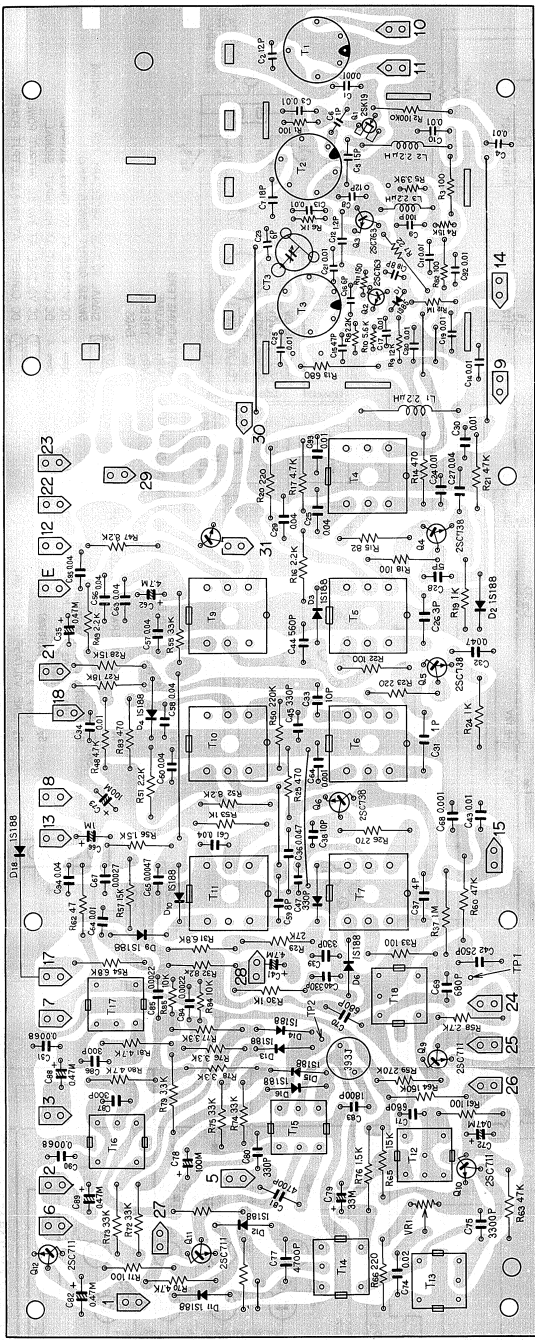
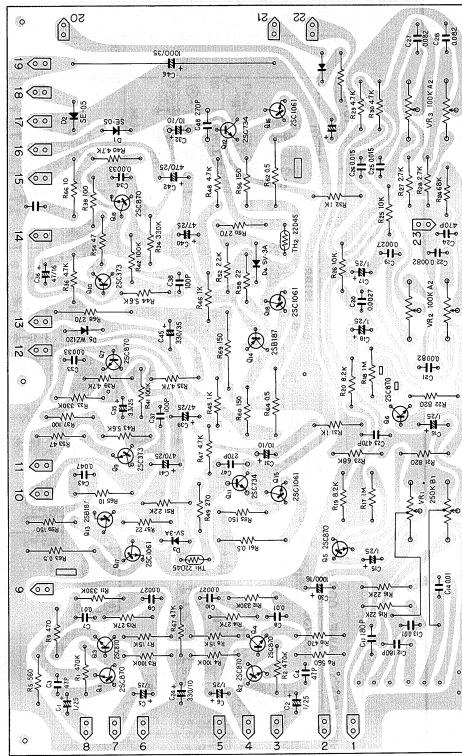


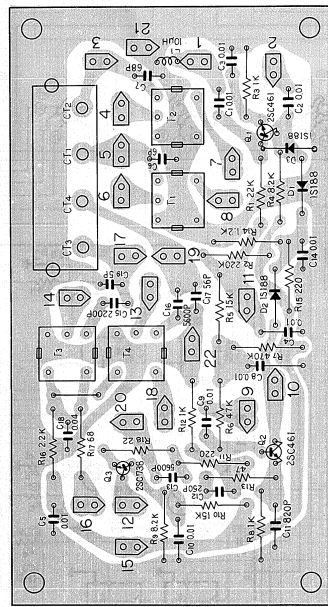
Tuner ass'y AWE-006



AF amp ass'y W36-007



AM front end ass'y AWA-001

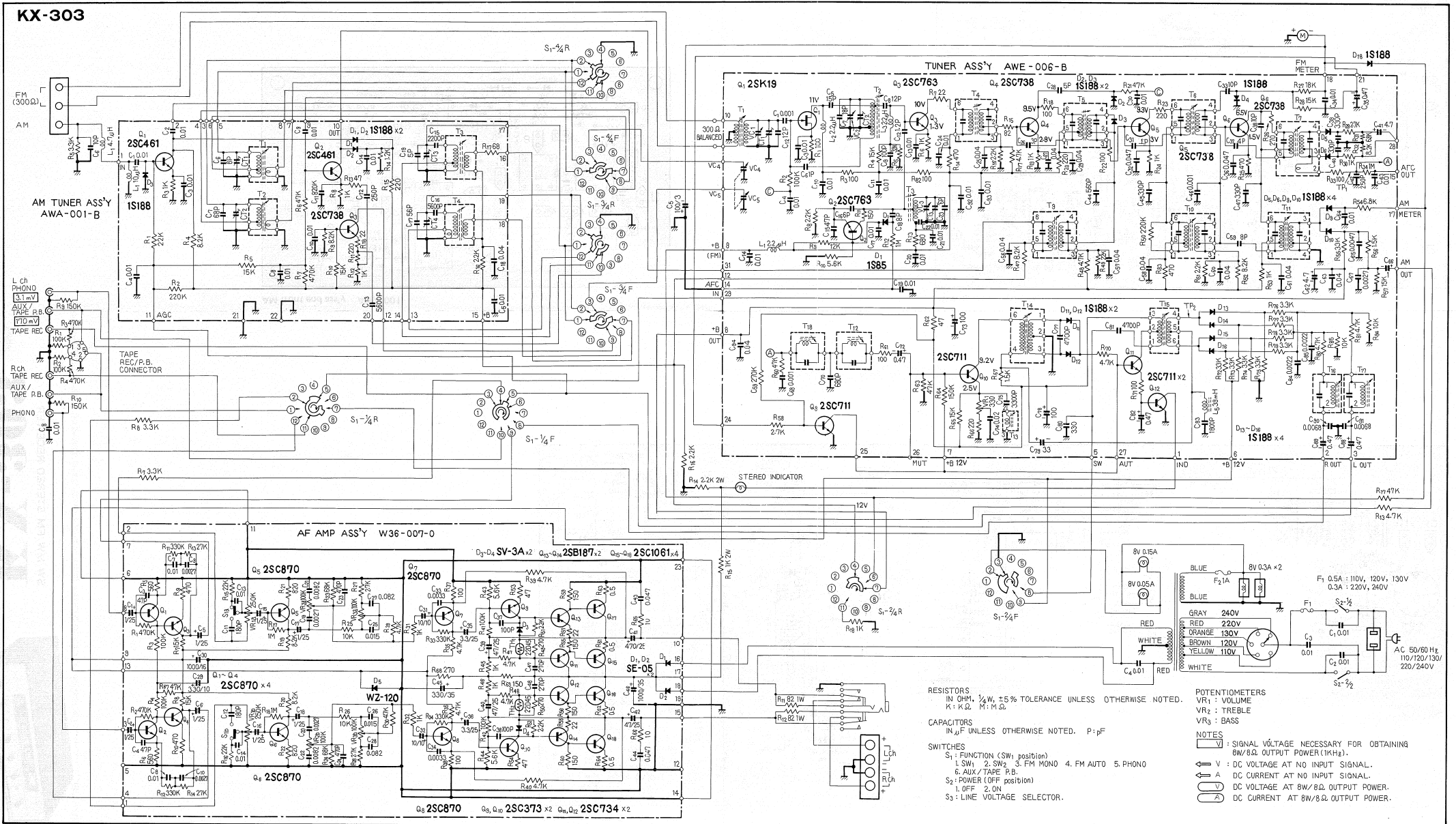


SW/MW/FM STEREO RECEIVER

KX-303

FSAW

KX-303



RESISTORS
IN OHM, 1/2 W, ±5% TOLERANCE UNLESS OTHERWISE NOTED.
K: K.Ω. M: M.Ω.

CAPACITORS
IN μF UNLESS OTHERWISE NOTED. P: pF

SWITCHES
S₁: FUNCTION (SW₁ POSITION)
1. SW₁ 2. SW₂ 3. FM MONO 4. FM AUTO 5. PHONO
6. AUX / TAPE P.B.
S₂: POWER (OFF POSITION)
1. OFF 2. ON
S₃: LINE VOLTAGE SELECTOR.

POTENTIOMETERS
VR₁: VOLUME
VR₂: TREBLE
VR₃: BASS

NOTES

- ⊖: SIGNAL VOLTAGE NECESSARY FOR OBTAINING 8W/8Ω OUTPUT POWER (14MHz).
- ⊖: DC VOLTAGE AT NO INPUT SIGNAL.
- ⊖: DC CURRENT AT NO INPUT SIGNAL.
- ⊖: DC VOLTAGE AT 8W/8Ω OUTPUT POWER.
- ⊖: DC CURRENT AT 8W/8Ω OUTPUT POWER.

