

A full-page advertisement for Huit 8 Paris lingerie. A blonde woman with blue eyes is the central figure, wearing a black lace and floral-patterned bra and matching briefs. She is holding a thick, twisted red rope that loops around her body. The background is a plain, light grey. In the top right corner, there is a red diagonal line followed by the text 'LINGERIE AW15 COLLECTION' and 'MAY-NOVEMBER 2015'. In the bottom right corner, the brand name 'huit 8' is written in a large, elegant serif font, with 'PARIS' in a smaller font underneath. Below that, the words 'TRADE WORKBOOK' are written in a clean, sans-serif font.

LINGERIE AW15 COLLECTION  
MAY-NOVEMBER 2015

**huit 8**  
PARIS

TRADE WORKBOOK



# BREAK FREE

It's time to be free. To explore, to change, to reinvent. Be where comfort and creativity meet. Where beauty looks forward in subtle shapes and avant garde design. Step out of the ordinary, and into the new lingerie and swimwear collection from Huit.



## CONTENTS

---

|                         |             |
|-------------------------|-------------|
| À LA FOLIE              | 30          |
| ARPÈGE                  | 8-9         |
| AVEC TOI                | 28          |
| DE L'AIR                | 10          |
| EN CAVALE               | 22-23       |
| EN SCÈNE                | 11          |
| ENCHANTÉE               | 18-19       |
| ENVOÛTANTE              | 14-15       |
| GRAND JEU               | 16-17       |
| GRAND SOIR              | 21          |
| NOUVEL ÉMOI             | 24-25-26-27 |
| PRETTY RETRO            | 20          |
| PURE COLOR              | 12-13       |
| SANS DÉTOUR             | 30          |
| SWEET COTON             | 6-7         |
| SIZES WITHOUT SURPRISES | 31          |

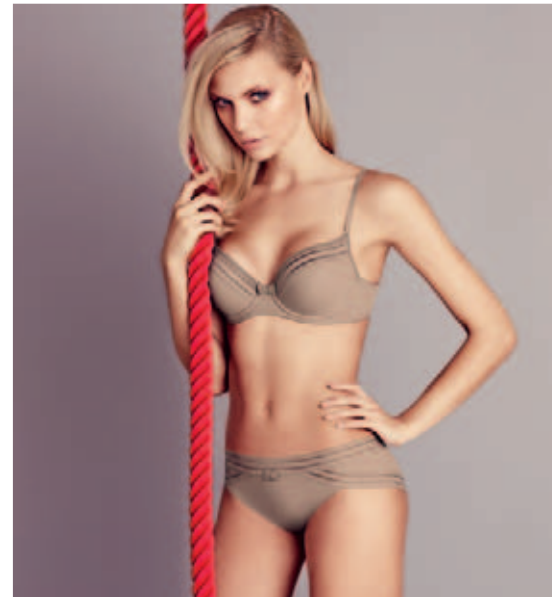
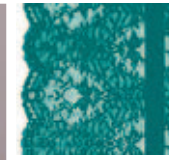
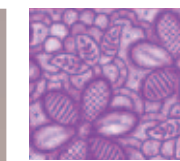
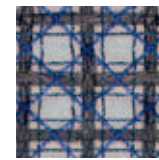
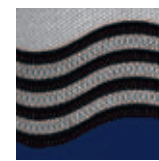
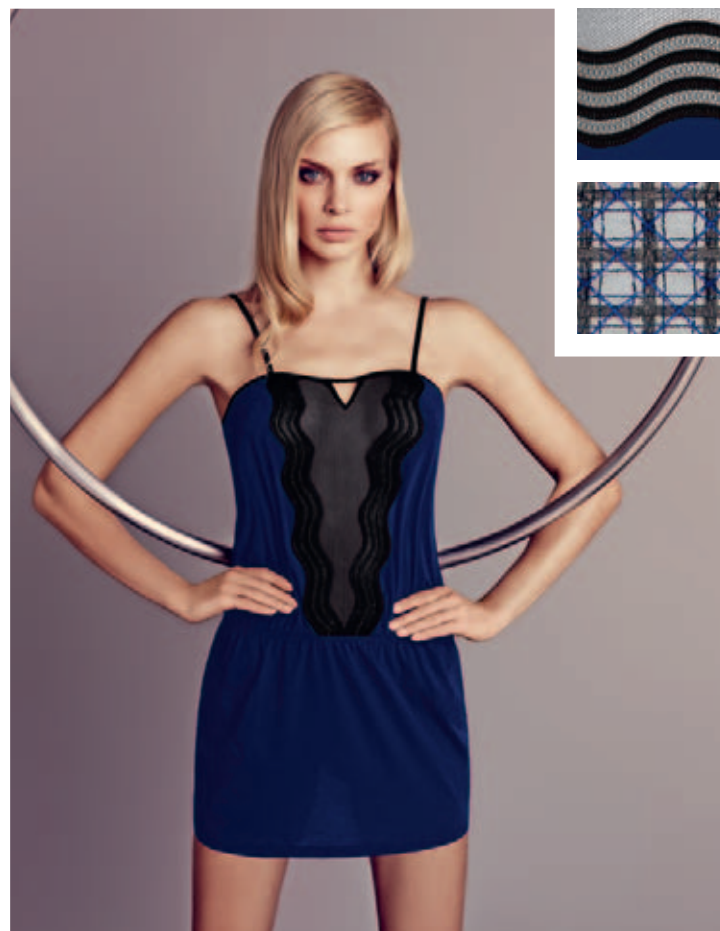
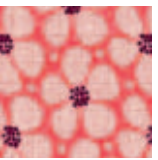
## TRENDS

---

A new lingerie collection that exudes refinement and elegance. Exclusively designed delicate fabrics, play on cut-outs and delicious details adorn the Huit woman's body. Floral guipures and embroidery with a winter garden feel (Pretty Retro, En Scène, De l'Air) mix with embroidery given graphic and sensual lines (En Cavale). For the evening, Huit goes all out and weaves silver lurex threads into its 'checked' embroidery to dazzle (Grand Soir). Huit doesn't overlook dressing up its 'everyday' ranges: cotton bordered with a graphic band (Sweet Coton), Lycra® knit marked with glamorous Leavers lace signed Huit (Avec Toi). Chic and intense colourways (Peacot, Plum, Coronet blue, Fanfare, American Beauty) pair with bright colourways (UV, Cherry, Flamant, Citronnelle) for a highly colourful winter 2015!

Une nouvelle collection lingerie placée sous le signe de l'élégance et du raffinement. Matières délicates au design exclusif, jeux de découpes et détails craquants viennent sublimer la femme Huit. Des broderies et guipures florales déclinées dans une ambiance jardin d'hiver (Pretty Retro, En Scène, De l'Air) côtoient des broderies aux lignes graphiques et sensuelles (En Cavale). Pour le Soir, Huit sort le grand jeu et pare sa broderie 'carreaux' de fils lurex argentés pour briller de mille feux (Grand Soir). Huit n'oublie pas d'habiller ses lignes quotidiennes : coton rehaussé d'une bande graphique (Sweet Coton), maille Lycra® soulignée d'une dentelle Leavers glamour siglée Huit (Avec Toi). Les coloris chics et intenses (Peacot, Plum, Coronet blue, Fanfare, American Beauty) se marient aux coloris lumineux (UV, Cherry, Flamant, Citronnelle) pour un hiver 2015 riche en couleurs !

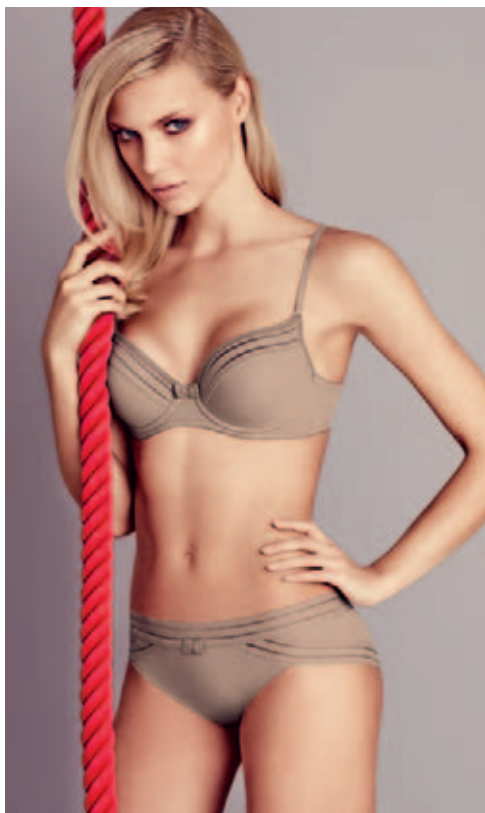




# SWEET COTON

NEW

Comfort and purity for a range in stretch cotton outlined with an elasticated graphic band.



2049  
SWEET GALET  
(New continuity)

Available



Price

**B1 - SOFT BRA**

|        |             |
|--------|-------------|
| UK     | 30-36 A.B.C |
| EU     | 65-80 A.B.C |
| FR     | 80-95 A.B.C |
| AUS/NZ | 8-14 A.B.C  |
| USA    | 30-36 A.B.C |
| JP     | 65-80 B.C.D |

|             |       |       |
|-------------|-------|-------|
| EU          | A-B   | C     |
| Strap Width | 10 mm | 12 mm |

- Soft and comfortable stretch cotton (80% cotton - 20% elasthanne)
- Soft bra
- Moulded cups for invisibility
- Comfortable and natural-looking bust

- Douceur et confort du coton stretch (80% coton - 20% elasthanne)
- Soutien-gorge sans armatures
- Bonnets moulés pour l'invisibilité
- Confort et poitrine naturelle



Price

**AO - FULL-CUP BRA**

|        |                |           |
|--------|----------------|-----------|
| UK     | 32-38 B.C.D.DD | 32-36 E   |
| EU     | 70-85 B.C.D.E  | 70-80 F   |
| FR     | 85-100 B.C.D.E | 85-95 F   |
| AUS/NZ | 10-16 B.C.D.DD | 10-14 E   |
| USA    | 32-38 B.C.D.DD | 32-36 DDD |
| JP     | 70-85 C.D.E.F  | 70-80 G   |

|             |       |       |       |
|-------------|-------|-------|-------|
| EU          | B     | C     | D-E-F |
| Strap Width | 10 mm | 12 mm | 15 mm |

- Soft and comfortable stretch cotton (80% cotton - 20% elasthanne)
- Underwired bra
- Full-cup shape, more coverage
- Moulded cups for invisibility
- Support up to F cup (EU)

- Douceur et confort du coton stretch (80% coton - 20% elasthanne)
- Soutien-gorge avec armatures
- Forme balconnet plus couvrante
- Bonnets moulés pour l'invisibilité
- Maintien jusqu'au bonnet F (EU)



Price

**A8 - MAGIC AIR**

|        |               |
|--------|---------------|
| UK     | 32-36 A.B.C.D |
| EU     | 70-80 A.B.C.D |
| FR     | 85-95 A.B.C.D |
| AUS/NZ | 10-14 A.B.C.D |
| USA    | 32-36 A.B.C.D |
| JP     | 70-80 B.C.D.E |

|             |       |       |
|-------------|-------|-------|
| EU          | A-B   | C-D   |
| Strap Width | 10 mm | 12 mm |

- Soft and comfortable stretch cotton (80% cotton - 20% elasthanne)
- Padded underwired bra
- Moulded cups for invisibility
- Removable AIR pads for a push up effect
- Detachable straps

- Douceur et confort du coton stretch (80% coton - 20% elasthanne)
- Soutien-gorge coques avec armatures
- Bonnets moulés pour l'invisibilité
- Coussinets AIR amovibles pour un effet push up
- Bretelles détachables



Price

**J10 - STRING**

XS / S / M / L / XL



Price

**K10 - BOXER SHORTS**

XS / S / M / L / XL



Price

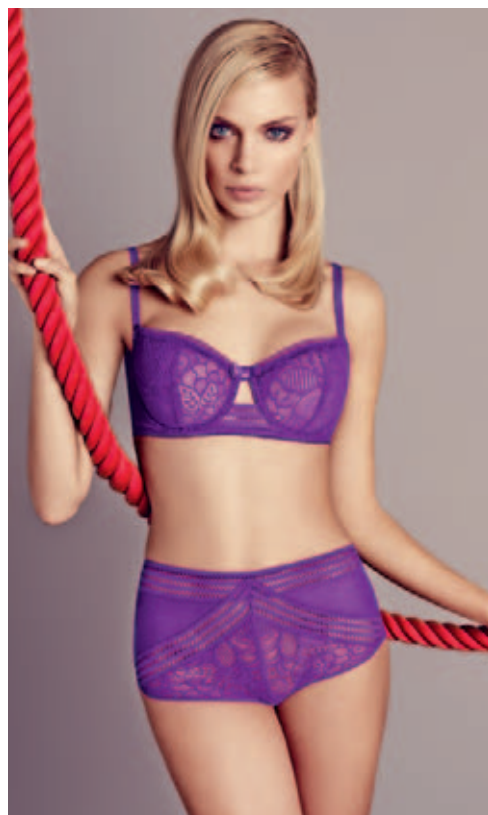
**J20 - BRIEF**

XS / S / M / L / XL

## Notes / Order List

# ARPÈGE

Delicate Leavers lace with an exclusive Huit motif, combined with a soft cotton polyamide tulle offering absolute comfort.



5065  
UV  
(Fashion)



3000  
NOIR  
(Continuity)



2003  
IVOIRE  
(Continuity)

Available



Price

## B1 - SOFT BRA

|        |             |
|--------|-------------|
| UK     | 30-36 A.B.C |
| EU     | 65-80 A.B.C |
| FR     | 80-95 A.B.C |
| AUS/NZ | 8-14 A.B.C  |
| USA    | 30-36 A.B.C |
| JP     | 65-80 B.C.D |

|             |      |       |
|-------------|------|-------|
| EU          | A.B  | C     |
| Strap Width | 5 mm | 10 mm |

- Refined Leavers lace
- Soft bra
- Comfortable and natural-looking bust

- Dentelle Leavers raffinée
- Soutien-gorge sans armatures
- Confort et poitrine naturelle



Price

## C4 - HALF-CUP BRA

|        |                    |
|--------|--------------------|
| UK     | 32-38 B.C.D.DD.E   |
| EU     | 70-85 B.C.D.E.F    |
| FR     | 85-100 B.C.D.E.F   |
| AUS/NZ | 10-16 B.C.D.DD.E   |
| USA    | 32-38 B.C.D.DD.DDD |
| JP     | 70-85 C.D.E.F.G    |

|             |      |       |       |
|-------------|------|-------|-------|
| EU          | B    | C.D   | E.F   |
| Strap Width | 5 mm | 10 mm | 15 mm |

- Refined Leavers lace
- Underwired bra
- Glamorous half-cup bra shape
- Support up to F cup (EU)

- Dentelle Leavers raffinée
- Soutien-gorge avec armatures
- Forme corbeille glamour
- Maintien jusqu'au bonnet F (EU)



Price

## C6 - HALF-CUP BRA WITH FOAM

|        |                |           |
|--------|----------------|-----------|
| UK     | 30-38 B.C.D.DD | 32-36 E   |
| EU     | 65-85 B.C.D.E  | 70-80 F   |
| FR     | 80-100 B.C.D.E | 85-95 F   |
| AUS/NZ | 8-16 B.C.D.DD  | 10-14 E   |
| USA    | 30-38 B.C.D.DD | 32-36 DDD |
| JP     | 65-85 C.D.E.F  | 70-80 G   |

|             |      |       |       |
|-------------|------|-------|-------|
| EU          | B    | C.D   | E.F   |
| Strap Width | 5 mm | 10 mm | 15 mm |

- Refined Leavers lace
- Underwired bra
- Half-cup bra with foam support, offering a nice rounded breast
- Support up to F cup (EU)

- Dentelle Leavers raffinée
- Soutien-gorge avec armatures
- Forme corbeille avec renfort mousse pour une poitrine parfaitement galbée
- Maintien jusqu'au bonnet F (EU)



# ARPÈGE



Price

## A8 - MAGIC AIR

|        |                  |
|--------|------------------|
| UK     | 30-36 A.B.C.D.DD |
| EU     | 65-80 A.B.C.D.E  |
| FR     | 80-95 A.B.C.D.E  |
| AUS/NZ | 8-14 A.B.C.D.DD  |
| USA    | 30-36 A.B.C.D.DD |
| JP     | 65-80 B.C.D.E.F  |

|             |      |       |
|-------------|------|-------|
| EU          | A.B  | C.D.E |
| Strap Width | 5 mm | 10 mm |

- Refined Leavers lace
- Padded underwired bra
- Removable AIR pads for a push up effect
- Only available in UV colour

- Dentelle Leavers raffinée
- Soutien-gorge coques avec armatures
- Coussinets AIR amovibles pour un effet push up
- Existe uniquement en coloris UV



Price

## E8 - MAGIC AIR MINI LONG-LINE

|        |                  |
|--------|------------------|
| UK     | 30-36 A.B.C.D.DD |
| EU     | 65-80 A.B.C.D.E  |
| FR     | 80-95 A.B.C.D.E  |
| AUS/NZ | 8-14 A.B.C.D.DD  |
| USA    | 30-36 A.B.C.D.DD |
| JP     | 65-80 B.C.D.E.F  |

|             |       |       |
|-------------|-------|-------|
| EU          | A.B.C | D.E   |
| Strap Width | 5 mm  | 10 mm |

- Refined Leavers lace
- Padded underwired mini long-line
- Removable AIR pads for a push up effect
- Only available in Noir and Ivoire colours

- Dentelle Leavers raffinée
- Soutien-gorge coques avec armatures
- Coussinets AIR amovibles pour un effet push up
- Existe uniquement en coloris Noir et Ivoire



Price

## J10 - STRING

XS / S / M / L / XL



Price

## J22 - LOW-WAISTED BRIEF

XS / S / M / L / XL



Price

## J41 - PANTY

XS / S / M / L / XL



Price

## V10 - NIGHTIE

S / M / L / XL

- Only available in Noir and Ivoire colours

- Existe uniquement en coloris Noir et Ivoire

# DE L'AIR

NEW

Guipure with a 'stylised flowers' pattern, marked with a very delicate and light graphic band together with a stretch woven fabric.



Price

### C4 - HALF-CUP BRA

|        |                |
|--------|----------------|
| UK     | 32-36 B.C.D.DD |
| EU     | 70-80 B.C.D.E  |
| FR     | 85-95 B.C.D.E  |
| AUS/NZ | 10-14 B.C.D.DD |
| USA    | 32-36 B.C.D.DD |
| JP     | 70-80 C.D.E.F  |

| EU          | B     | C     | D-E   |
|-------------|-------|-------|-------|
| Strap Width | 10 mm | 12 mm | 15 mm |

- Guipure with a 'stylised flowers' pattern
- Underwired bra
- Glamorous half-cup bra shape
- Support up to E cup (EU)

- Guipure motif 'fleurs stylisées'
- Soutien-gorge avec armatures
- Forme corbeille glamour
- Maintien jusqu'au bonnet E (EU)



2048  
AURORE  
(New continuity)

Available



8028  
CITRONELLE  
(Fashion)

Available



Price

### C6 - HALF-CUP BRA WITH FOAM

|        |                |           |
|--------|----------------|-----------|
| UK     | 32-38 B.C.D.DD | 32-36 E   |
| EU     | 70-85 B.C.D.E  | 70-80 F   |
| FR     | 85-100 B.C.D.E | 85-95 F   |
| AUS/NZ | 10-16 B.C.D.DD | 10-14 E   |
| USA    | 32-38 B.C.D.DD | 32-36 DDD |
| JP     | 70-85 C.D.E.F  | 70-80 G   |

| EU          | B     | C     | D-E-F |
|-------------|-------|-------|-------|
| Strap Width | 10 mm | 12 mm | 15 mm |

- Guipure with a 'stylised flowers' pattern
- Underwired bra
- Half-cup bra with foam support offering a nice rounded breast
- Support up to F cup (EU)

- Guipure motif 'fleurs stylisées'
- Soutien-gorge avec armatures
- Forme corbeille avec renfort mousse pour une poitrine parfaitement galbée
- Maintien jusqu'au bonnet F (EU)



Price

### J10 - STRING

XS / S / M / L

- Only available in Aurore colour
- Existe uniquement en coloris Aurore



Price

### J20 - BRIEF

XS / S / M / L / XL



Price

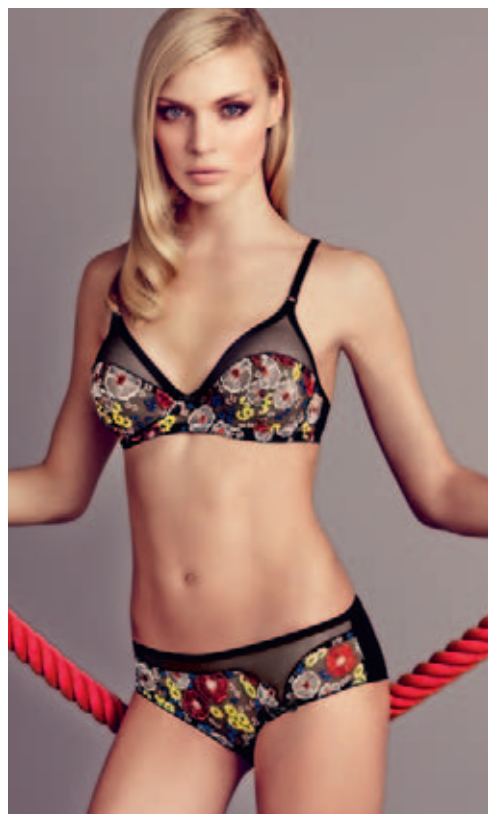
### K10 - BOXER SHORTS

XS / S / M / L

# EN SCÈNE

NEW

The luxury of multicoloured floral embroidery on black stretch tulle.



3000  
NOIR  
(Fashion)

Available



Price

**A0 - FULL-CUP BRA**

|        |                |
|--------|----------------|
| UK     | 32-38 B.C.D.DD |
| EU     | 70-85 B.C.D.E  |
| FR     | 85-100 B.C.D.E |
| AUS/NZ | 10-16 B.C.D.DD |
| USA    | 32-38 B.C.D.DD |
| JP     | 70-85 C.D.E.F  |

|             |      |       |       |
|-------------|------|-------|-------|
| EU          | B    | C     | D-E   |
| Strap Width | 9 mm | 12 mm | 15 mm |

- Multicolored floral embroidery on stretch tulle
- Underwired bra
- Full-cup shape, more coverage
- Support up to E cup (EU)

- Broderie florale multicolore sur tulle stretch
- Soutien-gorge avec armatures
- Forme balconnet plus couvrante
- Maintien jusqu'au bonnet E (EU)



Price

**J10 - STRING**

XS/S/M/L

- Back with stretch tulle foldover for comfort and to be invisible under clothes

- Dos en tulle stretch fourreau pour le confort et l'invisibilité



Price

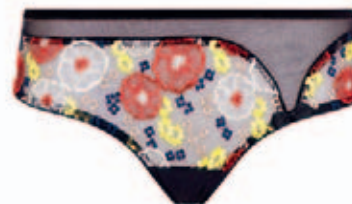
**A6 - PADDED BRA WITH PROGRESSIVE CUPS**

|        |               |
|--------|---------------|
| UK     | 32-36 A.B.C.D |
| EU     | 70-80 A.B.C.D |
| FR     | 85-95 A.B.C.D |
| AUS/NZ | 10-14 A.B.C.D |
| USA    | 32-36 A.B.C.D |
| JP     | 70-80 B.C.D.E |

|             |      |       |
|-------------|------|-------|
| EU          | A-B  | C-D   |
| Strap Width | 9 mm | 12 mm |

- Multicolored floral embroidery on stretch tulle
- Underwired bra
- Padded bra with moulded progressive cups for a push up effect

- Broderie florale multicolore sur tulle stretch
- Soutien-gorge avec armatures
- Coques moulées à épaisseur progressive pour un effet push up



Price

**K10 - BOXER SHORTS**

XS/S/M/L/XL

- Back with stretch tulle foldover for comfort and to be invisible under clothes

- Dos en tulle stretch fourreau pour le confort et l'invisibilité



Price

**V10 - NIGHTIE**

S/M/L

# PURE COLOR

The essential range that adopts the brand's bestselling shapes, combining comfort, invisibility and purity! Light and comfortable ultra-soft Lycra® knit. The bras are moulded, and the bottoms are 'clean cut' for perfect invisibility. New Coronet blue FW15 colour.



Price

### B1 - SOFT BRA

|        |             |
|--------|-------------|
| UK     | 30-36 A.B.C |
| EU     | 65-80 A.B.C |
| FR     | 80-95 A.B.C |
| AUS/NZ | 8-14 A.B.C  |
| USA    | 30-36 A.B.C |
| JP     | 65-80 B.C.D |

|             |       |
|-------------|-------|
| EU          | A.B.C |
| Strap Width | 12 mm |

- Soft and light Lycra® knit
- Soft bra
- Moulded cups for invisibility
- Comfortable and natural-looking bust
- Only available in Ombré colour

- Maille Lycra® ultra douce et légère
- Soutien-gorge sans armatures
- Bonnets moulés pour l'invisibilité
- Confort et poitrine naturelle
- Existe uniquement en coloris Ombré



7059  
CORONET BLUE  
(Fashion)



2024  
OMBRE  
(Continuity)



3000  
NOIR  
(Continuity)

ONLY G3

Available



Price

### A8 - MAGIC AIR

|        |         |            |         |
|--------|---------|------------|---------|
| UK     | 30-36 A | 30-38 B.C  | 30-36 D |
| EU     | 65-80 A | 65-85 B.C  | 65-80 D |
| FR     | 80-95 A | 80-100 B.C | 80-95 D |
| AUS/NZ | 8-14 A  | 8-16 B.C   | 8-14 D  |
| USA    | 30-36 A | 30-38 B.C  | 30-36 D |
| JP     | 65-80 B | 65-85 C.D  | 65-80 E |

|             |       |       |
|-------------|-------|-------|
| EU          | A.B   | C.D   |
| Strap Width | 10 mm | 12 mm |

- Soft and light Lycra® knit
- Padded underwired bra
- Moulded cups for invisibility
- Removable AIR pads for a push up effect
- Available in Ombré, Coronet Blue colours

- Maille Lycra® ultra douce et légère
- Soutien-gorge coques avec armatures
- Bonnets moulés pour l'invisibilité
- Coussinets AIR amovibles pour un effet push up
- Existe en coloris Ombré, Coronet Blue



Price

### D7 - PADDED STRAPLESS BRA

|        |         |            |         |
|--------|---------|------------|---------|
| UK     | 32-36 A | 30-38 B.C  | 32-36 D |
| EU     | 70-80 A | 65-85 B.C  | 70-80 D |
| FR     | 85-95 A | 80-100 B.C | 85-95 D |
| AUS/NZ | 10-14 A | 8-16 B.C   | 10-14 D |
| USA    | 32-36 A | 30-38 B.C  | 32-36 D |
| JP     | 70-80 B | 65-85 C.D  | 70-80 E |

|             |       |       |
|-------------|-------|-------|
| EU          | A.B   | C.D   |
| Strap Width | 10 mm | 12 mm |

- Soft and light Lycra® knit
- Padded underwired bra
- Moulded cups for invisibility
- Removable straps
- Available in Ombré, Coronet Blue colours

- Maille Lycra® ultra douce et légère
- Soutien-gorge coques avec armatures
- Bonnets moulés pour l'invisibilité
- Bretelles amovibles
- Existe en coloris Ombré, Coronet Blue

# PURE COLOR



Price

**J10 - STRING**

XS / S / M / L / XL

- 'Clean cut' string
- Available in Ombré, Coronet Blue colours

- String 'clean cut'
- Existe en coloris Ombré, Coronet Blue



Price

**J20 - BRIEF**

XS / S / M / L / XL

- 'Clean cut' brief
- Available in Ombré, Coronet Blue colours

- Brésilien 'clean cut'
- Existe en coloris Ombré, Coronet Blue



Price

**K10 - BOXER SHORTS**

XS / S / M / L / XL

- 'Clean cut' boxer shorts
- Only available in Ombré colour

- Shorty 'clean cut'
- Existe uniquement en coloris Ombré



Price

**G3 - UNDERWIRED CAMISOLE**

|        |              |
|--------|--------------|
| UK     | 32-38 B.C.D  |
| EU     | 70-85 B.C.D  |
| FR     | 85-100 B.C.D |
| AUS/NZ | 10-16 B.C.D  |
| USA    | 32-38 B.C.D  |
| JP     | 70-85 C.D.E  |

|             |       |       |
|-------------|-------|-------|
| EU          | B     | C.D   |
| Strap Width | 10 mm | 12 mm |

- Soft and light Lycra® knit
- With wires
- Moulded cups offer invisibility
- Available in Ombré, Noir colours

- Maille Lycra® ultra douce et légère
- Avec armatures
- Bonnets moulés pour l'invisibilité
- Existe en coloris Ombré, Noir

## Notes / Order List

# ENVOÛTANTE

A graphic stretch lace combined with a soft and comfortable 'crepe' effect fabric. New American Beauty FW15 colour.



4043  
AMERICAN BEAUTY  
(Fashion)



1000  
BLANC  
(Continuity)

Available



Price

### B1 - SOFT BRA

|        |             |
|--------|-------------|
| UK     | 30-36 A.B.C |
| EU     | 65-80 A.B.C |
| FR     | 80-95 A.B.C |
| AUS/NZ | 8-14 A.B.C  |
| USA    | 30-36 A.B.C |
| JP     | 65-80 B.C.D |

|             |       |       |
|-------------|-------|-------|
| EU          | A.B   | C     |
| Strap Width | 10 mm | 12 mm |

- Graphic stretch lace and soft, comfortable 'crepe' effect fabric
  - Soft bra
  - Comfortable and natural-looking bust
- 
- Dentelle stretch graphique et matière effet crêpe légère et confortable
  - Soutien-gorge sans armatures
  - Confort et poitrine naturelle



Price

### C4 - HALF-CUP BRA

|        |                |           |
|--------|----------------|-----------|
| UK     | 32-38 B.C.D.DD | 32-36 E   |
| EU     | 70-85 B.C.D.E  | 70-80 F   |
| FR     | 85-100 B.C.D.E | 85-95 F   |
| AUS/NZ | 10-16 B.C.D.DD | 10-14 E   |
| USA    | 32-38 B.C.D.DD | 32-36 DDD |
| JP     | 70-85 C.D.E.F  | 70-80 G   |

|             |       |       |       |
|-------------|-------|-------|-------|
| EU          | B     | C     | D.E.F |
| Strap Width | 10 mm | 12 mm | 15 mm |

- Graphic stretch lace and soft, comfortable 'crepe' effect fabric
  - Underwired bra
  - Glamorous half-cup bra shape
  - Support up to F cup (EU)
- 
- Dentelle stretch graphique et matière effet crêpe légère et confortable
  - Soutien-gorge avec armatures
  - Forme corbeille glamour
  - Maintien jusqu'au bonnet F (EU)



Price

### A6 - PADDED BRA WITH PROGRESSIVE CUPS

|        |         |            |         |
|--------|---------|------------|---------|
| UK     | 32-36 A | 30-38 B.C  | 30-36 D |
| EU     | 70-80 A | 65-85 B.C  | 65-80 D |
| FR     | 85-95 A | 80-100 B.C | 80-95 D |
| AUS/NZ | 10-14 A | 8-16 B.C   | 8-14 D  |
| USA    | 32-36 A | 30-38 B.C  | 30-36 D |
| JP     | 70-80 B | 65-85 C.D  | 65-80 E |

|             |       |       |
|-------------|-------|-------|
| EU          | A-B   | C-D   |
| Strap Width | 10 mm | 12 mm |

- Graphic stretch lace and soft, comfortable 'crepe' effect fabric
  - Underwired bra
  - Padded bra with moulded progressive cups for a push up effect
- 
- Dentelle stretch graphique et matière effet crêpe légère et confortable
  - Soutien-gorge avec armatures
  - Coques moulées à épaisseur progressive pour un effet push up

# ENVOÛTANTE

## Notes / Order List



Price

**A8 - MAGIC AIR**

|        |         |             |          |
|--------|---------|-------------|----------|
| UK     | 32-36 A | 30-36 B.C.D | 30-34 DD |
| EU     | 70-80 A | 65-80 B.C.D | 65-75 E  |
| FR     | 85-95 A | 80-95 B.C.D | 80-90 E  |
| AUS/NZ | 10-14 A | 8-14 B.C.D  | 8-12 DD  |
| USA    | 32-36 A | 30-36 B.C.D | 30-34 DD |
| JP     | 70-80 B | 65-80 C.D.E | 65-75 F  |

|             |       |       |
|-------------|-------|-------|
| EU          | A-B   | C-D-E |
| Strap Width | 10 mm | 12 mm |

- Graphic stretch lace and soft, comfortable 'crepe' effect fabric
- Padded underwired bra
- Removable AIR pads for a push up effect

- Dentelle stretch graphique et matière effet crêpe légère et confortable
- Soutien-gorge coques avec armatures
- Coussinets AIR amovibles pour un effet push up



Price

**J10 - STRING**

XS / S / M / L / XL



Price

**J22 - LOW-WAISTED BRIEF**

XS / S / M / L / XL



Price

**K10 - BOXER SHORTS**

XS / S / M / L / XL



Price

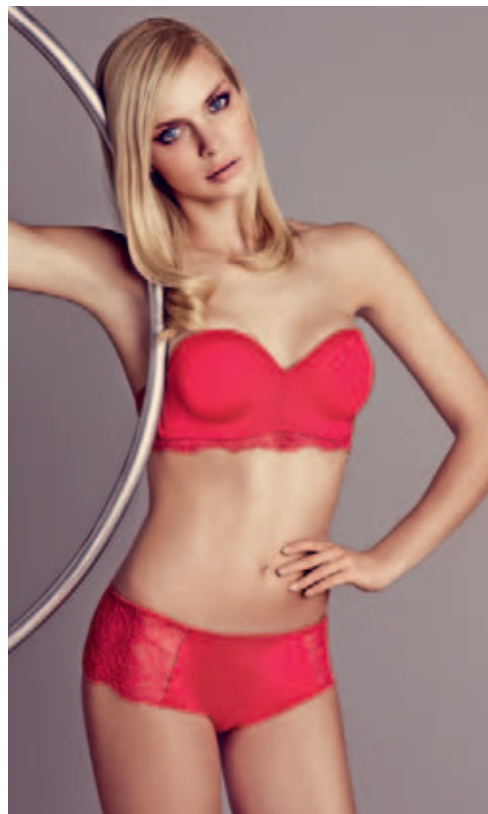
**Q10 - BODY**

XS / S / M / L

- Graphic stretch lace and soft, comfortable 'crepe' effect fabric
- Dentelle stretch graphique et matière effet crêpe légère et confortable

# GRAND JEU

Satin-finish microfibre knit and Jacquard stretch lace for a soft and comfortable daily range. The bras are moulded, and the bottoms are 'clean cut' for invisibility. New Cherry FW15 colour.



4024  
CHERRY  
(Fashion)



2044  
NUDE  
(Continuity)



3000  
NOIR  
(Continuity)

Available



Price

## B1 - SOFT BRA

|        |             |
|--------|-------------|
| UK     | 30-36 A.B.C |
| EU     | 65-80 A.B.C |
| FR     | 80-95 A.B.C |
| AUS/NZ | 8-14 A.B.C  |
| USA    | 30-36 A.B.C |
| JP     | 65-80 B.C.D |

|             |       |
|-------------|-------|
| EU          | A.B.C |
| Strap Width | 12 mm |

- Satin microfibre knit and stretch Jacquard lace
- Soft bra
- Moulded cups for invisibility
- Comfortable and natural-looking bust
- Only available in Noir and Nude colours

- Maille microfibre satinée et dentelle Jacquard stretch
- Soutien-gorge sans armatures
- Bonnets moulés pour l'invisibilité
- Confort et poitrine naturelle
- Existe uniquement en coloris Noir et Nude



Price

## B9 - FULL-CUP BRA

|        |                    |
|--------|--------------------|
| UK     | 32-38 B.C.D.DD.E   |
| EU     | 70-85 B.C.D.E.F    |
| FR     | 85-100 B.C.D.E.F   |
| AUS/NZ | 10-16 B.C.D.DD.E   |
| USA    | 32-38 B.C.D.DD.DDD |
| JP     | 70-85 C.D.E.F.G    |

|             |       |       |
|-------------|-------|-------|
| EU          | B.C   | D.E.F |
| Strap Width | 12 mm | 15 mm |

- Satin microfibre knit and stretch Jacquard lace
- Underwired bra
- Full cup shape, more coverage
- Moulded cups for invisibility
- Support up to F cup (EU)

- Maille microfibre satinée et dentelle Jacquard stretch
- Soutien-gorge avec armatures
- Forme balconnet plus couvrante
- Bonnets moulés pour l'invisibilité
- Maintien jusqu'au bonnet F (EU)



Price

## A2 - PADDED PLUNGE SEXY BRA

|        |         |         |         |
|--------|---------|---------|---------|
| UK     | 34-36 A | 32-36 B | 30-36 C |
| EU     | 75-80 A | 70-80 B | 65-80 C |
| FR     | 90-95 A | 85-95 B | 80-95 C |
| AUS/NZ | 12-14 A | 10-14 B | 8-14 C  |
| USA    | 34-36 A | 32-36 B | 30-36 C |
| JP     | 75-80 B | 70-80 C | 65-80 D |

|             |       |
|-------------|-------|
| EU          | A.B.C |
| Strap Width | 12 mm |

- Satin microfibre knit and stretch Jacquard lace
- Underwired bra
- Padded bra with low-cut cups for plunge cleavage
- Detachable straps at the back for cross-over position
- Only available in Noir and Nude colours

- Maille microfibre satinée et dentelle Jacquard stretch
- Soutien-gorge avec armatures
- Coques moulées creusées pour un décolleté plongeant
- Bretelles détachables dans le dos pour position 'dos croisé'
- Existe uniquement en coloris Noir et Nude



# GRAND JEU



Price

### A6 - PADDED BRA WITH PROGRESSIVE CUPS

| UK     | 30-36 A | 30-38 B.C  | 30-36 D |
|--------|---------|------------|---------|
| EU     | 65-80 A | 65-85 B.C  | 65-80 D |
| FR     | 80-95 A | 80-100 B.C | 80-95 D |
| AUS/NZ | 8-14 A  | 8-16 B.C   | 8-14 D  |
| USA    | 30-36 A | 30-38 B.C  | 30-36 D |
| JP     | 65-80 B | 65-85 C.D  | 65-80 E |

| EU          | A.B   | C.D   |
|-------------|-------|-------|
| Strap Width | 10 mm | 12 mm |

- Satin microfibre knit and stretch Jacquard lace
- Underwired bra
- Moulded cups for invisibility
- Progressive cups for a push up effect
- Detachable straps

- Maille microfibre satinée et dentelle Jacquard stretch
- Soutien-gorge avec armatures
- Bonnets moulés pour l'invisibilité
- Coques à épaisseur progressive pour un effet push-up
- Bretelles détachables



Price

### A9 - PADDED SPACER BRA

| UK     | 30-38 B.C.D.DD | 32-36 E   |
|--------|----------------|-----------|
| EU     | 65-85 B.C.D.E  | 70-80 F   |
| FR     | 80-100 B.C.D.E | 85-95 F   |
| AUS/NZ | 8-16 B.C.D.DD  | 10-14 E   |
| USA    | 30-38 B.C.D.DD | 32-36 DDD |
| JP     | 65-85 C.D.E.F  | 70-80 G   |

| EU          | B.C.D.E.F |
|-------------|-----------|
| Strap Width | 15 mm     |

- Underwired bra
- SPACER 3D cups: light, soft and comfortable, 'second skin' effect
- Natural-looking bust and support up to F cup (EU)
- Detachable straps at the back for cross-over position
- Only available in Noir and Nude colours

- Soutien-gorge avec armatures
- Coques Spacer 3D moulées : légères, douces et confortables, effet 'seconde peau'
- Galbe naturel et maintien jusqu'au bonnet F (EU)
- Bretelles détachables dans le dos pour position 'dos croisé'
- Existe uniquement en coloris Noir et Nude



Price

### D7 - PADDED STRAPLESS BRA

| UK     | 32-36 A | 30-38 B.C  | 32-36 D |
|--------|---------|------------|---------|
| EU     | 70-80 A | 65-85 B.C  | 70-80 D |
| FR     | 85-95 A | 80-100 B.C | 85-95 D |
| AUS/NZ | 10-14 A | 8-16 B.C   | 10-14 D |
| USA    | 32-36 A | 30-38 B.C  | 32-36 D |
| JP     | 70-80 B | 65-85 C.D  | 70-80 E |

| EU          | A.B   | C.D   |
|-------------|-------|-------|
| Strap Width | 10 mm | 12 mm |

- Satin microfibre knit and stretch Jacquard lace
- Padded underwired bra
- Moulded cups for invisibility
- Removable straps

- Maille microfibre satinée et dentelle Jacquard stretch
- Soutien-gorge coques avec armatures
- Bonnets moulés pour l'invisibilité
- Bretelles amovibles



Price

### J11 - TANGA

XS / S / M / L / XL



Price

### J20 - BRIEF

XS / S / M / L / XL



Price

### K10 - BOXER SHORTS

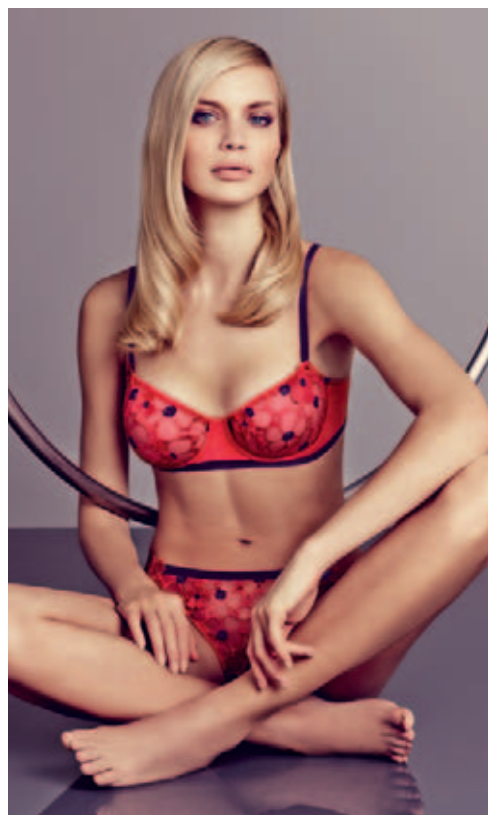
XS / S / M / L / XL

• 'Clean cut' bottoms

• Bas 'clean cut'

# ENCHANTÉE

Refined, romantic floral embroidery. Finishing in contrasting colour and detail of applied flowers for a totally glamorous look.



4024  
CHERRY  
(Fashion)

Available



Price

### B1 - SOFT BRA

|        |             |
|--------|-------------|
| UK     | 32-36 A.B.C |
| EU     | 70-80 A.B.C |
| FR     | 85-95 A.B.C |
| AUS/NZ | 10-14 A.B.C |
| USA    | 32-36 A.B.C |
| JP     | 70-80 B.C.D |

|             |       |       |
|-------------|-------|-------|
| EU          | A.B   | C     |
| Strap Width | 10 mm | 12 mm |

- Floral 'daisy' embroidery and applied flowers
- Soft bra
- Comfortable and natural-looking bust

- Broderie florale 'pâquerettes' et fleurs appliquées
- Soutien-gorge sans armatures
- Confort et poitrine naturelle



Price

### C4 - HALF-CUP BRA

|        |                |           |
|--------|----------------|-----------|
| UK     | 30-38 B.C.D.DD | 32-36 E   |
| EU     | 65-85 B.C.D.E  | 70-80 F   |
| FR     | 80-100 B.C.D.E | 85-95 F   |
| AUS/NZ | 8-16 B.C.D.DD  | 10-14 E   |
| USA    | 30-38 B.C.D.DD | 32-36 DDD |
| JP     | 65-85 C.D.E.F  | 70-80 G   |

|             |       |       |       |
|-------------|-------|-------|-------|
| EU          | B     | C     | D.E.F |
| Strap Width | 10 mm | 12 mm | 15 mm |

- Floral 'daisy' embroidery and applied flowers
- Underwired bra
- Glamorous half-cup bra shape
- Support up to F cup (EU)

- Broderie florale 'pâquerettes' et fleurs appliquées
- Soutien-gorge avec armatures
- Forme corbeille glamour
- Maintien jusqu'au bonnet F (EU)



Price

### A8 - MAGIC AIR

|        |         |             |
|--------|---------|-------------|
| UK     | 32-36 A | 30-36 B.C.D |
| EU     | 70-80 A | 65-80 B.C.D |
| FR     | 85-95 A | 80-95 B.C.D |
| AUS/NZ | 10-14 A | 8-14 B.C.D  |
| USA    | 32-36 A | 30-36 B.C.D |
| JP     | 70-80 B | 65-80 C.D.E |

|             |       |       |
|-------------|-------|-------|
| EU          | A-B   | C-D   |
| Strap Width | 10 mm | 12 mm |

- Floral 'daisy' embroidery and applied flowers
- Padded underwired bra
- Removable AIR pads for a push up effect

- Broderie florale 'pâquerettes' et fleurs appliquées
- Soutien-gorge coques avec armatures
- Coussinets AIR amovibles pour un effet push up

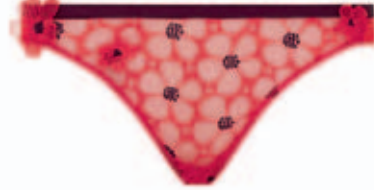
# ENCHANTÉE



Price

**J10 - STRING**

XS / S / M / L / XL



Price

**J20 - BRIEF**

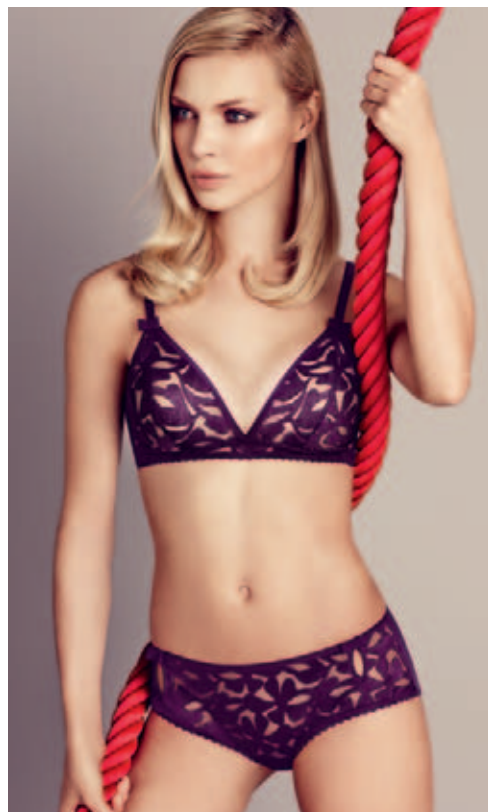
XS / S / M / L / XL

Notes / Order List

# PRETTY RETRO

NEW

Refined embroidery, with a floral pattern as if resting on the skin. We like the 'teardrop' detail that embellishes the range.



Price

**B1 - SOFT BRA**

|        |             |
|--------|-------------|
| UK     | 32-36 A.B.C |
| EU     | 70-80 A.B.C |
| FR     | 85-95 A.B.C |
| AUS/NZ | 10-14 A.B.C |
| USA    | 32-36 A.B.C |
| JP     | 70-80 B.C.D |

|             |       |       |
|-------------|-------|-------|
| EU          | A-B   | C     |
| Strap Width | 10 mm | 12 mm |

- Floral embroidery as if resting on the skin
- Soft bra
- Comfortable and natural-looking bust

- Broderie florale comme posée sur la peau
- Soutien-gorge sans armatures
- Confort et poitrine naturelle



Price

**J10 - STRING**

XS / S / M / L

- 'Teardrop' detail on the back

- Détail 'goutte' au dos



Price

**C4 - HALF-CUP BRA**

|        |                |
|--------|----------------|
| UK     | 32-38 B.C.D.DD |
| EU     | 70-85 B.C.D.E  |
| FR     | 85-100 B.C.D.E |
| AUS/NZ | 10-16 B.C.D.DD |
| USA    | 32-38 B.C.D.DD |
| JP     | 70-85 C.D.E.F  |

|             |       |       |       |
|-------------|-------|-------|-------|
| EU          | B     | C     | D-E   |
| Strap Width | 10 mm | 12 mm | 15 mm |

- Floral embroidery as if resting on the skin
- Underwired bra
- Glamorous half-cup bra shape
- Support up to E cup (EU)

- Broderie florale comme posée sur la peau
- Soutien-gorge avec armatures
- Forme corbeille glamour
- Maintien jusqu'au bonnet E (EU)



Price

**J20 - BRIEF**

XS / S / M / L / XL



Price

**A8 - MAGIC AIR**

|        |                |
|--------|----------------|
| UK     | 32-38 A.B.C.D  |
| EU     | 70-85 A.B.C.D  |
| FR     | 85-100 A.B.C.D |
| AUS/NZ | 10-16 A.B.C.D  |
| USA    | 32-38 A.B.C.D  |
| JP     | 70-85 B.C.D.E  |

|             |       |       |
|-------------|-------|-------|
| EU          | A-B   | C-D   |
| Strap Width | 10 mm | 12 mm |

- Floral embroidery as if resting on the skin
- Padded underwired bra
- Removable AIR pads for a push up effect

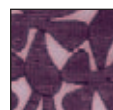
- Broderie florale comme posée sur la peau
- Soutien-gorge coques avec armatures
- Coussinets AIR amovibles pour un effet push up



Price

**K10 - BOXER SHORTS**

XS / S / M / L



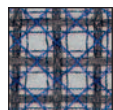
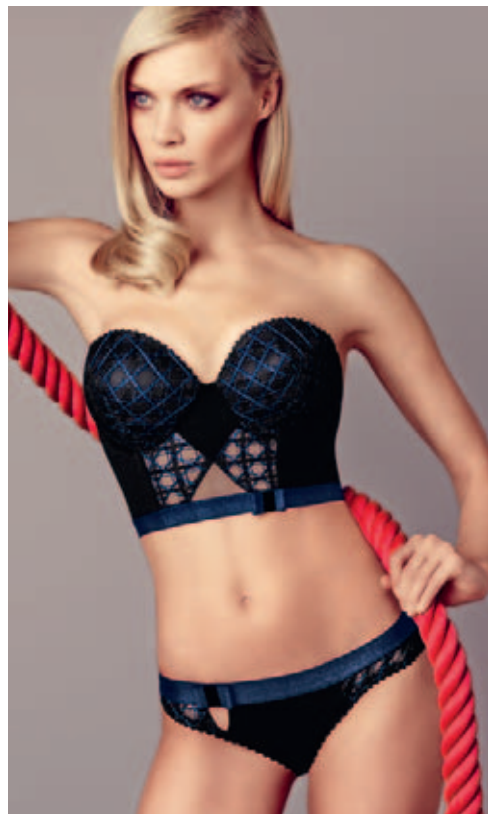
5046  
PLUM  
(Fashion)

Available

# GRAND SOIR

NEW

A play of graphic cut-outs married with a 'checked' embroidery with silver lurex threads woven through, finished with an elasticated lurex band and a soft, light and comfortable stretch woven fabric.



7058  
PEACOT  
(Fashion)

Available



Price

**C4 - HALF-CUP BRA**

|        |                |
|--------|----------------|
| UK     | 32-36 B.C.D.DD |
| EU     | 70-80 B.C.D.E  |
| FR     | 85-95 B.C.D.E  |
| AUS/NZ | 10-14 B.C.D.DD |
| USA    | 32-36 B.C.D.DD |
| JP     | 70-80 C.D.E.F  |

| EU          | B     | C     | D-E   |
|-------------|-------|-------|-------|
| Strap Width | 10 mm | 12 mm | 15 mm |

- 'Checked' embroidery with silver lurex threads
- Underwired bra
- Glamorous half-cup bra shape
- Support up to E cup (EU)

- Broderie 'carreaux' rehaussée de fils lurex argentés
- Soutien-gorge avec armatures
- Forme corbeille glamour
- Maintien jusqu'au bonnet E (EU)



Price

**J10 - STRING**

XS/S/M/L



Price

**C6 - HALF-CUP BRA WITH FOAM**

|        |                |
|--------|----------------|
| UK     | 32-36 B.C.D.DD |
| EU     | 70-80 B.C.D.E  |
| FR     | 85-95 B.C.D.E  |
| AUS/NZ | 10-14 B.C.D.DD |
| USA    | 32-36 B.C.D.DD |
| JP     | 70-80 C.D.E.F  |

| EU          | B     | C     | D-E   |
|-------------|-------|-------|-------|
| Strap Width | 10 mm | 12 mm | 15 mm |

- 'Checked' embroidery with silver lurex threads
- Underwired bra
- Half-cup bra with foam support offering a nice rounded breast
- Support up to E cup (EU)

- Broderie 'carreaux' rehaussée de fils lurex argentés
- Soutien-gorge avec armatures
- Forme corbeille avec renfort mousse pour une poitrine parfaitement galbée
- Maintien jusqu'au bonnet E (EU)



Price

**J20 - BRIEF**

XS/S/M/L/XL



Price

**E3 - PADDED STRAPLESS LONG-LINE BRA**

|        |               |
|--------|---------------|
| UK     | 32-36 A.B.C.D |
| EU     | 70-80 A.B.C.D |
| FR     | 85-95 A.B.C.D |
| AUS/NZ | 10-14 A.B.C.D |
| USA    | 32-36 A.B.C.D |
| JP     | 70-80 B.C.D.E |

| EU          | A-B   | C     | D     |
|-------------|-------|-------|-------|
| Strap Width | 10 mm | 12 mm | 15 mm |

- 'Checked' embroidery with silver lurex threads
- Underwired long-line
- Padded moulded cups offering a nice rounded breast
- Removable straps

- Broderie 'carreaux' rehaussée de fils lurex argentés
- Bustier avec armatures
- Coques moulées pour une poitrine parfaitement galbée
- Bretelles amovibles



Price

**J22 - LOW-WAISTED BRIEF**

XS/S/M/L

# EN CAVALE

NEW

A two-tone 'wave' embroidery pattern sweeps across stretch tulle, paired with a soft, light and comfortable stretch woven fabric.



7058  
PEACOT  
(Fashion)

Available



Price

**B1 - SOFT BRA**

|        |             |
|--------|-------------|
| UK     | 32-36 A.B.C |
| EU     | 70-80 A.B.C |
| FR     | 85-95 A.B.C |
| AUS/NZ | 10-14 A.B.C |
| USA    | 32-36 A.B.C |
| JP     | 70-80 B.C.D |

|             |       |       |
|-------------|-------|-------|
| EU          | A-B   | C     |
| Strap Width | 10 mm | 12 mm |

- 'Wave' embroidery pattern on stretch tulle
- Soft bra
- Moulded cups
- Comfortable and natural-looking bust

- Broderie motif 'vague' sur tulle stretch
- Soutien-gorge sans armatures
- Bonnets moulés
- Confort et poitrine naturelle



Price

**A0 - FULL CUP BRA**

|        |                |
|--------|----------------|
| UK     | 32-38 B.C.D.DD |
| EU     | 70-85 B.C.D.E  |
| FR     | 85-100 B.C.D.E |
| AUS/NZ | 10-16 B.C.D.DD |
| USA    | 32-38 B.C.D.DD |
| JP     | 70-85 C.D.E.F  |

|             |       |       |       |
|-------------|-------|-------|-------|
| EU          | B     | C     | D-E   |
| Strap Width | 10 mm | 12 mm | 14 mm |

- 'Wave' embroidery pattern on stretch tulle
- Underwired bra
- Full-cup shape, more coverage
- Moulded cups
- Support up to E cup (EU)

- Broderie motif 'vague' sur tulle stretch
- Soutien-gorge avec armatures
- Forme balconnet plus couvrante
- Bonnets moulés
- Maintien jusqu'au bonnet E (EU)



Price

**A8 - MAGIC AIR**

|        |               |
|--------|---------------|
| UK     | 32-36 A.B.C.D |
| EU     | 70-80 A.B.C.D |
| FR     | 85-95 A.B.C.D |
| AUS/NZ | 10-14 A.B.C.D |
| USA    | 32-36 A.B.C.D |
| JP     | 70-80 B.C.D.E |

|             |       |       |
|-------------|-------|-------|
| EU          | A-B   | C-D   |
| Strap Width | 10 mm | 12 mm |

- 'Wave' embroidery pattern on stretch tulle
- Padded underwired bra
- Removable AIR pads for a push up effect

- Broderie motif 'vague' sur tulle stretch
- Soutien-gorge coques avec armatures
- Coussinets AIR amovibles pour un effet push up



Price

**J20 - BRIEF**

XS / S / M / L / XL

- Back with stretch tulle foldover for comfort and to be invisible under clothes

- Dos en tulle stretch fourreau pour le confort et l'invisibilité



Price

**K10 - BOXER SHORTS**

XS / S / M / L

- Back with stretch tulle foldover for comfort and to be invisible under clothes

- Dos en tulle stretch fourreau pour le confort et l'invisibilité



Price

**V10 - NIGHTIE**

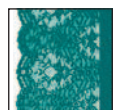
S / M / L

- Sexy nightie with an ultra-plunging décolleté, edged with very luxurious 'wave' embroidery

- Combinette sexy avec décolleté ultra plongeant, bordée d'une broderie 'vague' très luxueuse

# NOUVEL ÉMOI

Nouvel Emoi marries the delicateness of glamorous lace with a very soft satin knit to create an ultra feminine and alluring collection. New fashion Fanfare colour for 2015 Winter.



6046  
FANFARE  
(Fashion)



3000  
NOIR  
(Continuity)



1009  
IVORY  
(Continuity)

Available



Price

### B1 - SOFT BRA

|        |             |
|--------|-------------|
| UK     | 30-36 A.B.C |
| EU     | 65-80 A.B.C |
| FR     | 80-95 A.B.C |
| AUS/NZ | 8-14 A.B.C  |
| USA    | 30-36 A.B.C |
| JP     | 65-80 B.C.D |

|             |       |
|-------------|-------|
| EU          | A.B.C |
| Strap Width | 12 mm |

- Glamorous lace with a soft satin knit
- Soft bra
- Comfortable and natural-looking bust
- Only available in Noir and Ivory colours

- Dentelle glamour mariée à une maille satinée douce
- Soutien-gorge sans armatures
- Confort et poitrine naturelle
- Existe uniquement en Noir et Ivory



Price

### C4 - HALF-CUP BRA

|        |                |           |
|--------|----------------|-----------|
| UK     | 32-38 B.C.D.DD | 32-36 E   |
| EU     | 70-85 B.C.D.E  | 70-80 F   |
| FR     | 85-100 B.C.D.E | 85-95 F   |
| AUS/NZ | 10-16 B.C.D.DD | 10-14 E   |
| USA    | 32-38 B.C.D.DD | 32-36 DDD |
| JP     | 70-85 C.D.E.F  | 70-80 G   |

|             |       |       |
|-------------|-------|-------|
| EU          | B.C   | D.E.F |
| Strap Width | 12 mm | 15 mm |

- Glamorous lace with a soft satin knit
- Underwired bra
- Glamorous half-cup bra shape
- Support up to F cup (EU)
- Two removable straps sets

- Dentelle glamour mariée à une maille satinée douce
- Soutien-gorge avec armatures
- Forme corbeille glamour
- Maintien jusqu'au bonnet F (EU)
- Deux jeux de bretelles interchangeables



Price

### A8 - MAGIC AIR

|        |                  |
|--------|------------------|
| UK     | 30-36 A.B.C.D.DD |
| EU     | 65-80 A.B.C.D.E  |
| FR     | 80-95 A.B.C.D.E  |
| AUS/NZ | 8-14 A.B.C.D.DD  |
| USA    | 30-36 A.B.C.D.DD |
| JP     | 65-80 B.C.D.E.F  |

|             |           |
|-------------|-----------|
| EU          | A.B.C.D.E |
| Strap Width | 12 mm     |

- Glamorous lace with a soft satin knit
- Padded underwired bra
- Removable AIR pads for a push up effect
- Detachable straps

- Dentelle glamour mariée à une maille satinée douce
- Soutien-gorge coques avec armatures
- Coussinets AIR amovibles pour un effet push up
- Bretelles détachables



# NOUVEL ÉMOI



Price

## E8 - MAGIC AIR LONG-LINE

|        |               |
|--------|---------------|
| UK     | 32-36 A.B.C.D |
| EU     | 70-80 A.B.C.D |
| FR     | 85-95 A.B.C.D |
| AUS/NZ | 10-14 A.B.C.D |
| USA    | 32-36 A.B.C.D |
| JP     | 70-80 B.C.D.E |

|             |         |
|-------------|---------|
| EU          | A.B.C.D |
| Strap Width | 12 mm   |

- Glamorous lace with a soft satin knit
- Padded underwired long-line bra
- Removable AIR pads for a push up effect
- Detachable straps
- Only available in Noir colour

- Dentelle glamour mariée à une maille satinée douce
- Bustier coques avec armatures
- Coussinets AIR amovibles pour un effet push up
- Bretelles détachables
- Existe uniquement en coloris Noir



Price

## D7 - PADDED STRAPLESS BRA

|        |         |            |          |
|--------|---------|------------|----------|
| UK     | 32-36 A | 30-38 B.C  | 32-38 D  |
| EU     | 70-80 A | 65-85 B.C  | 70-85 D  |
| FR     | 85-95 A | 80-100 B.C | 85-100 D |
| AUS/NZ | 10-14 A | 8-16 B.C   | 10-16 D  |
| USA    | 32-36 A | 30-38 B.C  | 32-38 D  |
| JP     | 70-80 B | 65-85 C.D  | 70-85 E  |

|             |         |
|-------------|---------|
| EU          | A.B.C.D |
| Strap Width | 12 mm   |

- Glamorous lace with a soft satin knit
- Padded underwired bra
- Padded bra with moulded cups for a nice rounded breast
- Removable straps
- Only available in Noir and Ivory colours

- Dentelle glamour mariée à une maille satinée douce
- Soutien-gorge coques avec armatures
- Coques moulées pour une poitrine parfaitement galbée
- Bretelles amovibles
- Existe uniquement en Noir et Ivory



Price

## Z6 - BASQUE WITH PROGRESSIVE CUPS

|        |               |
|--------|---------------|
| UK     | 32-36 A.B.C.D |
| EU     | 70-80 A.B.C.D |
| FR     | 85-95 A.B.C.D |
| AUS/NZ | 10-14 A.B.C.D |
| USA    | 32-36 A.B.C.D |
| JP     | 70-80 B.C.D.E |

|             |         |
|-------------|---------|
| EU          | A.B.C.D |
| Strap Width | 12 mm   |

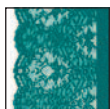
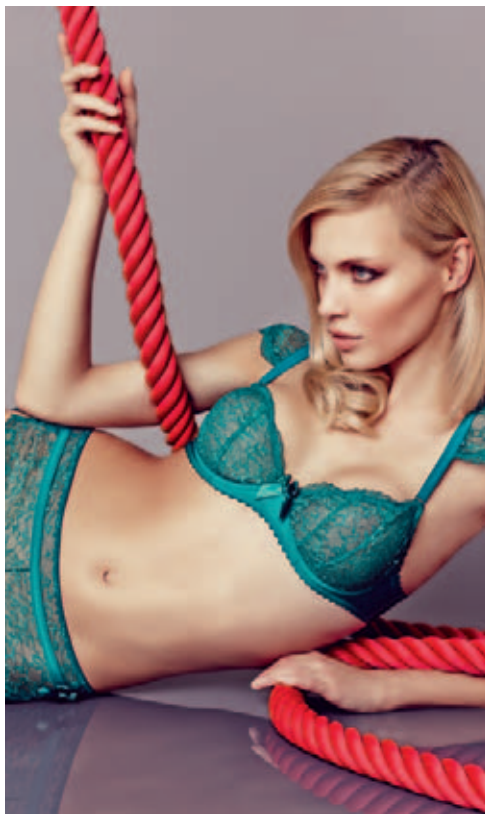
- Glamorous lace with a soft satin knit
- With wires
- Padded shape with moulded progressive cups for a push up effect
- Removable suspenders
- Only available in Ivory colour

- Dentelle glamour mariée à une maille satinée douce
- Avec armatures
- Coques moulées à épaisseur progressive pour un effet push up
- Jarretelles amovibles
- Existe uniquement en coloris Ivory

## Notes / Order List

# NOUVEL ÉMOI

Nouvel Emoi marries the delicateness of glamorous lace with a very soft satin knit to create an ultra feminine and alluring collection. New fashion Fanfare colour for 2015 Winter.



6046  
FANFARE  
(Fashion)



3000  
NOIR  
(Continuity)



1009  
IVORY  
(Continuity)

Available



Price

**J10 - STRING**

XS / S / M / L / XL

• Only available in Noir and Ivory colours

• Existe uniquement en Noir et Ivory



Price

**U10 - SUSPENDERS**

1 / 2 / 3

• Only available in Noir and Ivory colours

• Existe uniquement en Noir et Ivory



Price

**J20 - BRIEF**

XS / S / M / L / XL



Price

**K10 - BOXER SHORTS**

XS / S / M / L / XL



Price

**U20 - GARTER**

XS - S / M - L

• Only available in Ivory colour

• Existe uniquement en coloris Ivory



Price

**Q10 - BODY**

XS / S / M / L

- Only available in Noir and Ivory colours
- Existe uniquement en Noir et Ivory



Price

**V10 - NIGHTIE**

S / M / L / XL

- Only available in Noir colour
- Existe uniquement en coloris Noir



Price

**V11 - NIGHTIE**

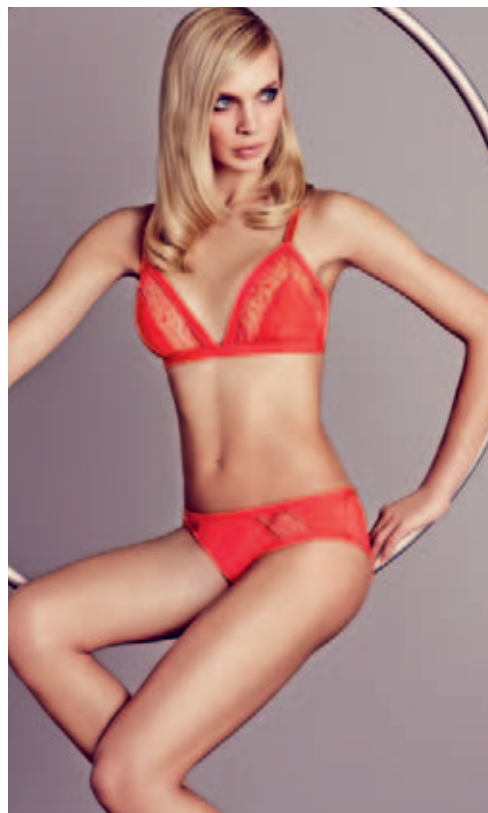
S / M / L / XL

- Only available in Ivory colour
- Existe uniquement en coloris Ivory

# AVEC TOI

NEW

Lycra® knit and floral Leavers lace signed Huit for a refined daily range.



3000  
NOIR  
(New continuity)

Available



4042  
FLAMANT  
(Fashion)

Available



Price

**B1 - SOFT BRA**

|        |             |
|--------|-------------|
| UK     | 32-36 A.B.C |
| EU     | 70-80 A.B.C |
| FR     | 85-95 A.B.C |
| AUS/NZ | 10-14 A.B.C |
| USA    | 32-36 A.B.C |
| JP     | 70-80 B.C.D |

|             |       |       |
|-------------|-------|-------|
| EU          | A-B   | C     |
| Strap Width | 10 mm | 12 mm |

- Lycra® knit and delicate Leavers lace with Huit signature
  - Soft bra
  - Comfortable and natural-looking bust
- 
- Maille Lycra® et bande en dentelle Leavers siglée Huit
  - Soutien-gorge sans armatures
  - Confort et poitrine naturelle



Price

**J10 - STRING**

XS / S / M / L



Price

**C3 - FULL-CUP BRA**

|        |                |          |
|--------|----------------|----------|
| UK     | 32-38 B.C.D.DD | 32-36E   |
| EU     | 70-85 B.C.D.E  | 70-80F   |
| FR     | 85-100 B.C.D.E | 85-95F   |
| AUS/NZ | 10-16 B.C.D.DD | 10-14E   |
| USA    | 32-38 B.C.D.DD | 32-36DDD |
| JP     | 70-85 C.D.E.F  | 70-80G   |

|             |       |       |       |
|-------------|-------|-------|-------|
| EU          | B     | C     | D-E-F |
| Strap Width | 10 mm | 12 mm | 15 mm |

- Lycra® knit and delicate Leavers lace with Huit signature
  - Underwired bra
  - New full-cup shape, with coverage
  - Support up to F cup (EU)
- 
- Maille Lycra® et bande en dentelle Leavers siglée Huit
  - Soutien-gorge avec armatures
  - Nouvelle forme balconnet emboîtante
  - Maintien jusqu'au bonnet F (EU)



Price

**J20 - BRIEF**

XS / S / M / L / XL



Price

**A8 - MAGIC AIR**

|        |               |
|--------|---------------|
| UK     | 32-36 A.B.C.D |
| EU     | 70-80 A.B.C.D |
| FR     | 85-95 A.B.C.D |
| AUS/NZ | 10-14 A.B.C.D |
| USA    | 32-36 A.B.C.D |
| JP     | 70-80 B.C.D.E |

|             |       |       |
|-------------|-------|-------|
| EU          | A-B   | C-D   |
| Strap Width | 10 mm | 12 mm |

- Lycra® knit and delicate Leavers lace with Huit signature
  - Padded underwired bra
  - Removable AIR pads for a push up effect
  - Detachable straps
- 
- Maille Lycra® et bande en dentelle Leavers siglée Huit
  - Soutien-gorge coques avec armatures
  - Coussinets AIR amovibles pour un effet push up
  - Bretelles détachables



Price

**K10 - BOXER SHORTS**

XS / S / M / L

CONTINUITY

---



# CONTINUITY

Ranges which never go out of style, season after season. These are the classic ranges which build up the Huit collection and are stocked all year round.

## À LA FOLIE



3000  
NOIR  
(Continuity)



**B2 - UNDERWIRED BRA**  
UK 32-38 B.C.D  
EU 70-85 B.C.D



**A0 - FULL-CUP BRA**  
UK 32-38 B.C.D.DD.E  
EU 70-85 B.C.D.E.F



**A8 - MAGIC AIR**  
UK 32-36 A.B.C.D  
EU 70-80 A.B.C.D



**J10 - STRING**  
XS / S / M / L / XL

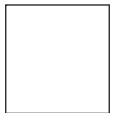


**J20 - BRIEF**  
XS / S / M / L / XL



**K10 - BOXER SHORTS**  
XS / S / M / L / XL

## SANS DÉTOUR



1000  
BLANC  
(Continuity)



2044  
NUDE  
(Continuity)



3000  
NOIR  
(Continuity)



**B1 - SOFT BRA**  
UK 30-36 A.B.C  
EU 65-80 A.B.C



**A0 - FULL-CUP BRA**  
UK 32-38 B.C.D.DD 32-36 E  
EU 70-85 B.C.D.E 70-80 F



**A8 - MAGIC AIR**  
UK 32-36 A 30-36 B.C.D.DD  
EU 70-80 A 65-80 B.C.D.E



**J10 - STRING**  
XS / S / M / L / XL



**J20 - BRIEF**  
XS / S / M / L / XL



**K10 - BOXER SHORTS**  
XS / S / M / L / XL

# SIZES WITHOUT SURPRISES

The right fit is everything when choosing lingerie. So to make sure you always have the key facts, this workbook features detailed sizing information, along with Japanese sizes and these handy international conversion tables.

| BAND SIZES   |    |    |    |    |     |
|--------------|----|----|----|----|-----|
| UK           | 30 | 32 | 34 | 36 | 38  |
| EUROPE       | 65 | 70 | 75 | 80 | 85  |
| FRANCE       | 80 | 85 | 90 | 95 | 100 |
| AUSTRALIA/NZ | 8  | 10 | 12 | 14 | 16  |
| USA          | 30 | 32 | 34 | 36 | 38  |
| JAPAN        | 65 | 70 | 75 | 80 | 85  |

| CUP SIZES    |   |   |   |   |    |     |
|--------------|---|---|---|---|----|-----|
| UK           | A | B | C | D | DD | E   |
| EUROPE       | A | B | C | D | E  | F   |
| FRANCE       | A | B | C | D | E  | F   |
| AUSTRALIA/NZ | A | B | C | D | DD | E   |
| USA          | A | B | C | D | DD | DDD |
| JAPAN        | B | C | D | E | F  | G   |

## A BRIEF EXPLANATION

Once you've found a gorgeous bra in just the right size, all you need are great-fitting briefs to complete your look. However, different sizes are described in different ways, depending on where you are in the world. Just check our size chart to make sure you're choosing briefs that give you the perfect fit every time.

|              |    |    |    |    |    |     |
|--------------|----|----|----|----|----|-----|
| UK           | XS | S  | M  | L  | XL | XXL |
| EUROPE       | 36 | 38 | 40 | 42 | 44 | 46  |
| FRANCE       | XS | S  | M  | L  | XL | XXL |
| AUSTRALIA/NZ | 8  | 10 | 12 | 14 | 16 | 18  |
| USA          | XS | S  | M  | L  | XL | XXL |
| JAPAN        | S  | M  | L  | LL | 3L | 4L  |

Brief sizes throughout this workbook are based on UK sizing.

Reproduction of this workbook, in part or whole, is strictly prohibited without prior written consent.  
Colour representation is the best that can be achieved via the conventional print process.  
All information is correct at the time of going to press.

**EVEDEN HUIT SAS**

21 RUE DU BIGNON, Z.I. SUD EST, CS 16320  
35063 RENNES CEDEX, FRANCE  
TEL. : +33 (0) 811 36 88 88

**UK, IRELAND & REST OF THE WORLD**

**WACOAL EMEA LTD.** THE CORSETRY FACTORY, ROTHWELL ROAD,  
DESBOROUGH, NORTHANTS, NN14 2PG, UK  
TEL: +44 (0) 1536 760282 FAX: +44 (0) 1536 762149  
EMAIL: ORDERS@WACOAL-EUROPE.COM

**WACOAL EUROPE SAS (PARIS)**

11 RUE DES GAZOMÈTRES 93218 SAINT DENIS LA PLAINE CEDEX, FRANCE  
TEL: +33 (0) 1 55 93 03 10

**WACOAL EUROPE SAS (LYON)**

4, ALLÉE DU MOULIN BERGER 69130 ECULLY, LYON, FRANCE  
TEL: +33 (0) 4 37 59 80 30 FAX: +33 (0) 4 72 17 53 14

**EVEDEN INC.**

65 SPRAGUE STREET, HYDE PARK, MA.02136  
TEL: 1 617 361 7559 FAX: 1 617 361 7527 USA TOLL FREE: 1 800 733 8964  
USA CUSTOMER SERVICE TOLL FREE: 1 800 467 1269 FAX: 1 866 533 1385  
EMAIL: USAORDERS@EVEDEN.COM

**EVEDEN CANADA**

ACCOUNTS OFFICE: 65 SPRAGUE STREET, HYDE PARK, MA.02136, USA  
TEL: 1 617 361 7559 FAX: 1 617 361 7527 CANADA TOLL FREE: 1 800 733 8964  
CANADA CUSTOMER SERVICE TOLL FREE: 1 800 467 1269 FAX: 1 866 533 1385  
EMAIL: CA.ORDER@EVEDEN.COM

**CARIBBEAN & LATIN AMERICA**

KO-ACH DISTRIBUTOR, INC. 3165 NE 207TH TERRACE, AVENTURA, FL.33180  
TEL: 1 305 409 9166 FAX: 1 309 401 7860  
EMAIL: JACKIE@KO-ACH.COM / LAZARO@KO-ACH.COM  
WEB: WWW.KO-ACH.COM

**WACOAL AUSTRALIA PTY LTD.**

SUITE 3/169 PASCOE VALE ROAD, MOONEE PONDS 3039  
TEL: +61 3 9326 0318 FAX: +61 3 9370 1074  
EMAIL: AUSTRALIA.ENQUIRIES@WACOAL-EUROPE.COM  
AUSTRALIAN.ORDER@WACOAL-EUROPE.COM

**NEW ZEALAND**

RICH PICKINGS: KATHLEEN RITCHIE  
TEL/FAX: 0064 9 411 9174  
EMAIL: MAIL@RICHPICKINGS.CO.NZ  
WEB: WWW.RICHPICKINGS.CO.NZ

[www.huit.com](http://www.huit.com)

 Wacoal

[wacoal-europe.com](http://wacoal-europe.com)

